

50HZ



Product Features

1. The UP(UB) is a complete, all-in-one booster pump set, consisted of duplex pumps, pressure tank, pipe, inverter panel, and baseplate.
2. Constant water pressure for all fixture outlets. Pressure setting is adjustable according to construction sites.
3. No water hammer, soft start/shut-off extend pump life.
4. Low noise and smooth operation. Inverter function, the system will change motor speed automatically, according to demand of capacity. It can save energy resources (electricity cost).
5. Appropriate diaphragm pressure tank size to match types of water pumps, quantities of inverter, and operation approach.
6. Dry-running shutdown protection for extending pump life.
7. Overhead water storage tank is not essential for UP(UB) pump system, easy to install, reduce the cost of maintenance.
8. Alternative and Parallel operations to reduce pump size and cheaper operating cost.

Applications

1. Auto boost water pressure for IC Manufacture industries, industrial pressure boosting systems.
2. Auto boost water pressure for hotels, apartments, factories, hospitals, schools, parks, gymnasiums, shopping malls, villas, railway stations, airports, military camps, expo center, buildings.

Operating Conditions

1. Ambient Temperature: 0~40°C.
2. Liquid Temperature: 0~60°C.
(If transfer liquid temperature is over 60°C, We strongly recommend the pump needs to be changed into heat-resistant mechanical seal and bearing).
3. Transfer clean or potable water or no corrosive chemicals liquids without abrasives.
4. Working pressure: Max. 5~20bar (Depending on pump types).

Pressure Tank Selections

Diaphragm pressure tanks

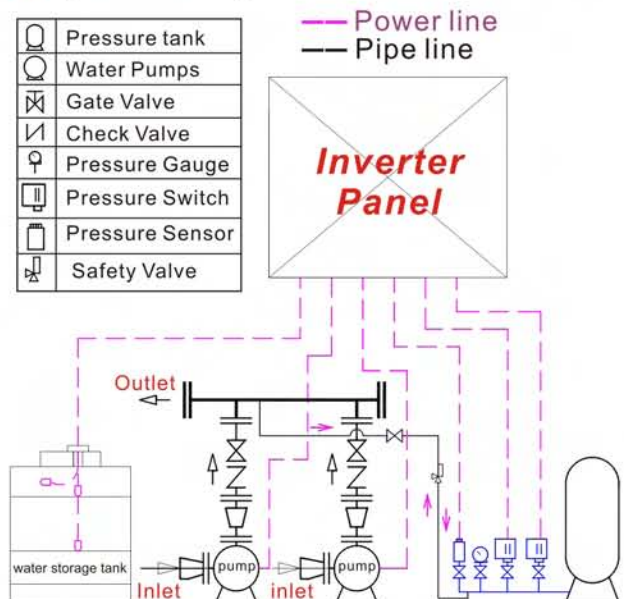
Vertical Type

Horizontal Type

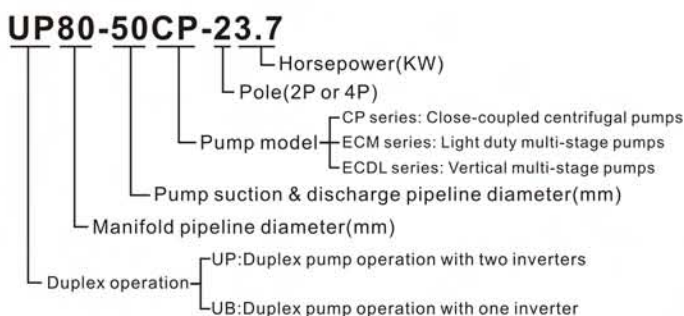
Standard shell material: SS400 (SUS304 is available upon request)
Working pressure: Max. 10kg/cm²
Volume: 8L~100L.
Joint: 3/4"~1".
Type: Horizontal, Vertical.



System Diagram



Model Code



▲ Duplex operation inverter control panel Introduction

Standard Panel

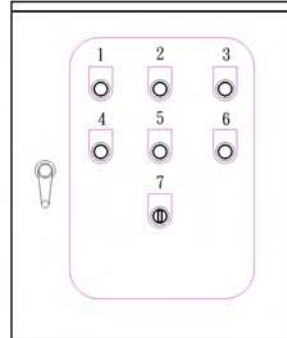
● Panel Outline



Standard Inverter pump panel



Dual gates Inverter pump panel



NO.	Name
1	No.1 running(Red)
2	Power(White)
3	No.2 running(Red)
4	No.1 failure(Yellow)
5	No.1 Auto/Stop/Man.
6	No. 2 failure
7	No.2 Auto/Stop/Man.

● Inside configuration



NO.	Name
1	Inverter
2	Fan
3	No fuse breaker
4	Fuse
5	Transformer
6	Double timer relay
7	Timer relay
8	Auxiliary relay
9	Terminal block
10	Ground wire base

Remarks:

- Standard type: Single gate, outdoor type panel. The panel casing is made of SS400.
- Stainless steel SUS304 panel casing, dual gates panel are available upon customer's request.
- Earth leakage circuit breaker, PID controller and PLC are optional upon request.



Human machine interface inverter Panel

● Panel outline



● Inside configuration



NO.	Name
1	Fan
2	Inverter
3	PLC
4	Terminal block
5	Auxiliary relay
6	Fuse
7	Magnetic switch
8	Switch
9	Ground wire base
10	Transformer
11	No fuse breaker
12	H.M.I.

- Remarks:
Standard type: Dual gates, outdoor type panel. The panel casing is made of SS400.
Stainless steel SUS304 panel casing is available upon request.

▲ Pump Selections

ECM-series Light duty Multi-stage Centrifugal Pump



Low operation noise, less power consumption, stainless steel pump construction, multi-stage impellers design, compact for saving space.
 Output(HP):0.5~4HP
 Frequency/Pole: 50HZ /2P
 Head(M): Max.73M
 Std. Capacity ranges: 2~24M³/hr
 Inverter pressure setting: 1.5~4.5 bar.
 Pump inlet/outlet: 1"~1.5"

CP-series Close-coupled Centrifugal Pump



Low operation noise, close-coupled design saves space and minimize fluctuation. Optimal performance and diverse pump material choice.
 Output(HP):0.5~20HP
 Frequency/Pole: 50HZ /2P
 Head(M): Max.59M
 Std. Capacity ranges: 5~84M³/hr
 Inverter pressure setting: 1.0~5.0 bar.
 Pump inlet/outlet: 1"~3"

ECDL-series Vertical Multi-stage Centrifugal Pump



Low operation noise, vertical design is for space saving and easy maintenance. Main pump components and impellers are made of stainless steel SUS304.
 Output(HP):0.5~20HP
 Frequency/Pole: 50HZ /2P
 Head(M): Max.130M
 Std. Capacity ranges: 2~64M³/hr
 Inverter pressure setting: 2.0~9.0 bar.
 Pump inlet/outlet: 1 1/4"~3"

CPS-series Stainless Steel Close-coupled Centrifugal Pump

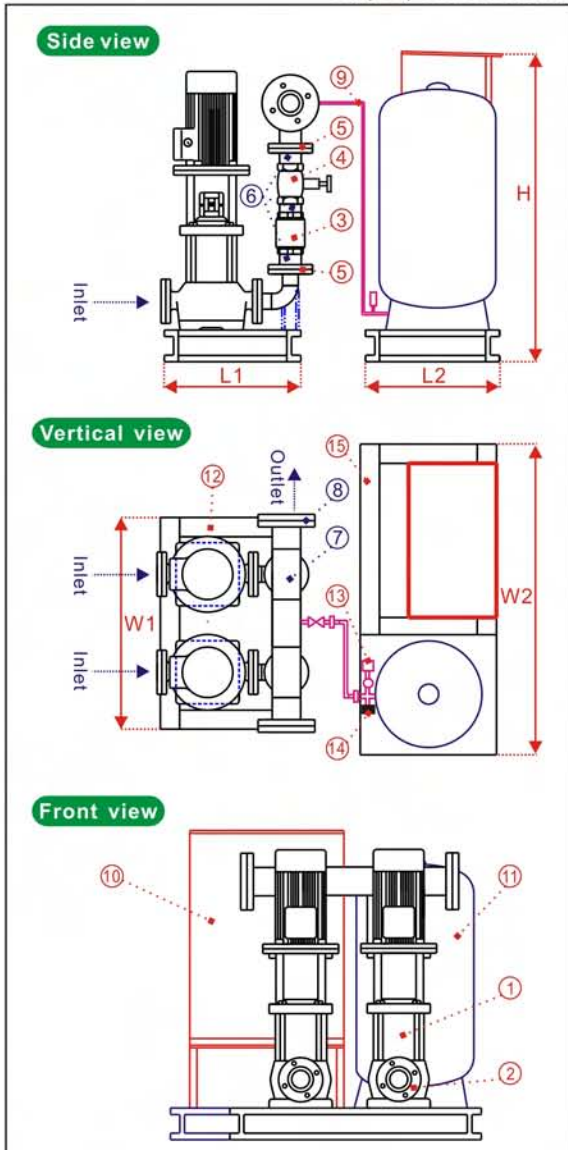


Low operation noise, close-coupled design is for space saving and minimizes fluctuation. Pump construction and impeller are made of stainless steel SUS304 or SUS316.
 Output(HP):0.5~20HP
 Frequency/Pole: 50HZ /2P
 Head(M): Max.58M
 Std. Capacity ranges: 5~84M³/hr
 Inverter pressure setting: 1.0~5.0 bar.
 Pump inlet/outlet: 1"~3"

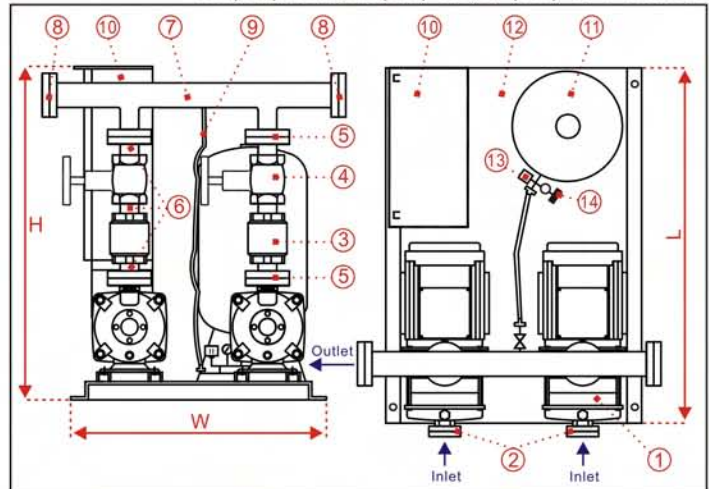
● Special pump type, above 20HP motor specification and performance data are available upon request.

▲ Construction

UP(UB)-ECDL SERIES



UP(UB)-ECM;UP(UB)-CP;UP(UB)-CPS SERIES



NO.	Name	Std. Material	Sub. Material
1	main pumps	ECDL: SUS304 ECM: SUS304	CP: FC200 CPS: SUS304
2	inlet flanges	SS400	SUS304
3	check valve	BC	SUS304
4	gate valve	BC	SUS304
5	outlet flanges	SS400	SUS304
6	outlet pipe	SS400	SUS304
7	manifold pipe	SS400	SUS304
8	manifold flanges	SS400	SUS304
9	high pressure hose	Rubber	SUS304
10	control panel	SS400	SUS304
11	pressure tank	SS400	SUS304
12	baseplate	SS400	SUS304
13	pressure switch	-----	-----
14	pressure transmitter	SUS304	-----
15	baseplate for panel	SS400	SUS304

50HZ



Product Features

1. The UP(UB) is a complete, all-in-one booster pump set, consisted of duplex pumps, pressure tank, pipe, inverter panel, and baseplate.
2. Constant water pressure for all fixture outlets. Pressure setting is adjustable according to construction sites.
3. No water hammer, soft start/shut-off extend pump life.
4. Low noise and smooth operation. Inverter function, the system will change motor speed automatically, according to demand of capacity. It can save energy resources (electricity cost).
5. Appropriate diaphragm pressure tank size to match types of water pumps, quantities of inverter, and operation approach.
6. Dry-running shutdown protection for extending pump life.
7. Overhead water storage tank is not essential for UP(UB) pump system, easy to install, reduce the cost of maintenance.
8. Alternative and Parallel operations to reduce pump size and cheaper operating cost.

Applications

1. Auto boost water pressure for IC Manufacture industries, industrial pressure boosting systems.
2. Auto boost water pressure for hotels, apartments, factories, hospitals, schools, parks, gymnasiums, shopping malls, villas, railway stations, airports, military camps, expo center, buildings.

Operating Conditions

1. Ambient Temperature: 0~40°C.
2. Liquid Temperature: 0~60°C.
(If transfer liquid temperature is over 60°C, We strongly recommend the pump needs to be changed into heat-resistant mechanical seal and bearing).
3. Transfer clean or potable water or no corrosive chemicals liquids without abrasives.
4. Working pressure: Max. 5~20bar (Depending on pump types).

Pressure Tank Selections

Diaphragm pressure tanks

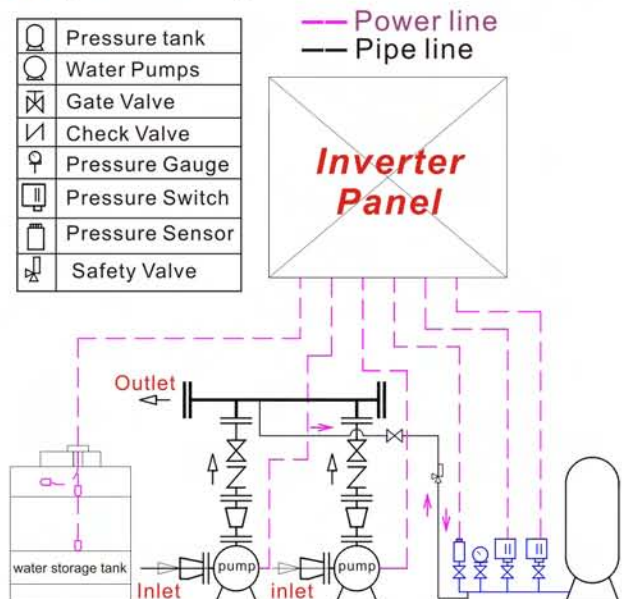
Vertical Type

Horizontal Type

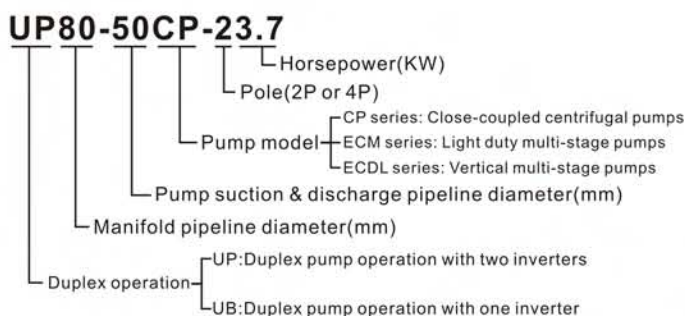
Standard shell material: SS400 (SUS304 is available upon request)
Working pressure: Max. 10kg/cm²
Volume: 8L~100L.
Joint: 3/4"~1".
Type: Horizontal, Vertical.



System Diagram



Model Code



▲ Duplex operation inverter control panel Introduction

Standard Panel

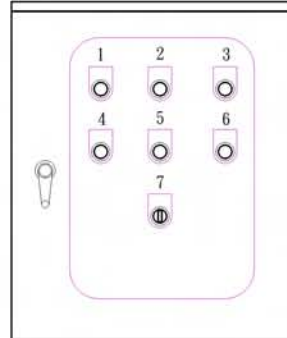
● Panel Outline



Standard Inverter pump panel



Dual gates Inverter pump panel



NO.	Name
1	No.1 running(Red)
2	Power(White)
3	No.2 running(Red)
4	No.1 failure(Yellow)
5	No.1 Auto/Stop/Man.
6	No. 2 failure
7	No.2 Auto/Stop/Man.

● Inside configuration



NO.	Name
1	Inverter
2	Fan
3	No fuse breaker
4	Fuse
5	Transformer
6	Double timer relay
7	Timer relay
8	Auxiliary relay
9	Terminal block
10	Ground wire base

Remarks:

- Standard type: Single gate, outdoor type panel. The panel casing is made of SS400.
- Stainless steel SUS304 panel casing, dual gates panel are available upon customer's request.
- Earth leakage circuit breaker, PID controller and PLC are optional upon request.



Human machine interface inverter Panel

● Panel outline



● Inside configuration



NO.	Name
1	Fan
2	Inverter
3	PLC
4	Terminal block
5	Auxiliary relay
6	Fuse
7	Magnetic switch
8	Switch
9	Ground wire base
10	Transformer
11	No fuse breaker
12	H.M.I.

● Remarks:

Standard type: Dual gates, outdoor type panel. The panel casing is made of SS400. Stainless steel SUS304 panel casing is available upon request.

▲ Pump Selections

ECM-series Light duty Multi-stage Centrifugal Pump



Low operation noise, less power consumption, stainless steel pump construction, multi-stage impellers design, compact for saving space.
Output(HP):0.5~4HP
Frequency/Pole: 50HZ /2P
Head(M): Max.73M
Std. Capacity ranges: 2~24M³/hr
Inverter pressure setting: 1.5~4.5 bar.
Pump inlet/outlet: 1"~1.5"

CP-series Close-coupled Centrifugal Pump



Low operation noise, close-coupled design saves space and minimize fluctuation. Optimal performance and diverse pump material choice.
Output(HP):0.5~20HP
Frequency/Pole: 50HZ /2P
Head(M): Max.59M
Std. Capacity ranges: 5~84M³/hr
Inverter pressure setting: 1.0~5.0 bar.
Pump inlet/outlet: 1"~3"

ECDL-series Vertical Multi-stage Centrifugal Pump



Low operation noise, vertical design is for space saving and easy maintenance. Main pump components and impellers are made of stainless steel SUS304.
Output(HP):0.5~20HP
Frequency/Pole: 50HZ /2P
Head(M): Max.130M
Std. Capacity ranges: 2~64M³/hr
Inverter pressure setting: 2.0~9.0 bar.
Pump inlet/outlet: 1 1/4"~3"

CPS-series Stainless Steel Close-coupled Centrifugal Pump

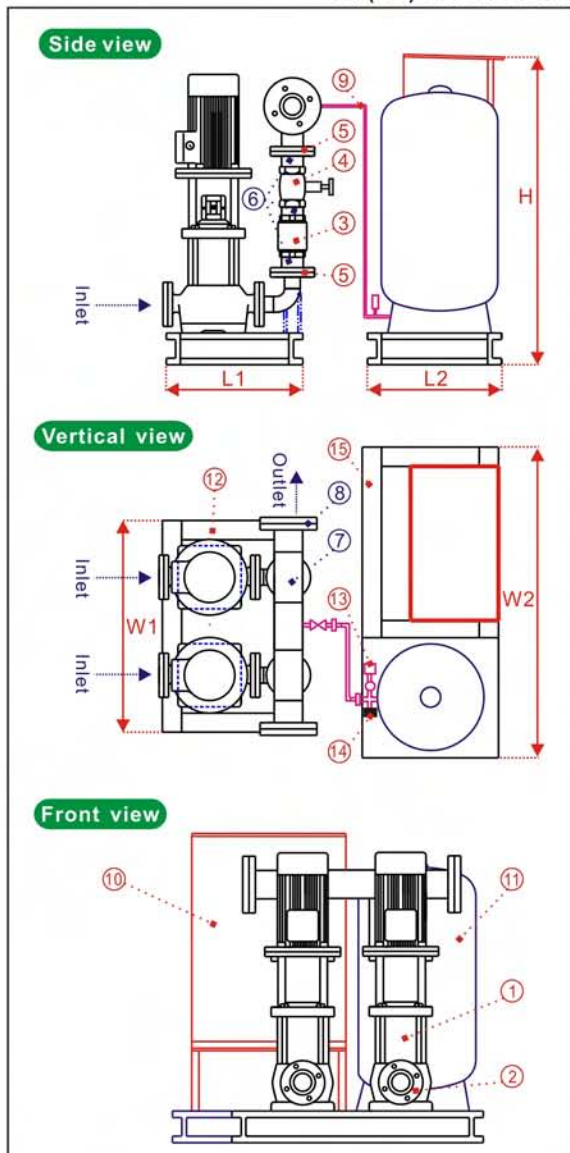


Low operation noise, close-coupled design is for space saving and minimizes fluctuation. Pump construction and impeller are made of stainless steel SUS304 or SUS316.
Output(HP):0.5~20HP
Frequency/Pole: 50HZ /2P
Head(M): Max.58M
Std. Capacity ranges: 5~84M³/hr
Inverter pressure setting: 1.0~5.0 bar.
Pump inlet/outlet: 1"~3"

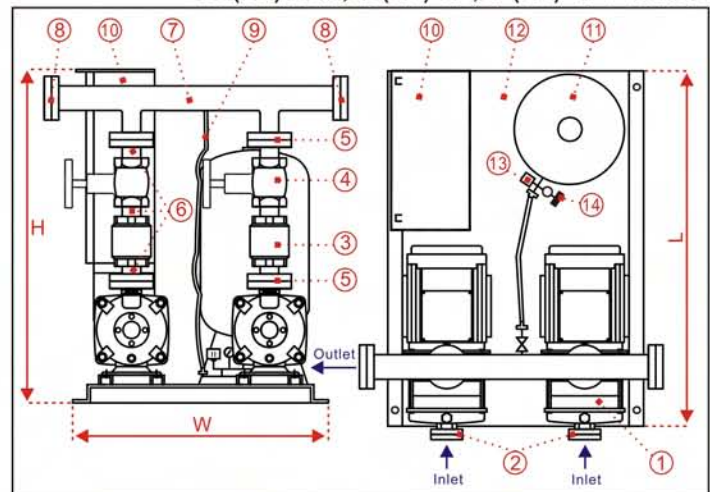
● Special pump type, above 20HP motor specification and performance data are available upon request.

▲ Construction

UP(UB)-ECDL SERIES



UP(UB)-ECM;UP(UB)-CP;UP(UB)-CPS SERIES



NO.	Name	Std. Material	Sub. Material
1	main pumps	ECDL: SUS304 ECM: SUS304	CP: FC200 CPS: SUS304
2	inlet flanges	SS400	SUS304
3	check valve	BC	SUS304
4	gate valve	BC	SUS304
5	outlet flanges	SS400	SUS304
6	outlet pipe	SS400	SUS304
7	manifold pipe	SS400	SUS304
8	manifold flanges	SS400	SUS304
9	high pressure hose	Rubber	SUS304
10	control panel	SS400	SUS304
11	pressure tank	SS400	SUS304
12	baseplate	SS400	SUS304
13	pressure switch	-----	-----
14	pressure transmitter	SUS304	-----
15	baseplate for panel	SS400	SUS304