

Operate **EVERGUSH** Fire-fighting pump

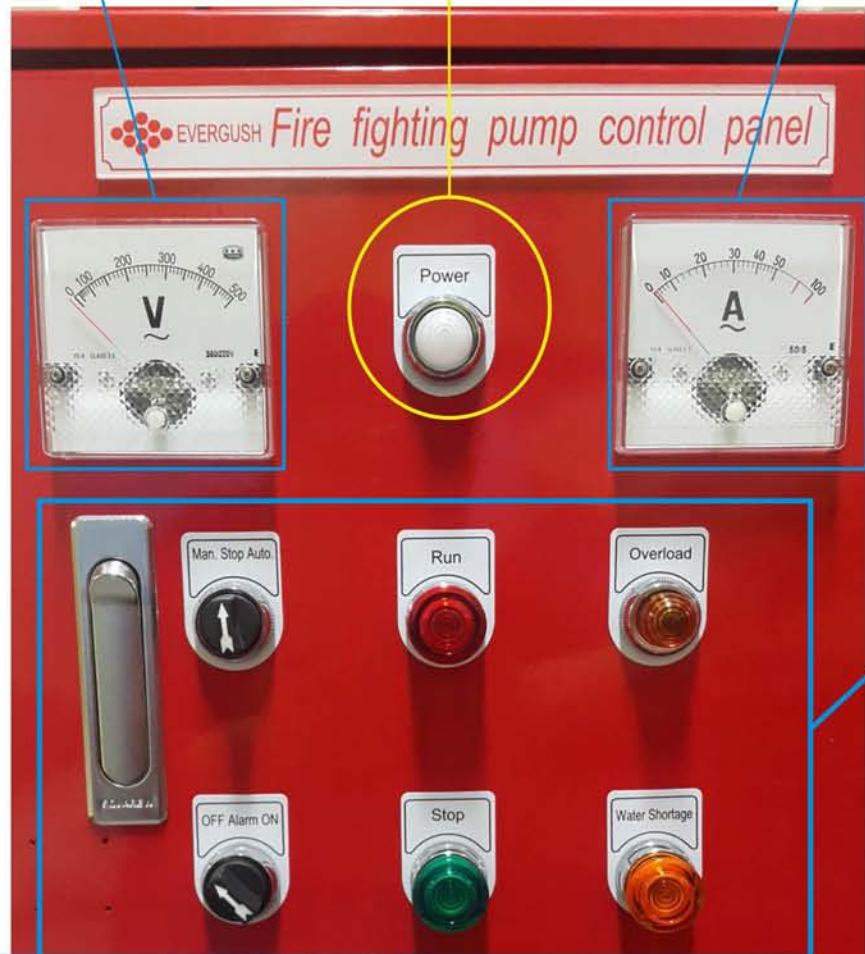


Control Panel Outside Layout illustration

Voltmeter

When open power,
power lamp light up

Ammeter



Nameplate

Buzzer

Manu. Stop Auto

Turn Arrow to Auto Operation or Stop Running or Manual Operation

Run

When manual operation, press **Red Run** button, to run the pump.

Overload

When overload occurs, the orange Overload lamp will light up, the buzzer will ring.



OFF Alarm On

Always Turn Arrow to "On", when overload or water shortage occurs, buzzer will ring.

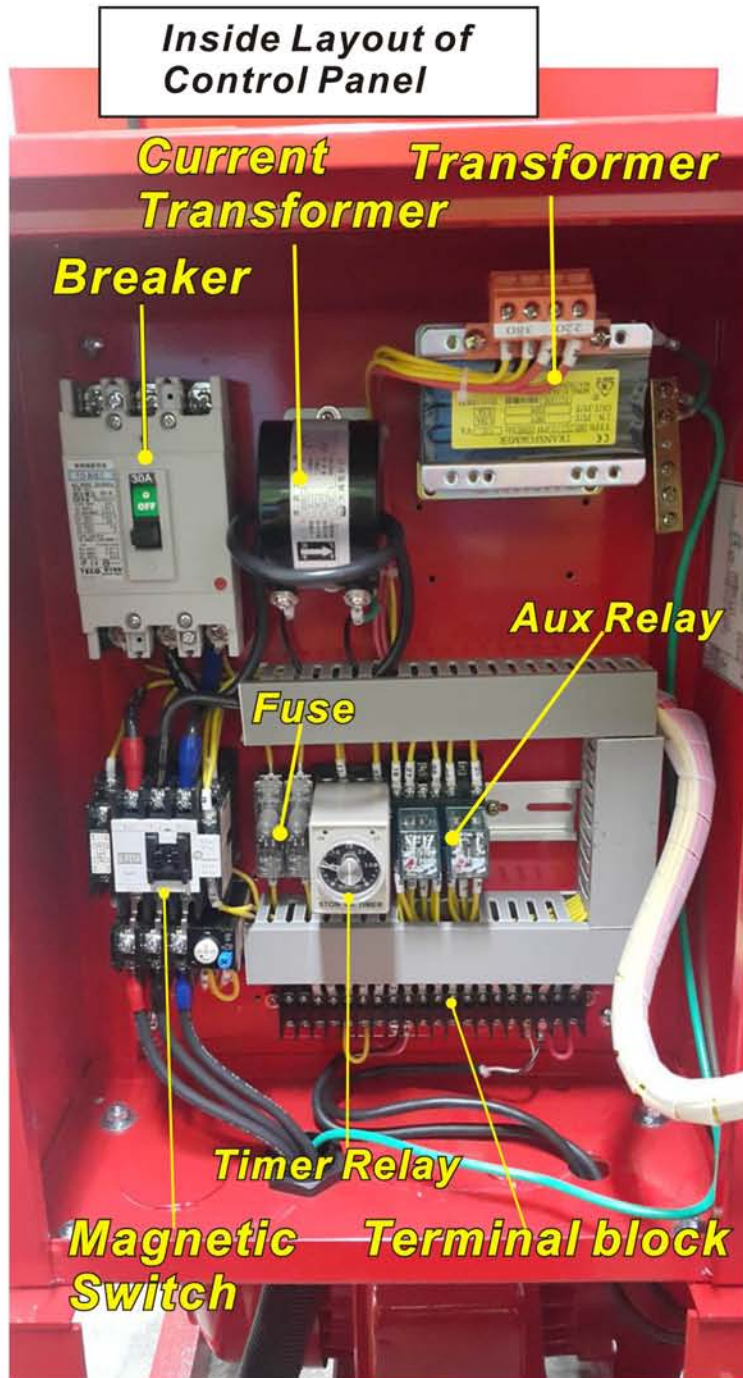
Stop

When manual operation, press **Green Stop** button, to stop the pump.

Overload

When water shortage in storage tank occurs, the orange overload lamp will light up, the buzzer will ring.

Control Panel Inside Layout illustration



Main Power 1. Connect with main power



2. Turn Arrow to Manual Operation



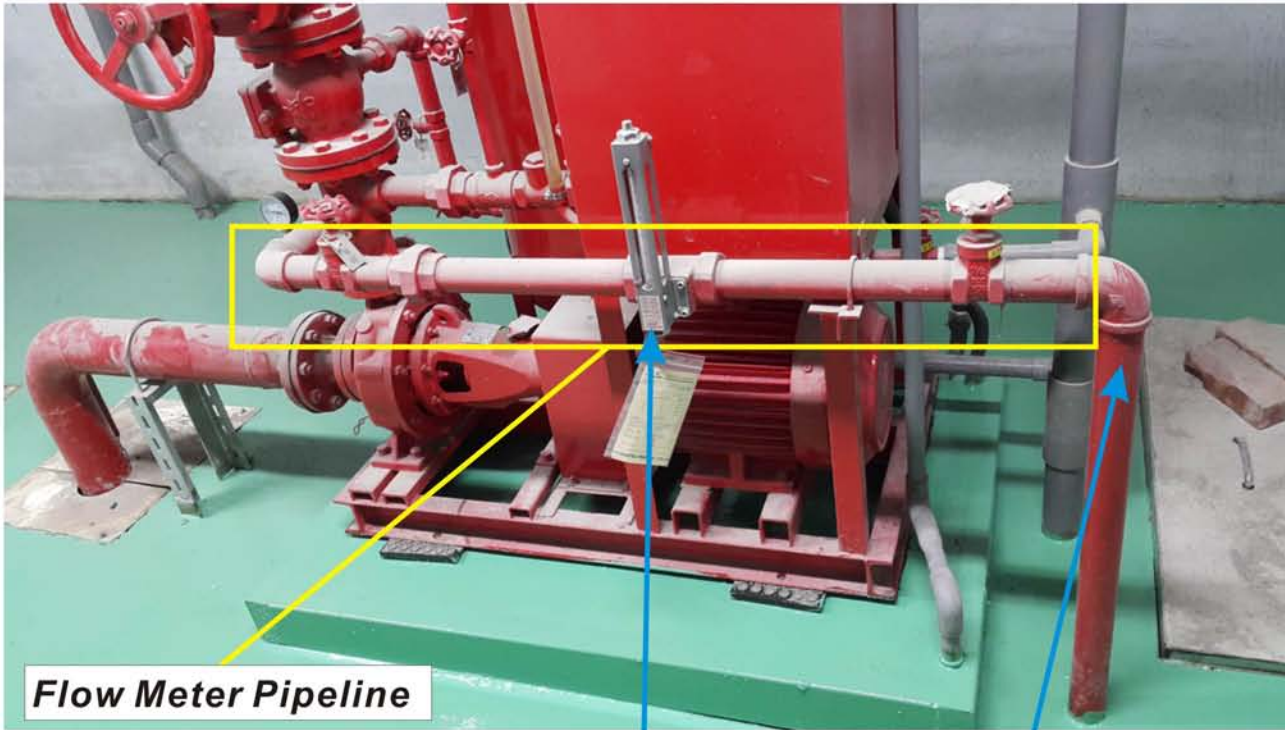
3. Push Run button



4. To see if fan rotate correct



If you find fan (shaft) rotation is not correct, please change 2 between 3 wires of main power until rotation is correct.

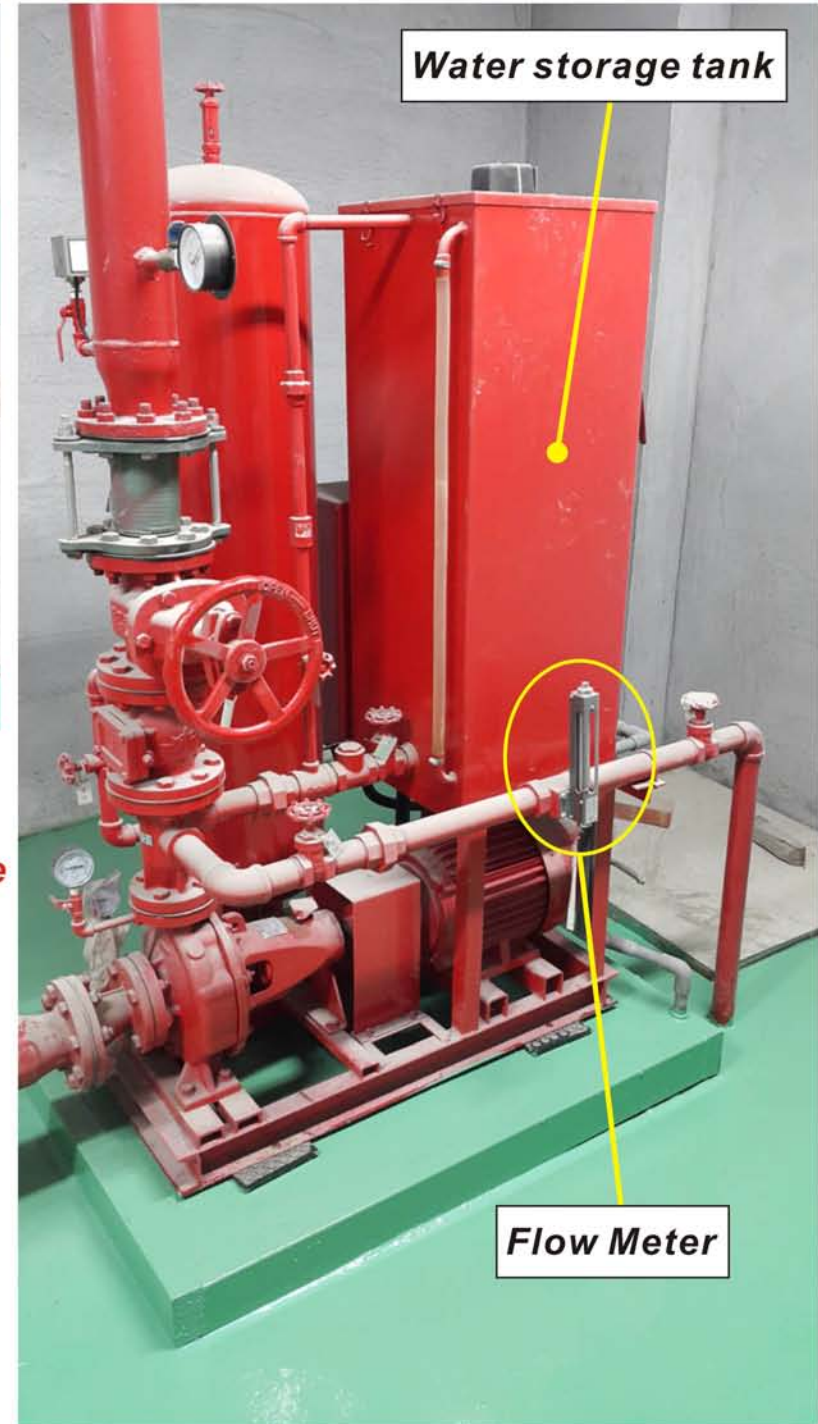


Flow Meter Pipeline

Installed Flow Meter



Installed discharge pipe on Flow Meter pipeline, to drain water when testing flow

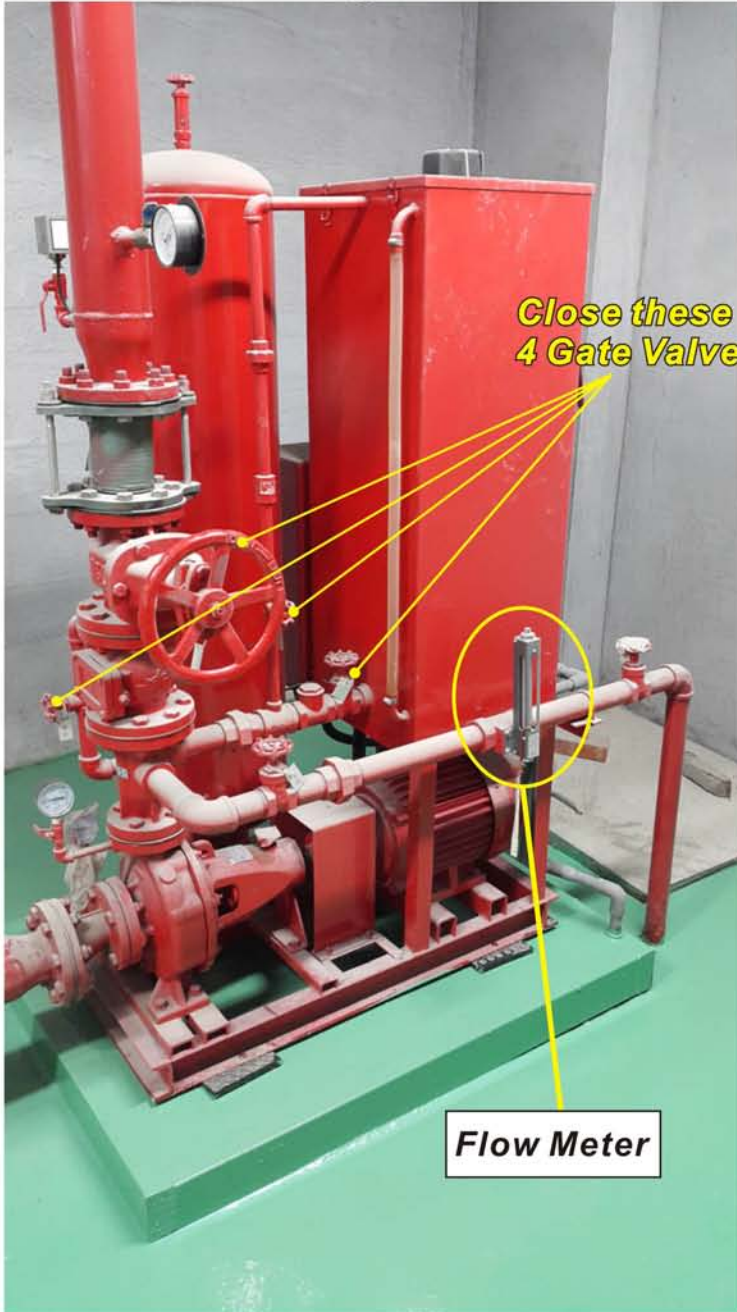


Water storage tank

Flow Meter

Testing flow meter

1. Close gate valves



2. Turn Arrow to Manual Operation

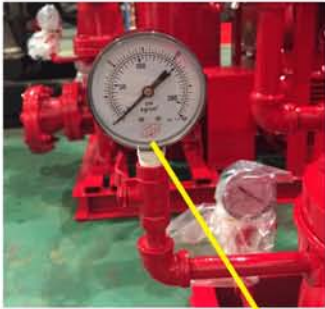


3. Push Run button



4. Open gate valve on flow meter pipeline

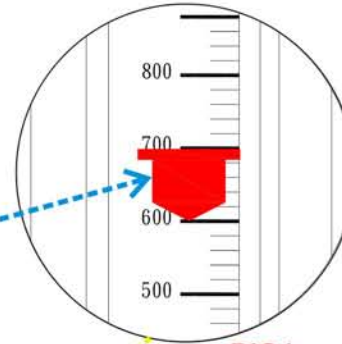




Once the scale in flow meter reach required capacity, check pressure value on pressure gauge if required pressure is matched.

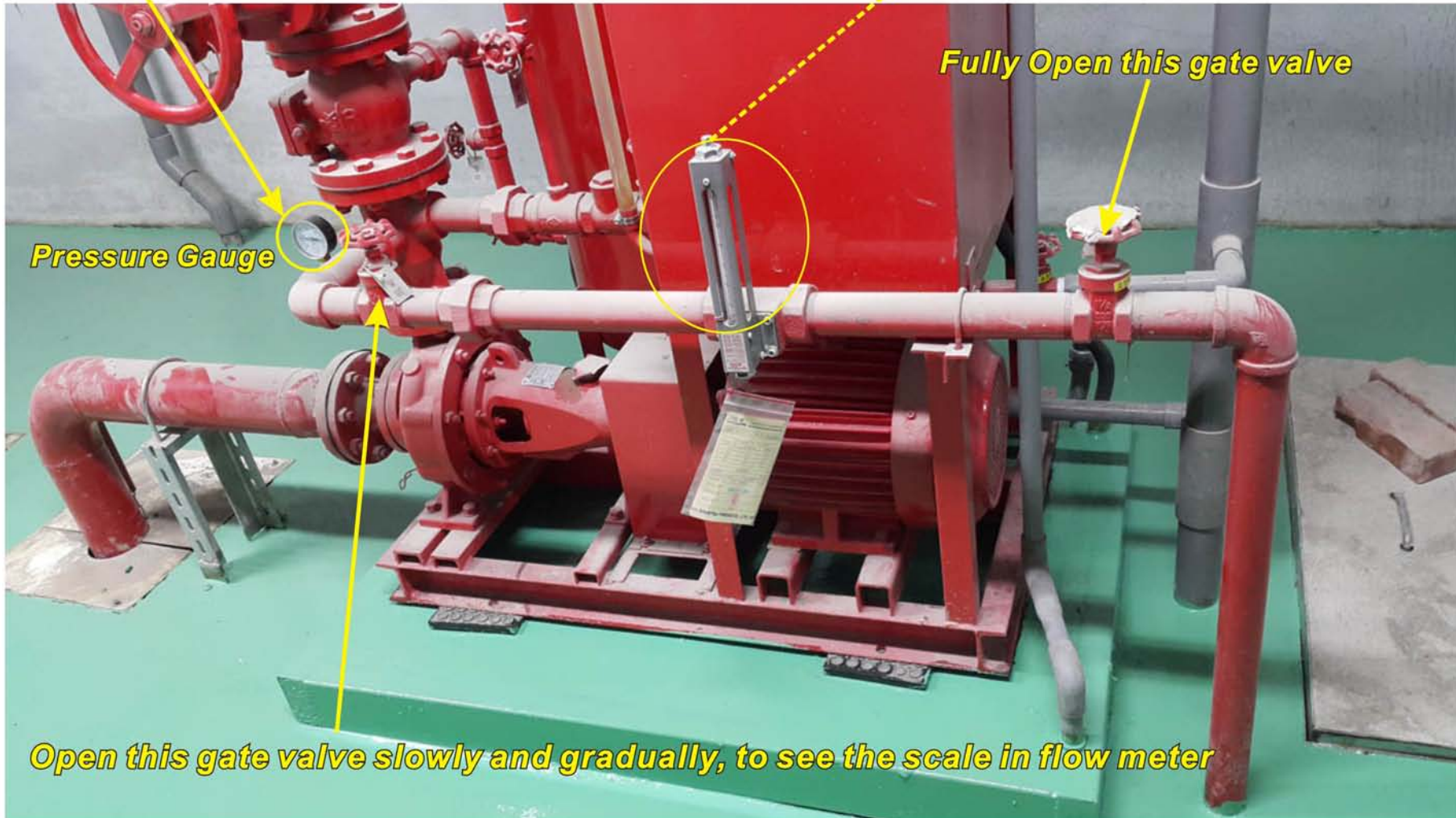


Flowmeter



PIC1

Look at the scale, the upper part is the water volume (capacity) of measurement. PIC1- It means 700L/min



Pressure Gauge

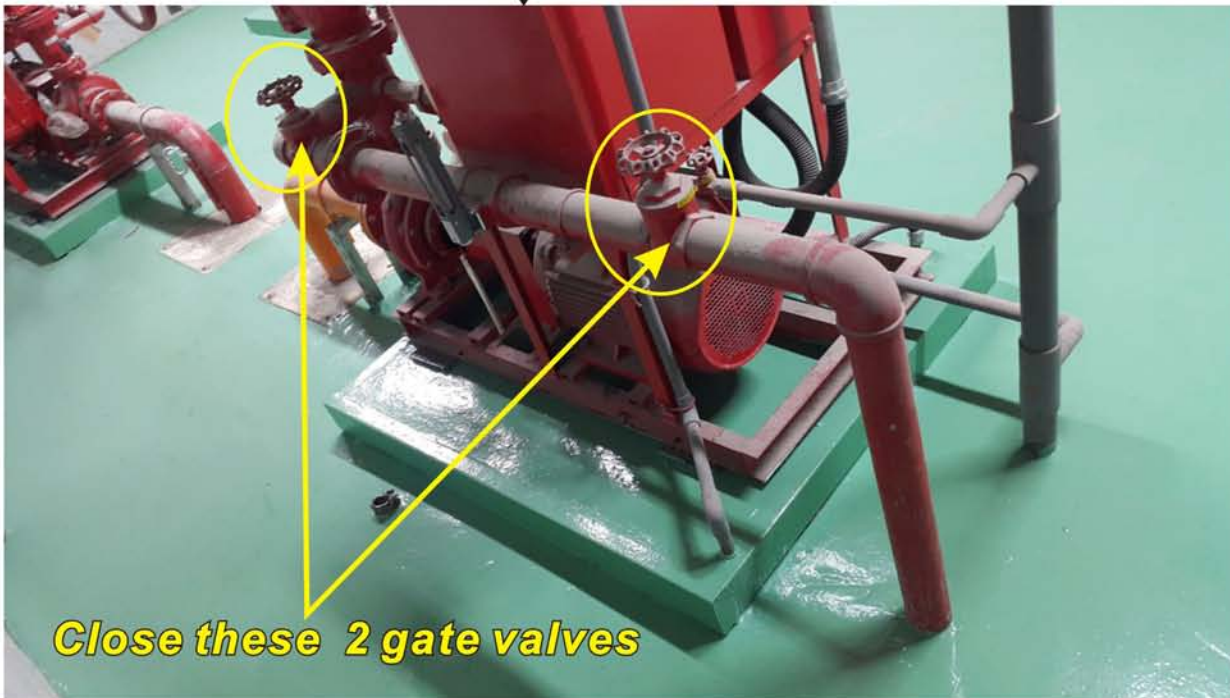
Fully Open this gate valve

Open this gate valve slowly and gradually, to see the scale in flow meter

After testing flow meter.

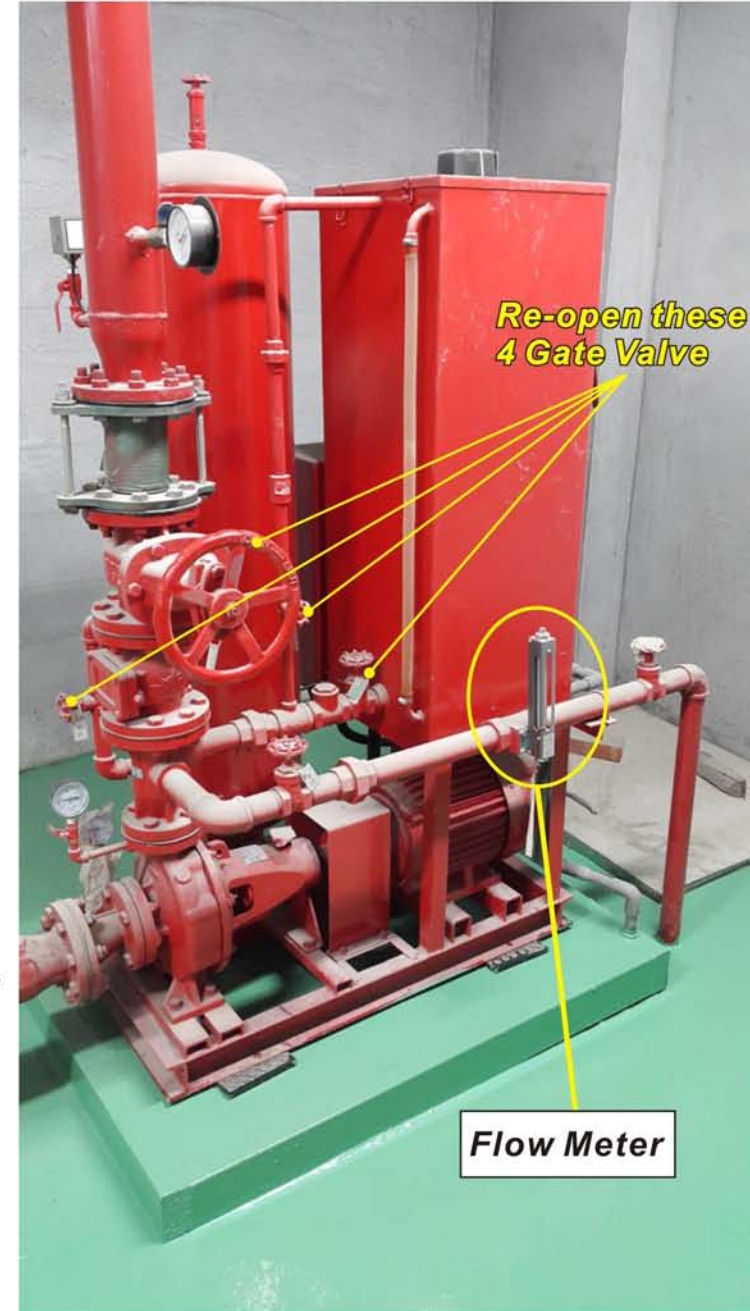


After finishing flow testing, Please push "Stop" button on control panel, to stop running the pump.



Close these 2 gate valves

Re-open gate valves



Re-open these 4 Gate Valve

Flow Meter

How to test if fire pump system can operate automatically.

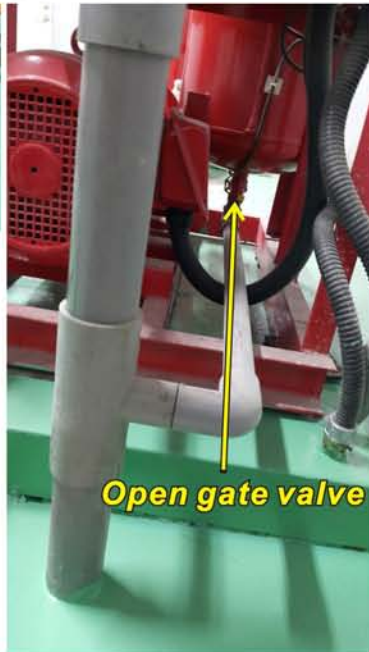
1. Turn Arrow to Auto Operation



2. Open the gate valve in the bottom of pressure tank



Open the gate valve in the bottom of pressure tank, to release pressure inside tank.



3. The pump will auto-run, to fill water pressure in tank

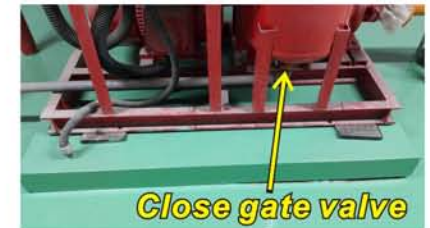


4. Then push Stop button



Please push "Stop" button on control panel, to stop running the pump.

5. Then close the gate valve



Important Notes

1. Always keep Arrow in “Auto” position, unless you are testing flow meter. Please turn arrow to “Manual” when testing flow meter.

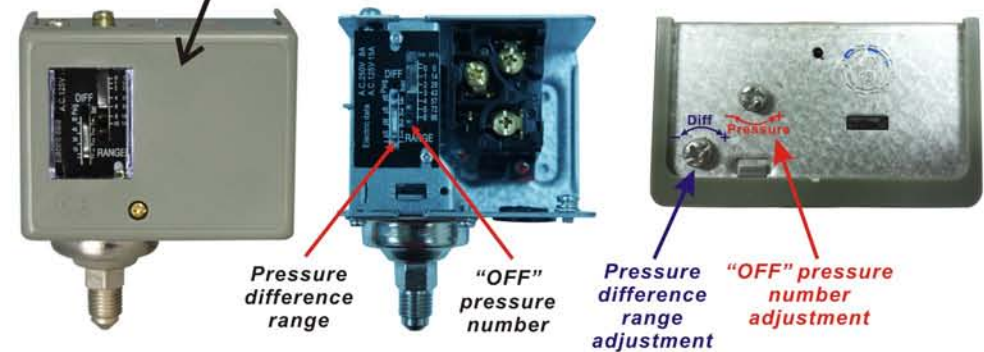


2. According to Taiwan laws, when fire occurs, the fire pump will auto-start running, it won't STOP even fire hydrant or sprinkler are closed. Unless user press “Stop” button in panel, otherwise the fire pump will keep boosting water pressure.



Push “Stop”

3. Pressure switch adjustment. Please don't adjust pressure switch at random. Pressure switch adjustment must be made by professionals.



For example:
If "OFF" pressure is 5bar, Pressure difference is 1bar.
It means pump system ON: 4bar, OFF:5bar