



Main Functions

- Let water continue flowing in the wastewater pool(tank), to avoid becoming a stagnant pool.
- To avoid too much solid particles or dirt precipitation. The propeller of the mixer rotates continuously to achieve the effect of stirring and dispersing the waste water and prevent solid particles from settling under the tank.

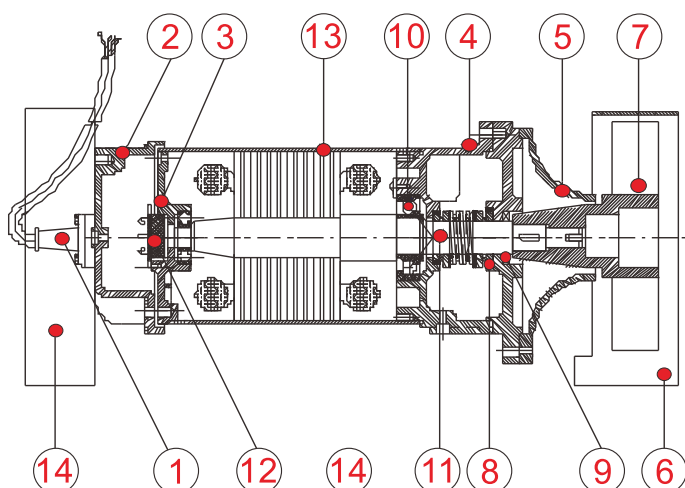
Applications

- Wastewater treatment of all industries.
- River, ponds, lakes dredging.
- Artificial flow of amusement facilities.
- Mix and agitate impurities in waste water.

Motor Spec.

- Voltage: Only Three phase.
- Frequency: 50Hz.
- Enclosed class: IP68.
- Insulation: F.
- Pole: 4P.
- Dry type motor with built-in overload protector.

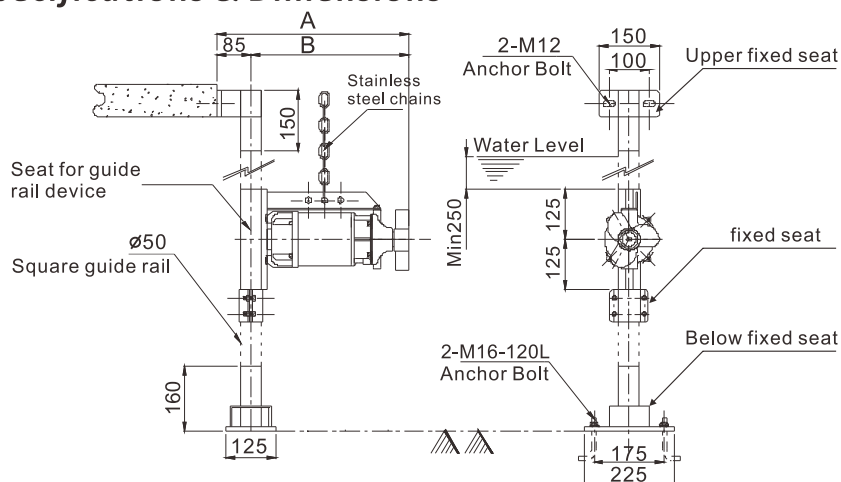
Section View & Materials



NO.	NAME	EFM MTRL	EFMS MTRL
1	Cable	UL_STOW	UL_STOW
2	Motor upper cover	FC200	SUS316
3	Bearing housing	FC200	SUS316
4	Bracket	FC200	SUS316
5	Inlet housing	FC200	SUS316
6	Jet Ring	SUS304	SUS304
7	Mixer impeller(propeller)	FCD450	SUS316
8	Mechanical seal	SIC/SIC	SIC/SIC
9	Oil seal	NBR	VITON
10	Bearing(NTN)	*****	*****
11	Shaft	SUS410	SUS316
12	Overload protector(T.I.)	*****	*****
13	Motor housing	SUS304	SUS316
14	Seat for guide rail device	SUS304	SUS304

●The original EFM cast iron impeller can be replaced with SUS316 material upon special request.

Specifications & Dimensions



For easy maintenance and safety

OPTIONAL



Model	Model	Output		Pole	Capacity	Flow Speed	Dimensions(mm)		N.Weight
		KW	HP				A	B	
EFM-05T	EFMS-05T	0.37	0.5	4	108	1.78	480	395	16
EFM-10T	EFMS-10T	0.75	1	4	192	2.02	510	425	18
EFM-20T	EFMS-20T	1.50	2	4	270	2.50	632	567	40
EFM-30T	EFMS-30T	2.20	3	4	408	3.50	652	587	43

● Ambient temperature: Max.40°C. ● Liquid temperature: 0~40°C.