

EFK-series

Submersible Cutter Pump



EVERGUSH®

50Hz



0.5~1HP



2~3HP



5~7.5HP



10~15HP

Features

- The non-clogging impeller with tungsten cutter can cut off solid objects and prevent the impeller from being stuck by hard objects.
- Dry motor with overload protector; Cable with an epoxy resin sealed water-proof cable hood; Use deep groove C3 bearing to extend life time.
- Superior abrasion resistant double mechanical seal to ensure best seal effect.
- Oil seal mounted outside of seal chamber stops solids gathering around seal faces.

Motor Spec.

- 2P dry or oil type motor.
- Insulation: F class.
- Protection: IP68.
- Frequency: 50Hz.
- Voltage: 1 ϕ 220~240V(0.5~2HP).
3 ϕ 220~440V(all models).

Tungsten Cutter



Non-clogging impeller with Tungsten Cutter

Applications

- Discharge wastewater containing kitchen waste, food, excrement, branches, leaves, tampons, etc.
- It is used for drainage of sewage and accumulated water in apartments, hotels, restaurants, malls, schools, airports, stadiums and other places.
- Fishery, animal husbandry, stock farm, piggery, fecal sewage tank in wastewater treatment plant.

Optional

Sub. Cutter pump with guide rail device (All EFK models)



Optional

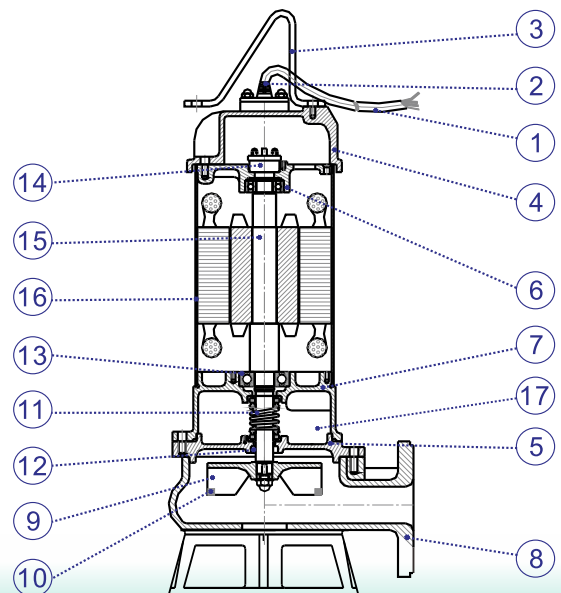
Single phase sub. cutter pump with float switch. (0.5~2HP/1 Phase)



Parts and Materials List

No.	Parts	Std. Material
		EFK Model
1	Cable	UL_STOW or VCT
2	Cable hood	PVC
3	Handle	Nylon6 or SS400
4	Motor cover	Nylon66 or FC200
5	Seal housing	FC200
6	Bracket	FC200
7	Oil chamber	FC200
8	Pump casing	FC200
9	Impeller	FCD450
10	Cutter edge	Tungsten
11	Mech. seal	CA/CE
12	Oil seal	NBR
13	Bearing	(NTN brand)
14	Overload protector	(T.I.brand)
15	Shaft	SUS410
16	Motor housing	SUS304
17	Lubricant oil	(Turbine Oil ISO VG46)

• Mech.seal (sic/sic)material is optional upon request.



Operating Conditions

- Liquid temperature: 0~40°C.
- Ambient temperature: Max.40°C.
- Solid passage: Max.22~40mm.
- Don't use in seawater and highly corrosive liquids.
- 24-hour continuous operation is not allowed.
- No drain wastewater containing stones, diapers, latex gloves, hemp ropes, sanitary napkins, etc.

Model Code

EFK-20 A T

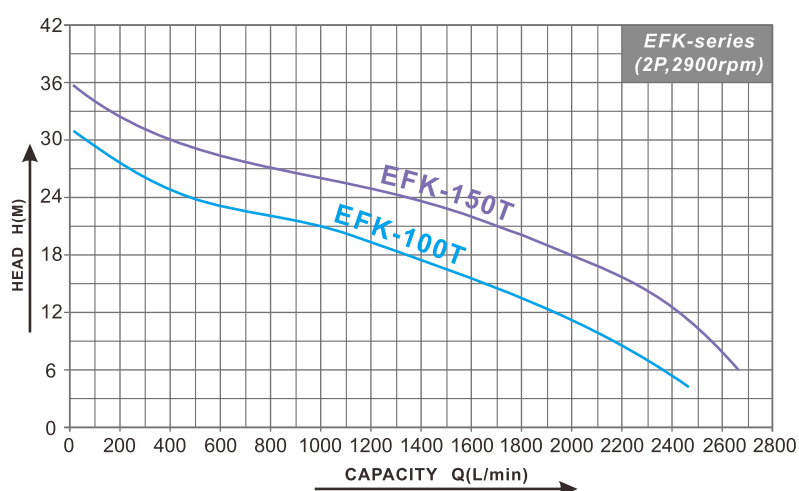
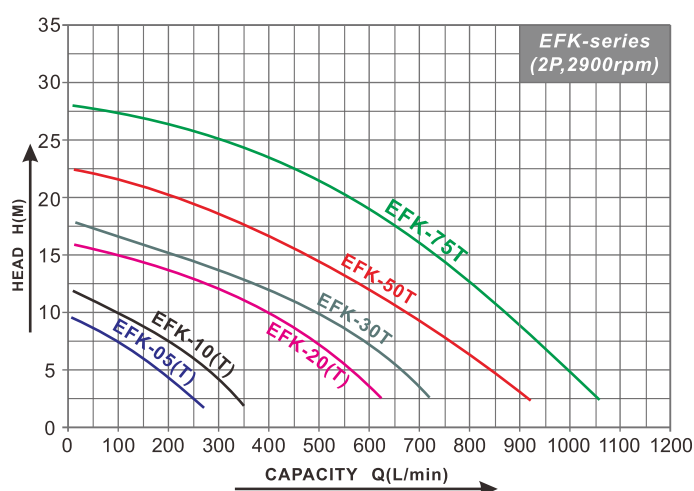
Model name of submersible cutter pump

HP: Number/10

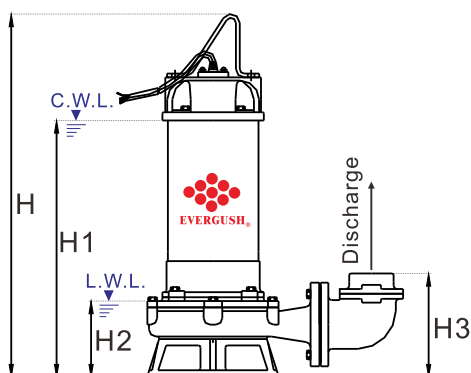
Equipped with float switch

Three Phase Motor

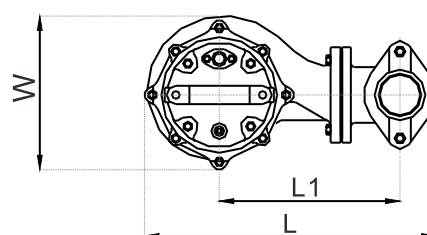
Performance Curves



Specifications & Dimensions



NOTE: Forbid running submersible pumps continuously under L.W.L.



C.W.L.: Continuously Running Water Level.
L.W.L.: Lowest Running Water Level.

Model	Power		Disch.	Phase	Rated		Max.		Dimensions (mm)							Cable	Net Weight	Solid Passage
	KW	HP			Head	Capacity	Head	Cap.	L	L1	W	H	H1	H2	H3			
EFK-05(A)(T)	0.37	0.5	2"	1,3	5~6	180~150	9.5	300	222	115	145	361	248	64	84	5	13	22
EFK-10(A)(T)	0.75	1	2"	1,3	6~7.5	250~200	12	400	222	115	149	416	292	64	84	5	18	22
EFK-20(A)(T)	1.5	2	2"or 3"	1,3	9~10	400~350	15	650	403	250	212	541	393	115	169	5	33	22
EFK-30T	2.2	3	2"or 3"	3	11~12	450~400	18	750	403	250	212	561	413	115	169	5	35	22
EFK-50T	3.7	5	3"or 4"	3	15~17	600~520	25.5	1000	463	260	227	610	445	138	220	5	55	28
EFK-75T	5.5	7.5	3"or 4"	3	16~19	700~600	28	1050	463	260	227	650	485	138	220	5	61	28
EFK-100T	7.5	10	4"	3	15~20	1650~1120	31	2450	560	310	310	700	550	250	310	10	105	40
EFK-150T	11	15	4"	3	20~24	1800~1350	36	2700	560	310	310	730	580	250	310	10	115	40

Remarks: ● (A): Equipped with float switch. ● (T): Three phase motor. ● Specific cable lengths are available upon request.

50Hz

TOS-EFK

EFK Sub. Cutter Pump with Guide Rail Device

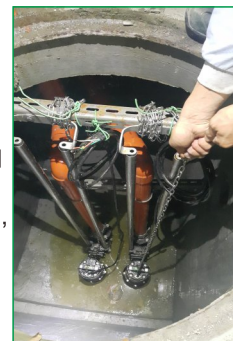

EVERGUSH®

Product Features

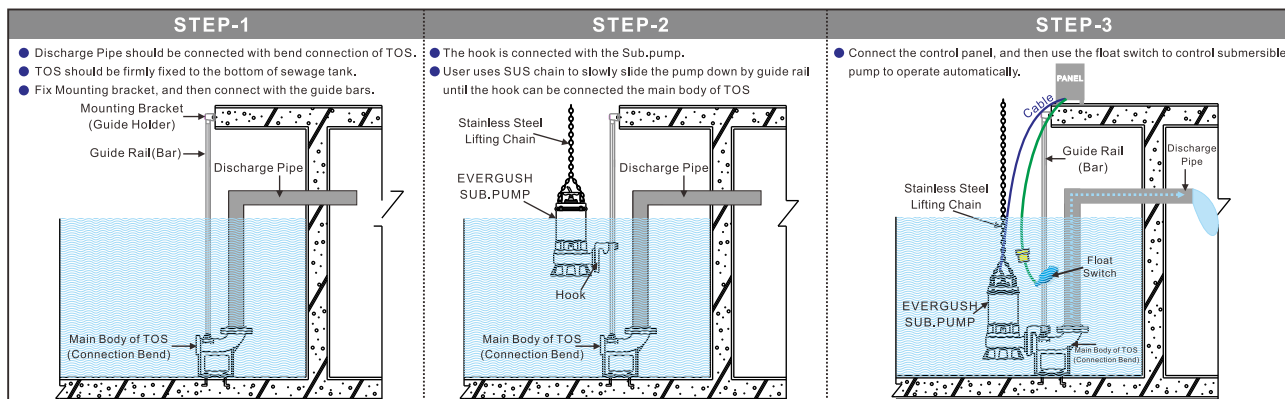
- Through simple and convenient install, we can connect the pump onto guide rail device. Whenever the pump needs maintenance, it can be easily pulled out through guide bar to dismantle, repair or examine the pump. For Safety purpose and to avoid biogas poisoning, the worker no longer needs to go down the septic tank for maintenance.

Applications

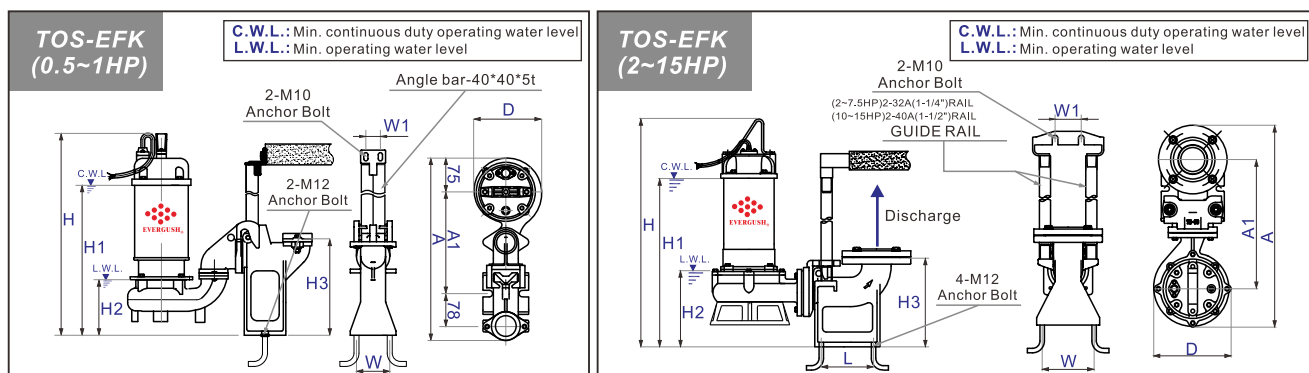
- Discharge wastewater containing kitchen waste, food, excrement, branches, leaves, tampons, etc. It is used for drainage of sewage and accumulated water in apartments, hotels, restaurants, malls, schools, airports, stadiums, etc. Fishery, animal husbandry, stock farm, piggery, fecal sewage tank in wastewater treatment plant.



Installation Diagram



Dimensions



Model	Power	Disch.	Dimensions(mm)										Net Weight (kg)
	HP	Inch	A	A1	D	H	H1	H2	H3	L	W	W1	
TOS-EFK-05(T)	0.5	2"	425	240	150	422	307	150	225	---	80	35	19
TOS-EFK-10(T)	1	2"	425	240	150	502	377	150	225	---	80	35	24
TOS-EFK-20(T)	2	2", 3"	545	350	210	650	480	210	243	110	140	70	49
TOS-EFK-30T	3	2", 3"	545	350	210	670	500	210	243	110	140	70	51
TOS-EFK-50T	5	3", 4"	730	520	230	745	580	270	310	160	150	70	79
TOS-EFK-75T	7.5	3", 4"	730	520	230	785	620	270	310	160	150	70	85
TOS-EFK-100T	10	4"	770	510	310	755	605	305	360	180	160	245	147
TOS-EFK-150T	15	4"	770	510	310	785	635	305	360	180	160	245	157

Remarks: ● TOS means cast iron guide rail device. (Q.D.C:Quick Discharge Device) ● "T" means 3 phase motor.