

EFD-series

Submersible Dredge Pump



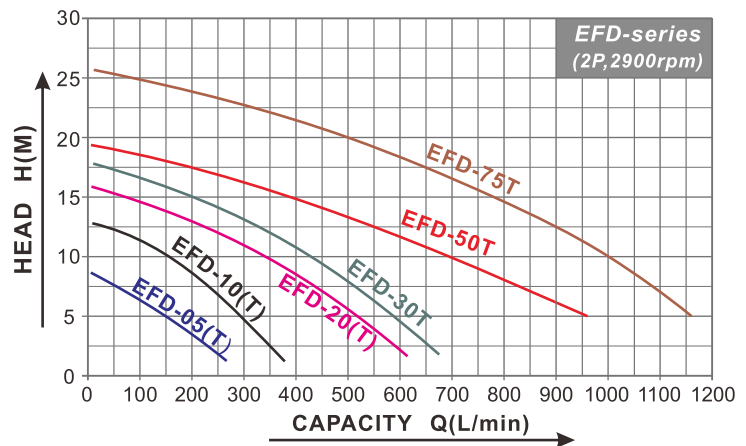
EVERGUSH®

50Hz



Non-clog vortex impeller with SUS316 Agitator

Performance Curves



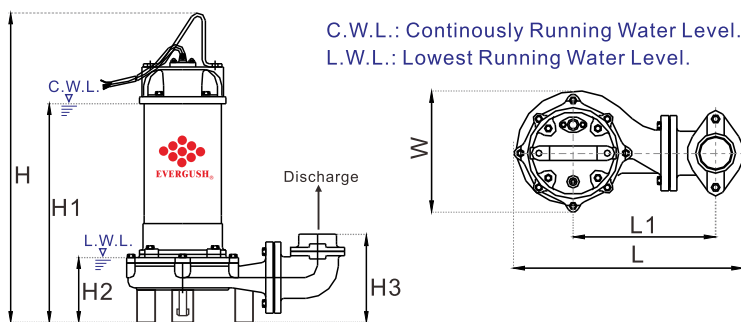
Features

- Superior abrasion resistant double mechanical seal made of silicon carbide(SIC) to ensure best seal effect and reduce abrasion from slurry.
- Equipped with stainless steel 316 agitator to create powerful stirring and pumping action for slurry.

Motor Spec.

- 2P dry type motor.
- Insulation: F class.
- Protection: IP68.
- Frequency: 50Hz.
- Voltage: 1 ϕ 220~240V(0.5~2HP).
- 3 ϕ 220~440V(all models).

Specifications & Dimensions

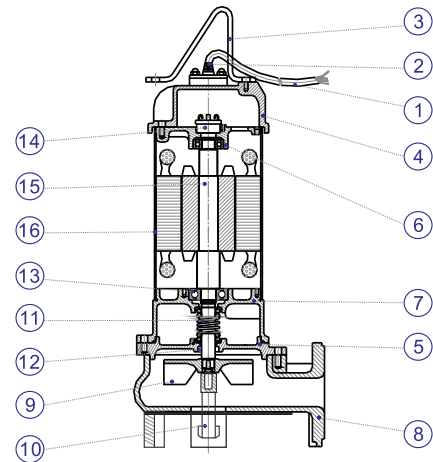


NOTE: Forbid running submersible pumps continuously under L.W.L.

Applications

- Drainage slurry from construction site, plant, etc.
- Civil or tunnel engineering.
- Animal husbandry. Wastewater containing solid sediments or excreta.

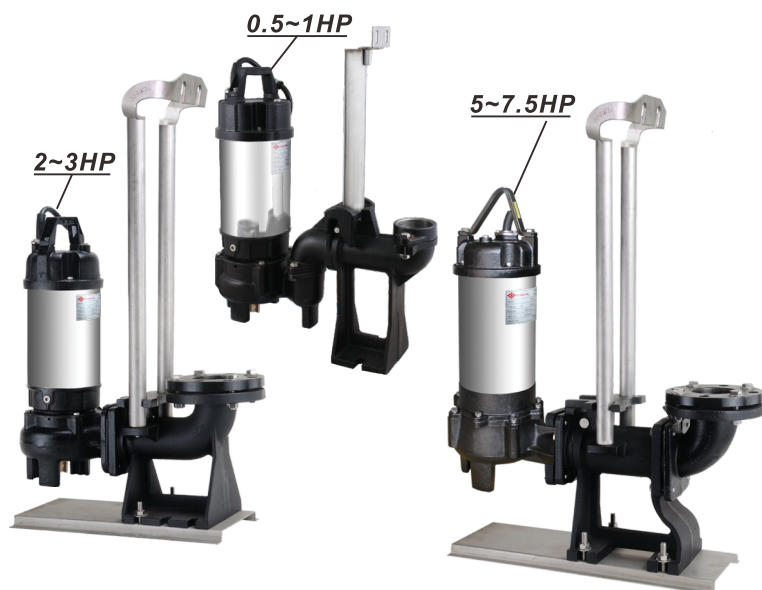
Parts & Materials List



NO	Part	Std. Material	NO	Part	Std. Material
1	Cable	UL_STOW	9	Impeller	FC200
2	Cable Hood	PVC	10	Agitator	SUS316
3	Handle	Nylon6/SS400	11	Mech. Seal	SIC
4	Motor Cover	Nylon66/ FC200	12	Oil Seal	NBR
5	Seal Housing	FC200	13	Bearing	(NTN brand)
6	Bracket	FC200	14	Protector	(T.I.brand)
7	Oil Chamber	FC200	15	Shaft	SUS410
8	Pump Casing	FC200	16	Motor Housing	SUS304

Model	Type	Power		Disch.	Phase	Rated		Max.		Dimensions (mm)							Cable	Net Weight	Solid Passage
		Head	Capacity			Head	Cap.												
		KW	HP	Inch	φ	M	LPM	M	LPM	L	L1	W	H	H1	H2	H3	M	KG	MM
EFD-05(A)(T)	Direct	0.37	0.5	2"	1,3	4~5	180~150	8.5	300	222	115	145	410	297	113	133	5	13	35
EFD-10(A)(T)	Direct	0.75	1	2"	1,3	6~8	270~220	13	400	222	115	149	464	340	113	133	5	18	35
EFD-20(A)(T)	Elbow	1.5	2	2", 3"	1,3	8~10	420~340	16	650	387	234	208	548	400	122	153	5	33	35
	Direct									316	163	208	548	400	122	153	5	30	35
EFD-30T	Elbow	2.2	3	2", 3"	3	10~12	430~350	18	700	387	234	208	568	420	122	153	5	35	35
	Direct									316	163	208	568	420	122	153	5	32	35
EFD-50T	Elbow	3.7	5	3", 4"	3	11~13	640~520	19.5	1100	459	256	227	638	471	160	220	5	55	50
EFD-75T	Elbow	5.5	7.5	3", 4"	3	15~18	780~620	26	1300	459	256	227	678	511	160	220	5	61	50

Remarks: ● (A): Equipped with float switch. ● (T): Three phase motor. ● Specific cable lengths are available upon request.



Product Features

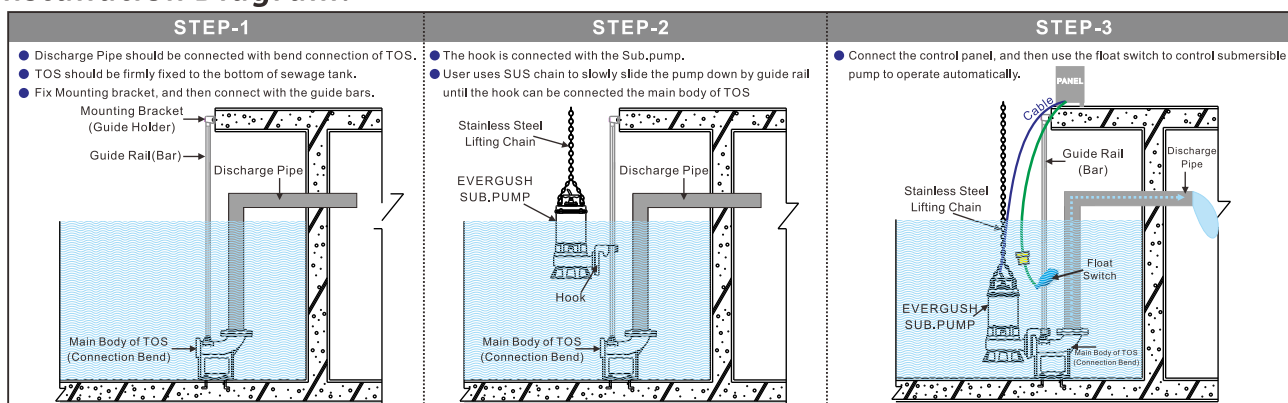
- Through simple and convenient install, we can connect the pump onto guide rail device. Whenever the pump needs maintenance, it can be easily pulled out through guide bar to dismantle, repair or examine the pump. For Safety purpose and to avoid biogas poisoning, the worker no longer needs to go down the septic tank for maintenance.

Applications

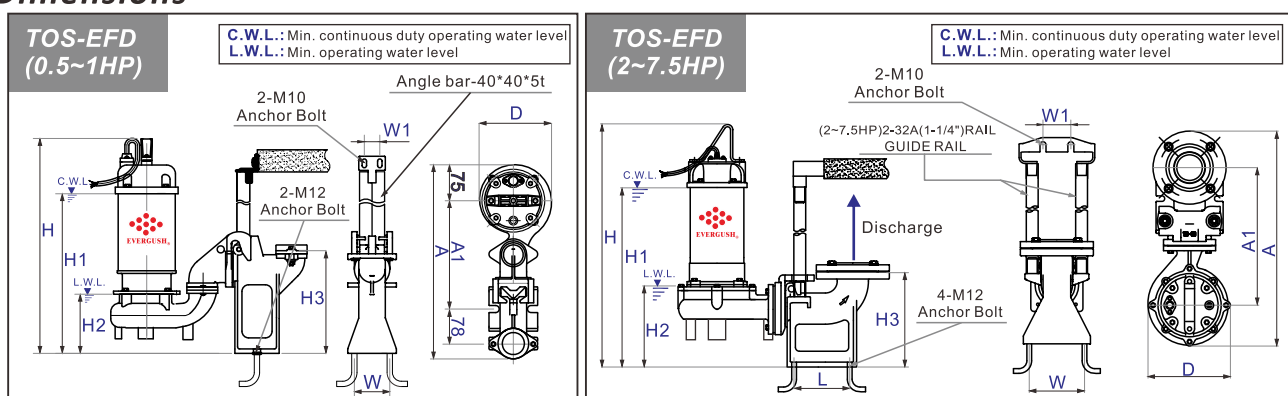
- Drainage slurry from construction sites, factories, etc. Animal husbandry and dairying septic tank waste water drainage; sewers, apartments, buildings and basements sewage treatment equipment drainage. Dye house, fur and leather industry and steel industry waste water drainage; other waste water treatment drainage. Wastewater containing solid sediments or excreta.



Installation Diagram:



Dimensions



Model	Power	Disch.	Dimensions(mm)										Net Weight (kg)
	HP	Inch	A	A1	D	H	H1	H2	H3	L	W	W1	
TOS-EFD-05(T)	0.5	2"	425	240	150	422	307	150	225	---	80	35	19
TOS-EFD-10(T)	1	2"	425	240	150	502	377	150	225	---	80	35	24
TOS-EFD-20(T)	2	2"; 3"	545	350	210	650	480	210	243	110	140	70	49
TOS-EFD-30T	3	2"; 3"	545	350	210	670	500	210	243	110	140	70	51
TOS-EFD-50T	5	3"; 4"	725	515	230	745	580	270	310	160	150	70	79
TOS-EFD-75T	7.5	3"; 4"	725	515	230	785	620	270	310	160	150	70	85

Remarks: ● TOS means cast iron guide rail device. (Q.D.C:Quick Discharge Device) ● "T" means 3 phase motor.