

# EA-series

## Submersible Sump Pump



**EVERGUSH®**

**50Hz**

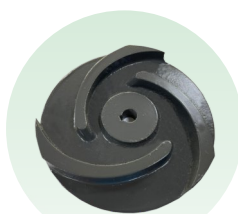


### Features

- Dry motor with overload protector; Cable with an epoxy resin sealed water-proof cable hood; Use deep groove C3 bearing to extend life time.
- Superior abrasion resistant double mechanical seal to ensure best seal effect.
- Oil seal mounted outside of seal chamber stops solids gathering around seal faces.
- Equipped with SUS304 strainer to prevent impeller from being blocked or damaged by sewage or solids.

### Motor Spec.

- 2P dry type motor.
- Insulation: F class.
- Protection: IP68.
- Frequency: 50Hz.
- Voltage: 1ø220~240V(0.5~2HP).  
3ø220~440V(all models).



Semi-open  
Non-Clogging Impeller

### Applications

- Waste water and sump pit drainage in basements of buildings, hotels, schools, restaurants, shopping malls, subways, construction sites, public places, etc.
- Rainwater effluent, stagnant water drainage, flood control, aqua-culture, landscape pond water circulation, etc.

#### Optional

Submersible sump pump with guide rail device



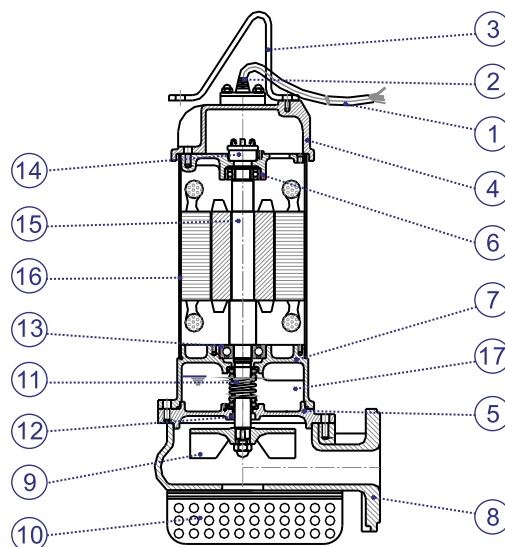
Optional Single phase sump pump with auto float switch. (0.5~2HP)



### Parts and Materials List

No.	Parts	Standard Material
		EA Model
1	Cable	UL_STOW
2	Cable hood	PVC
3	Handle	Nylon6 or SS400
4	Motor cover	Nylon66 or FC200
5	Seal housing	FC200
6	Bracket	FC200
7	Oil chamber	FC200
8	Pump casing	FC200
9	Impeller	FC200
10	Strainer	SUS304
11	Mech. seal	CA/CE
12	Oil seal	NBR
13	Bearing	(NTN brand)
14	Overload protector	(T.I.brand)
15	Shaft	SUS410
16	Motor housing	SUS304
17	Lubricant oil	(Turbine Oil ISO VG46)

• Mech. seal (sic/sic) material is available upon request.



### Operating Conditions

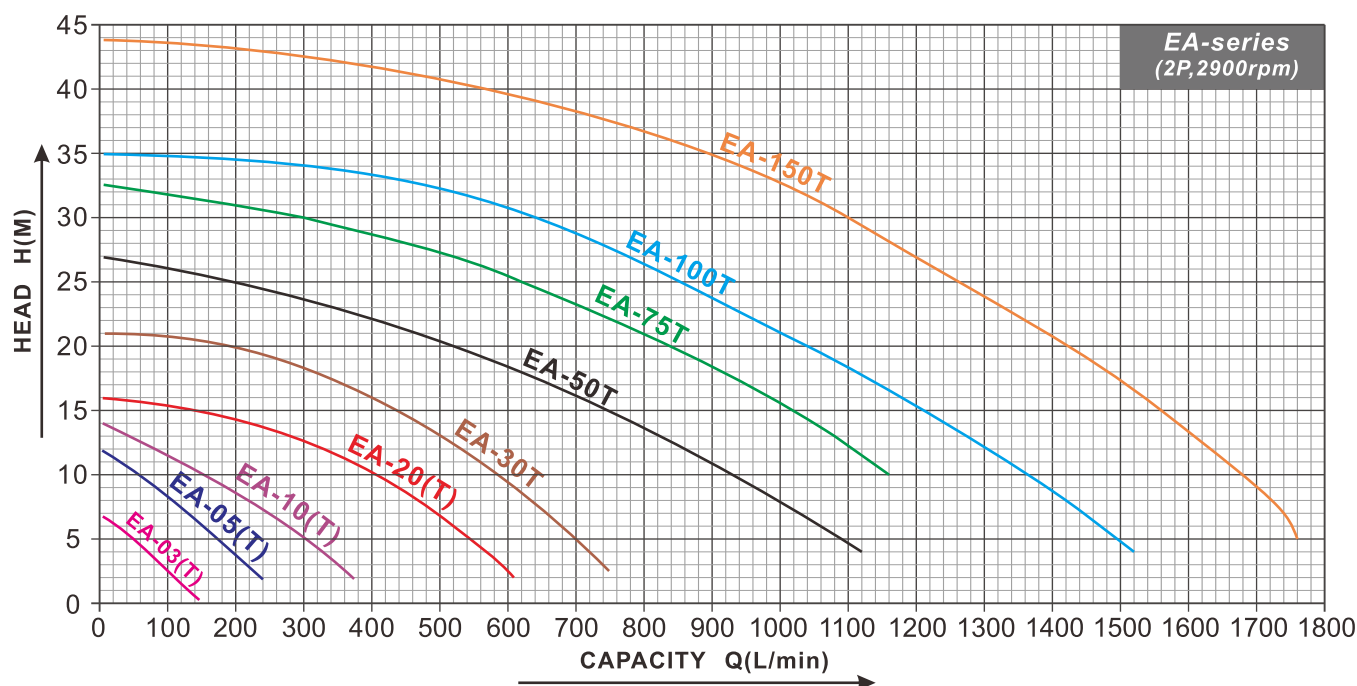
- Liquid temperature: 0~40°C.
- Ambient temperature: Max.40°C.
- Solid passage: Max.15mm.
- Don't use in seawater and highly corrosive liquids.
- 24 hours continuous operation is not allowed.

### Model Code

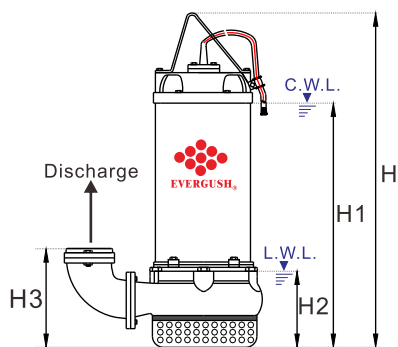
**EA-20 A T**

EA: Model name of sub. sump pump  
 20: HP: Number/10  
 A: Equipped with float switch  
 T: Three Phase Motor

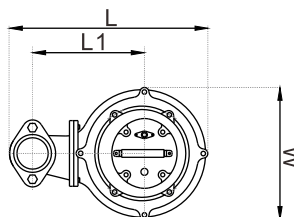
### Performance Curves



### Specifications & Dimensions



NOTE: Forbid running submersible pumps continuously under L.W.L.



C.W.L.: Continuously Running Water Level.  
 L.W.L.: Lowest Running Water Level.

Model	Power		Disch.	Phase	Rated		Max.		Dimensions (mm)							Cable Length	Net Weight	Solid Passage
	KW	HP			Head	Capacity	Head	Cap.	L	L1	W	H	H1	H2	H3			
EA-03(A)(T)	0.25	0.3	1.5"	1,3	4~5	70~50	7	150	195	135	138	325	213	75	73	5	9	5
EA-05(A)(T)	0.37	0.5	2"	1,3	5~6	175~150	12	260	221	115	141	373	260	76	97	5	13	6
EA-10(A)(T)	0.75	1	2"	1,3	8~10	210~150	14	400	330	193	173	451	327	100	155	5	23	6
EA-20(A)(T)	1.5	2	2"or 3"	1,3	9~12	440~330	16	650	403	250	212	536	388	110	164	5	33	8
EA-30T	2.2	3	2"or 3"	1,3	12~16	530~400	21	800	403	250	212	556	408	110	164	5	35	8
EA-50T	3.7	5	3"or 4"	3	15~20	750~520	27	1200	463	260	227	605	440	132	215	5	55	10
EA-75T	5.5	7.5	3"or 4"	3	17~25	950~620	32.5	1300	463	260	227	645	480	132	215	5	61	10
EA-100T	7.5	10	4"	3	20~25	1040~850	35	1550	560	310	310	690	540	250	300	10	105	15
EA-150T	11	15	4"	3	25~30	1260~1100	44	1800	560	310	310	720	570	250	300	10	115	15

Remarks: ● (A): Equipped with float switch. ● (T): Three phase motor. ● Specific cable lengths are available upon request.

# TOS-EA

## Submersible Sump Pump with Guide Rail Device



**EVERGUSH®**

**50Hz**

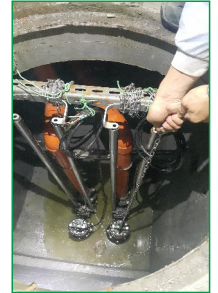


### Product Features

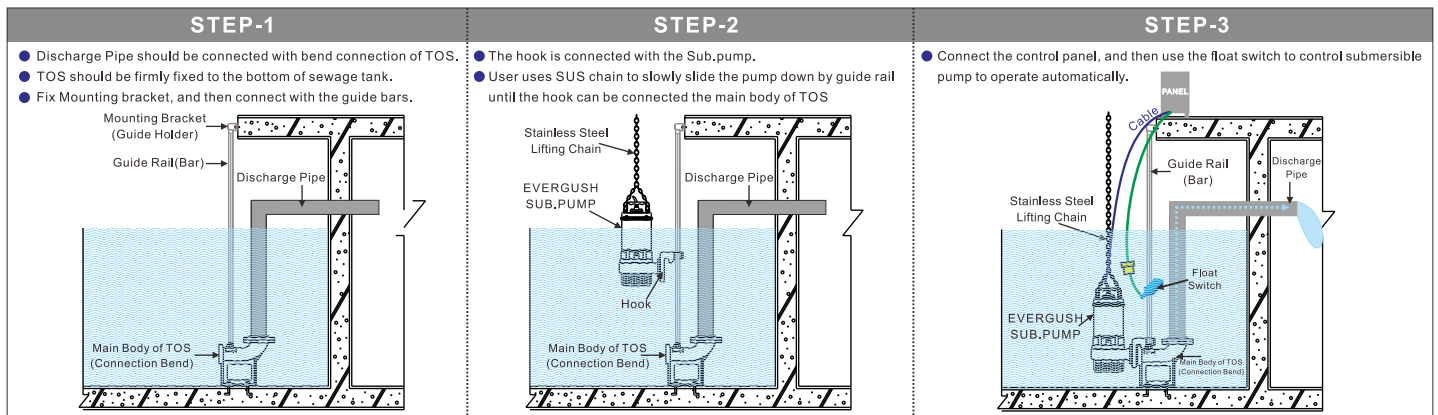
- Through simple and convenient install, we can connect the pump onto guide rail device. Whenever the pump needs maintenance, it can be easily pulled out through guide bar to dismantle, repair or examine the pump. For Safety purpose and to avoid biogas poisoning, the worker no longer needs to go down the septic tank for maintenance.

### Applications

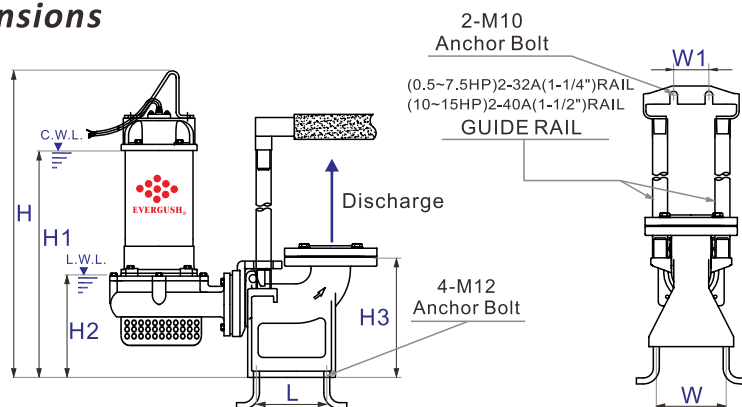
- Waste water and sump pit drainage in basements of buildings, hotels, schools, restaurants, shopping malls, subways, construction sites, public places, etc. Rainwater effluent, stagnant water drainage, flood control, aqua-culture, landscape pond water circulation, etc.



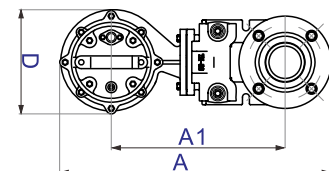
### Installation Diagram



### Dimensions



**C.W.L.:** Min. continuous duty operating water level  
**L.W.L.:** Min. operating water level



Model	Power		Pole	Disch.	Dimensions(mm)										Net Weight (kg)
	HP	KW			A	A1	D	H	H1	H2	H3	L	W	W1	
TOS-EA-05(T)	0.5	0.37	2	2"	490	311	173	469	356	172	243	110	140	70	29
TOS-EA-10(T)	1	0.75	2	2"	490	311	173	524	400	172	243	110	140	70	39
TOS-EA-20(T)	2	1.5	2	2"or 3"	564	368	210	601	453	175	243	110	140	70	49
TOS-EA-30T	3	2.2	2	2"or 3"	564	368	210	621	473	175	243	110	140	70	51
TOS-EA-50T	5	3.7	2	3"or 4"	730	520	230	718	553	245	310	160	150	70	79
TOS-EA-75T	7.5	5.5	2	3"or 4"	730	520	230	758	593	245	310	160	150	70	85
TOS-EA-100T	10	7.5	2	4"	770	508	310	755	605	315	360	180	160	245	147
TOS-EA-150T	15	11	2	4"	770	508	310	785	635	345	360	180	160	245	157

Remarks: ● TOS means cast iron guide rail device. (Q.D.C:Quick Discharge Device) ● (T): Three phase motor.