



▲ Operating Conditions

1. Ambient temperature: Max. 40°C.
2. Liquid temperature: 1~40°C.
3. 24Hr continuously running is allowed.

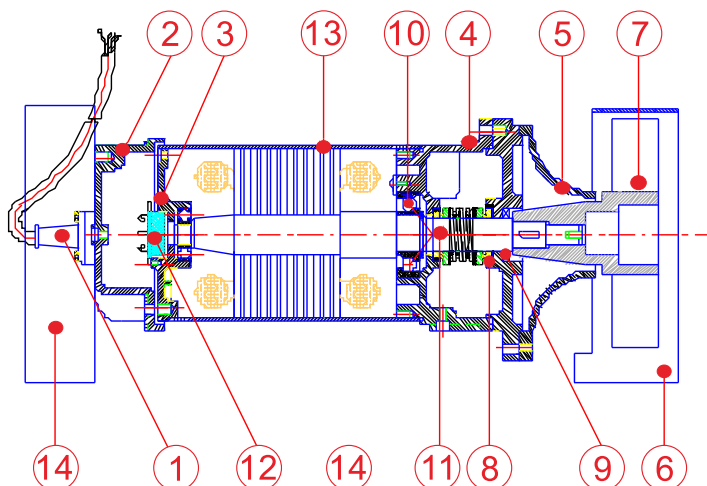
▲ Applications

1. Wastewater treatment of all industries.
2. River, ponds, lakes dredging.
3. Artificial flow of amusement facilities.
4. Mix and agitate impurities in waste water.

▲ Motor Spec.

1. Voltage: Only Three phase
2. Frequency: 60Hz
3. Enclosed class: IP68
4. Insulation: F
5. Pole: **4P**
6. Built in motor overload protector

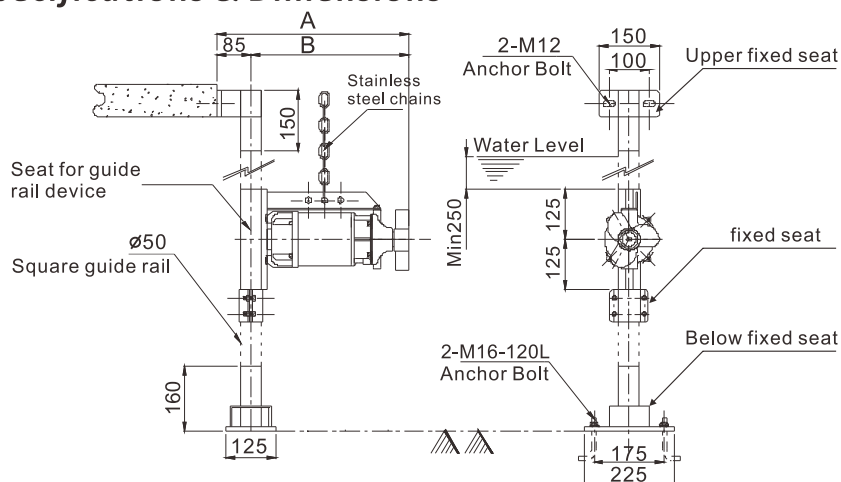
▲ Section View & Materials



NO.	NAME	EFM MTRL	EFMS MTRL
1	Cable	UL_STOW	UL_STOW
2	Motor upper cover	FC200	SUS316
3	Bearing housing	FC200	SUS316
4	Bracket	FC200	SUS316
5	Inlet housing	FC200	SUS316
6	Jet Ring	SUS304	SUS304
7	Mixer impeller	FCD450	SUS316
8	Mechanical seal	SIC/SIC	SIC/SIC
9	Oil seal	NBR	VITON
10	Bearing(NTN)	-----	-----
11	Shaft	SUS410	SUS316
12	Overload protector(T.I.)	-----	-----
13	Motor housing	SUS304	SUS316
14	Seat for guide rail device	SUS304	SUS304

●The original EFM cast iron impeller can be replaced with SUS316 material upon special request.

▲ Specifications & Dimensions



For easy maintenance and safety

OPTIONAL



Model	Model	Output		Pole	Capacity	Flow Speed	Dimensions(mm)		N.Weight
		KW	HP				A	B	
EFM-05T	EFMS-05T	0.37	0.5	4	108	1.78	480	395	16
EFM-10T	EFMS-10T	0.75	1	4	192	2.02	510	425	18
EFM-20T	EFMS-20T	1.50	2	4	270	2.50	632	567	40
EFM-30T	EFMS-30T	2.20	3	4	408	3.50	652	587	43