


2~3HP

5~7.5HP

**Fully cast iron
Motor Housing
-Great Heat
Dissipation**


Optional

EAF pump with guide rail device
(Q.D.C-Quick Discharge Connection)


Optional

EAF pump with sus304 strainer
(Solid passage: Max.6mm)

Features

- Non-clogging impeller minimizes abrasives wear and allows large solid passage.
- Dry motor with overload protector, cable with an epoxy resin sealed water-proof cable hood, high grade cast iron pump casing and motor housing, deep groove C3 bearing to extend life time.
- Superior abrasion resistant double mechanical seal made of silicon carbide to ensure best seal effect.
- Guide Rail Device is available for safety purpose.
- Oil seal mounted outside of seal chamber stops solids gathering around seal faces.

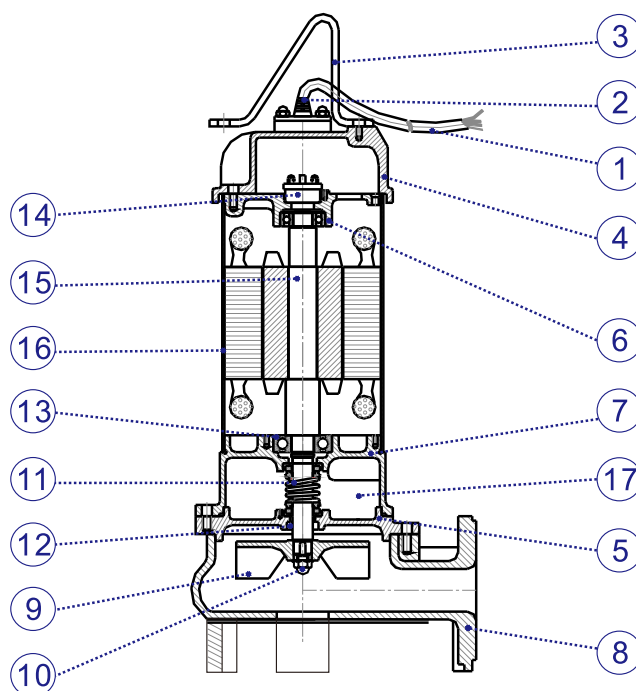
Parts and Materials List

No.	Parts	Std. Material
		EAF Model
1	Cable	UL_STOW
2	Cable hood	PVC
3	Handle	SS400
4	Motor cover	FC200
5	Seal housing	FC200
6	Bracket	FC200
7	Oil chamber	FC200
8	Pump casing	FC200
9	Impeller	FC200
10	Nut	SUS304
11	Mech. seal	SIC/SIC
12	Oil seal	NBR
13	Bearing	(NTN brand)
14	Overload protector	(T.I.brand)
15	Shaft	SUS410
16	Motor housing	FC200
17	Lubricant oil	(Turbine Oil ISO VG46)

• Mech.seal (sic/sic)material is optional upon request.

Applications

- Waste water drainage from all industries.
- Sewage drainage from hotels, restaurants, schools, malls, and public buildings..etc.
- Fishery, animal husbandry, stock farm, piggery, and fecal sewage tank in water treatment plant.
- Drainage of waste water containing fibrous additives from leather factories, dyeing factories and food processing plants.



Heavy Duty Submersible Sewage Pumps



60Hz

Model Code

EAF-20(A)(T)

-Three Phase Motor

- Equipped with auto float switch

- HP: Number/10

-Model name of sub. sewage /waste water pump



Non-clogging Vortex impeller

It can allow long fibrous materials and other solid waste to pass through. No clogging impeller.



Auto float switch

Single phase sub. pump equipped
with auto float switch.(2hp)

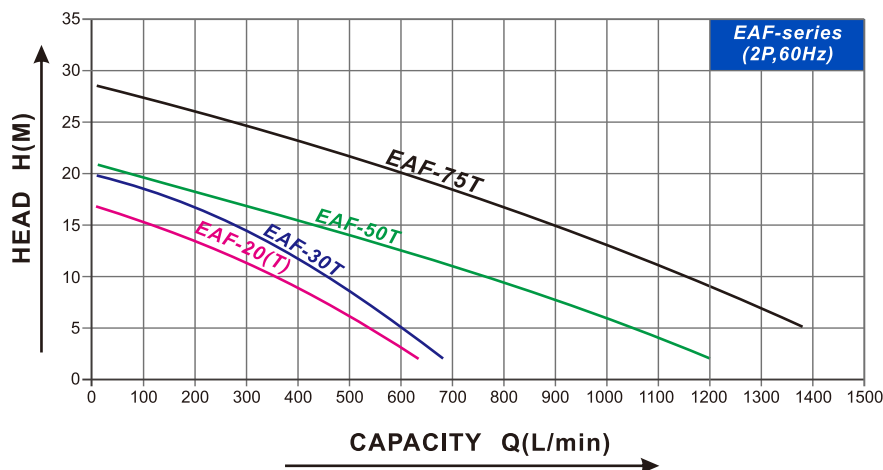
Operating Conditions

- Water temperature: 0~40°C.
- Ambient temperature: Max.40°C.
- Solid passage: 35~50MM.
- Operating water depth: Max.10M.
- No 24hrs continuously running.
- No use in (100%)pure sea water.

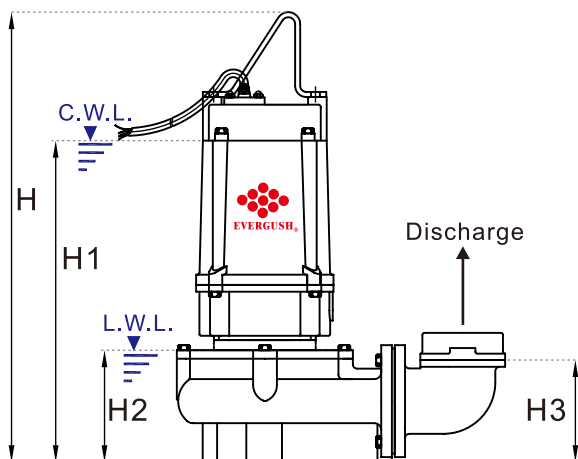
Motor Spec.

- 2P dry type motor.
- Insulation: F class.
- Protection: IP68.
- Frequency: 60Hz.
- Voltage: 1ø110~220V(only 2HP).
3ø220~440V(all models).

Performance Curves

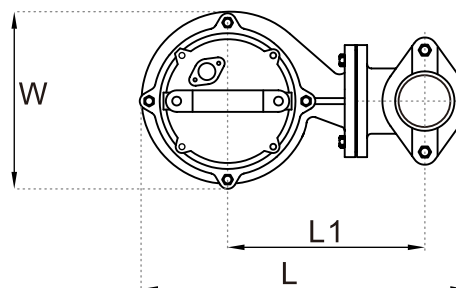


Specification & Dimension



C.W.L.: Continously Running Water Level.

L.W.L.: Lowest Running Water Level.



NOTE: Forbid running submersible pumps continuously under L.W.L.

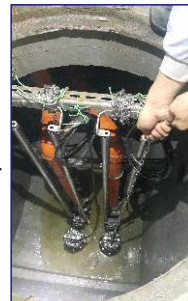
Model	Power		Disch.	Phase	Rated		Max.		Dimensions (mm)							Cable	Net Weight	Solid Passage
					Head	Capacity	Head	Cap.										
	KW	HP	Inch	φ	M	LPM	M	LPM	L	L1	W	H	H1	H2	H3	M	KG	MM
EAF-20(A)(T)	1.5	2	2"(3")	1,3	10~12	360~270	17.0	680	385	233	210	530	379	132	121	5	33	35
EAF-30T	2.2	3	2"(3")	3	10~14	450~320	20.0	750	385	233	210	560	409	132	121	5	37	35
EAF-50T	3.7	5	3"(4")	3	11~14	700~500	21.0	1300	459	256	227	625	465	182	200	5	62	50
EAF-75T	5.5	7.5	3"(4")	3	15~18	900~720	28.5	1500	459	256	227	665	505	182	200	5	67	50

Remarks: ●(A): Equipped with automatic float switch. ●(T): Three phase motor. ●10M cable are available for all models per special request.



Product Features

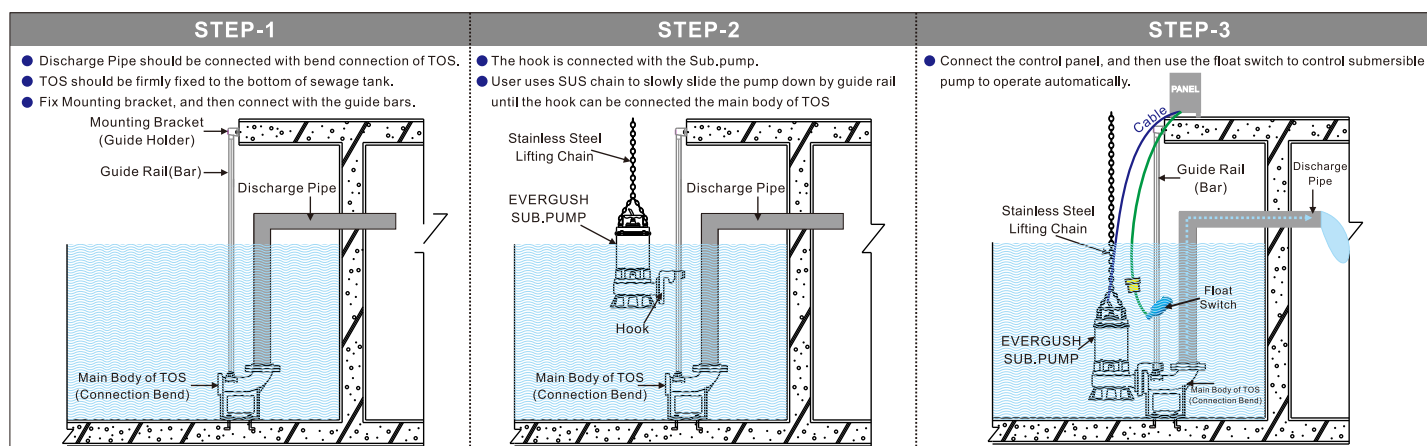
- Through simple and convenient install, we can connect the pump onto guide rail device. Whenever the pump needs maintenance, it can be easily pulled out through guide bar to dismantle, repair or examine the pump. For Safety purpose, the worker no longer needs to go down the septic tank for maintenance.



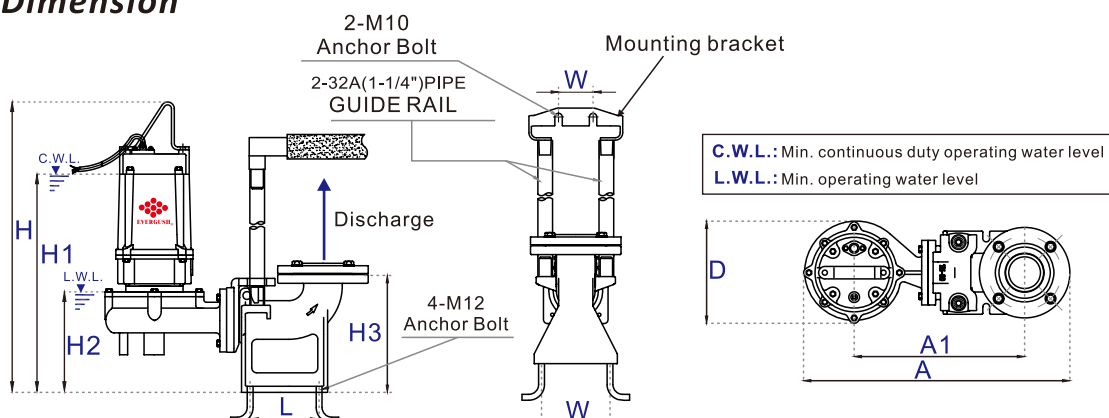
Applications

- Animal husbandry and dairying septic tank waste water drainage; sewers, apartments, buildings and basements sewage treatment equipment drainage. Dye house, fur and leather industry and steel industry waste water drainage; other waste water treatment drainage.

Installation Diagram



Dimension



Model	Matched TOS Model	Power	Disch.	Dimensions(mm)										Weight(KG)	
		HP	Inch	A	A1	D	H	H1	H2	H3	L	W	W I	TOS Device	TOS & PUMP
TOS-EAF-20(T)	TM-80	2	2"or 3"	547	352	210	607	455	210	243	110	140	70	16	49
TOS-EAF-30T	TM-80	3	2"or 3"	547	352	210	637	485	210	243	110	140	70	16	53
TOS-EAF-50T	TL-100	5	3"or 4"	725	515	230	733	573	290	310	160	150	70	24	86
TOS-EAF-75T	TL-100	7.5	3"or 4"	725	515	230	773	613	290	310	160	150	70	24	91

Remarks: ● TOS means cast iron guide rail device.(Q.D.C:Quick Discharge Device) ● "T" means 3 phase motor.