


0.3HP

0.5~1HP

2~3HP

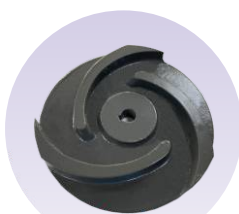
5~7.5HP

Features

- Dry motor with overload protector; Cable with an epoxy resin sealed water-proof cable hood; Use deep groove C3 bearing to extend life time.
- Superior abrasion resistant double mechanical seal to ensure best seal effect.
- Oil seal mounted outside of seal chamber stops solids gathering around seal faces.
- Equipped with SUS304 strainer to prevent impeller from being blocked or damaged by sewage or solids.

Motor Spec.

- 2P dry type motor.
- Insulation: F class.
- Protection: IP68.
- Frequency: 60Hz.
- Voltage: 1 ϕ 110~220V(0.5~2HP).
3 ϕ 220~440V(all models).


Non-clog impeller

Applications

- Wastewater, sump drainage from basement of buildings, hotels, schools, restaurants, malls, subway, construction site, public places..etc.
- Rainwater effluent, accumulated water drainage ,flood control, water circulation of aquaculture and landscape ponds..etc.

Optional

Submersible sump pump with guide rail device



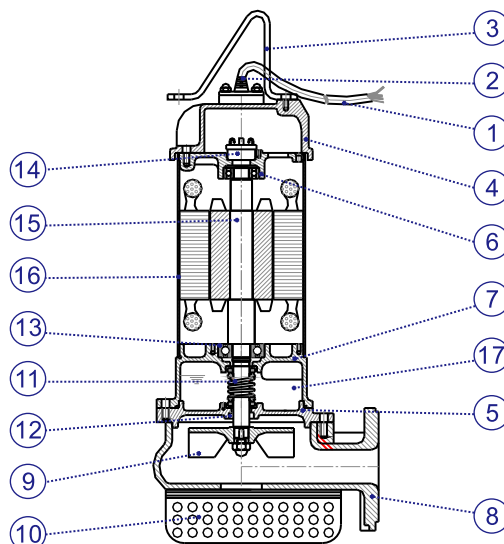
Optional Single phase sump pump with auto float switch. (0.5~2HP)



Parts and Materials List

No.	Parts	Standard Material
		EA Model
1	Cable	UL_STOW
2	Cable hood	PVC
3	Handle	Nylon6 or SS400
4	Motor cover	Nylon66 or FC200
5	Seal housing	FC200
6	Bracket	FC200
7	Oil chamber	FC200
8	Pump casing	FC200
9	Impeller	FC200
10	Strainer	SUS304
11	Mech. seal	CA/CE
12	Oil seal	NBR
13	Bearing	(NTN brand)
14	Overload protector	(T.I.brand)
15	Shaft	SUS410
16	Motor housing	SUS304
17	Lubricant oil	(Turbine Oil ISO VG46)

• Mech.seal (sic/sic)material is available upon request.



EA-series

Submersible Sump Pumps

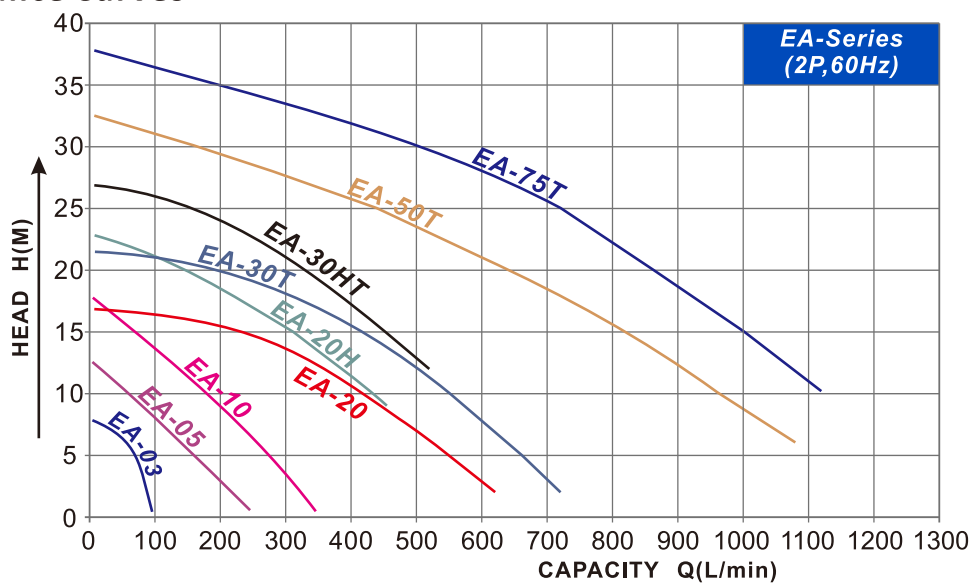


60Hz

Operating Conditions

- Water temperature: 0~40°C.
- Ambient temperature: Max.40°C.
- Solid passage: 6MM.
- Operating water depth: Max.10M.
- No use in sea water and high-corrosive liquids.
- No 24hrs continuously running.

Performance Curves

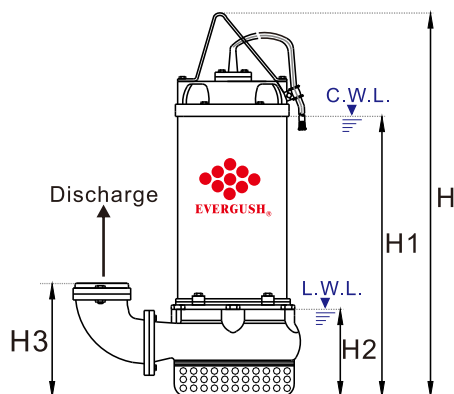


Model Code

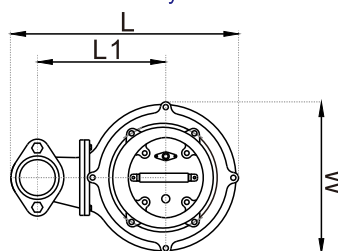
EA-20H(A)(T)

Three Phase Motor
Equipped with auto float switch
High Head Type
HP: Number/10
Model name of sub. sump pump

Specifications & Dimensions



NOTE: Forbid running submersible pumps continuously under L.W.L.



C.W.L.: Continuously Running Water Level.
L.W.L.: Lowest Running Water Level.

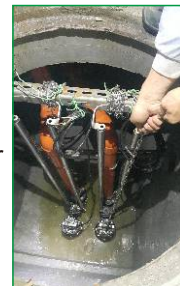
Model	Power		Disch.	Phase	Rated		Max.		Dimensions (mm)							Cable	Net Weight	Solid Passage
	KW	HP			Head	Capacity	Head	Cap.	L	L1	W	H	H1	H2	H3			
EA-03(A)(T)	0.25	0.3	1.5"	1,3	5~6	70~60	8	100	195	135	138	325	213	75	73	5	9	5
EA-05(A)(T)	0.37	0.5	2"	1,3	5~8	160~100	12.5	250	221	115	141	373	260	76	97	5	13	6
EA-10(A)(T)	0.75	1	2"	1,3	8~10	220~180	18	350	221	115	147	428	304	76	97	5	18	6
EA-20(A)(T)	1.5	2	2"(3")	1,3	12~14	360~280	17	650	403	250	212	536	388	110	164	5	33	6
EA-20H(A)(T)	1.5	2	2"(3")	1,3	16~17	280~250	23	500	403	250	212	536	388	110	164	5	33	6
EA-30T	2.2	3	2"(3")	3	12~15	500~420	21.5	750	403	250	212	556	408	110	164	5	35	6
EA-30HT	2.2	3	2"(3")	3	18~20	380~330	27	600	403	250	212	556	408	110	164	5	35	6
EA-50T	3.7	5	3"(4")	3	18~21	720~600	32.5	1200	463	260	227	605	440	132	215	5	55	6
EA-75T	5.5	7.5	3"(4")	3	25~28	720~600	38	1250	463	260	227	645	480	132	215	5	61	6

Remarks: ●(A): Equipped with automatic float switch. ●(T): Three phase motor. ●10M cable are available for all models per special request.



Product Features

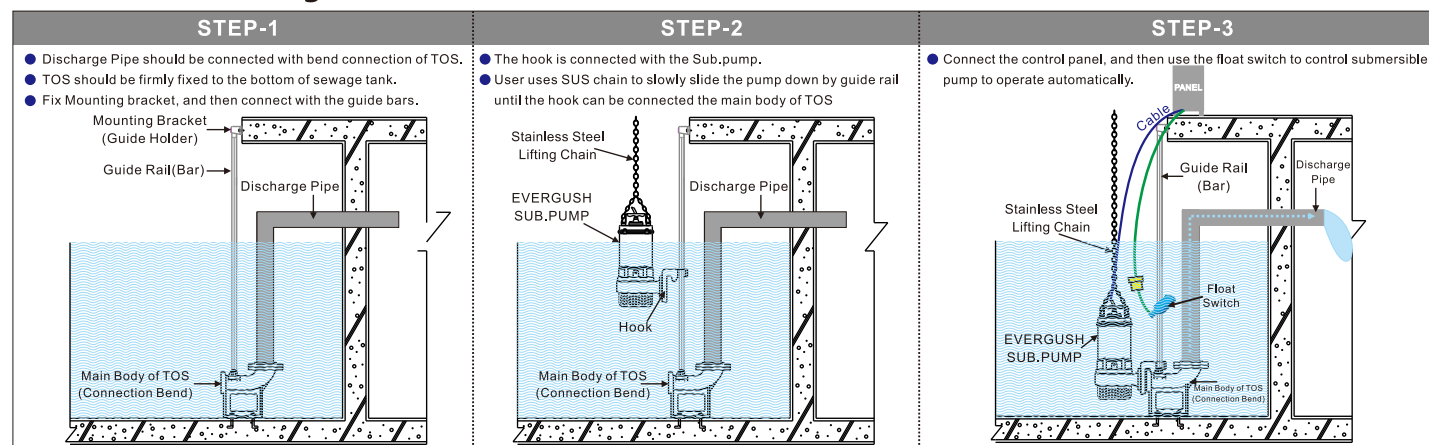
- Through simple and convenient install, we can connect the pump onto guide rail device. Whenever the pump needs maintenance, it can be easily pulled out through guide bar to dismantle, repair or examine the pump. For Safety purpose, the worker no longer needs to go down the septic tank for maintenance.



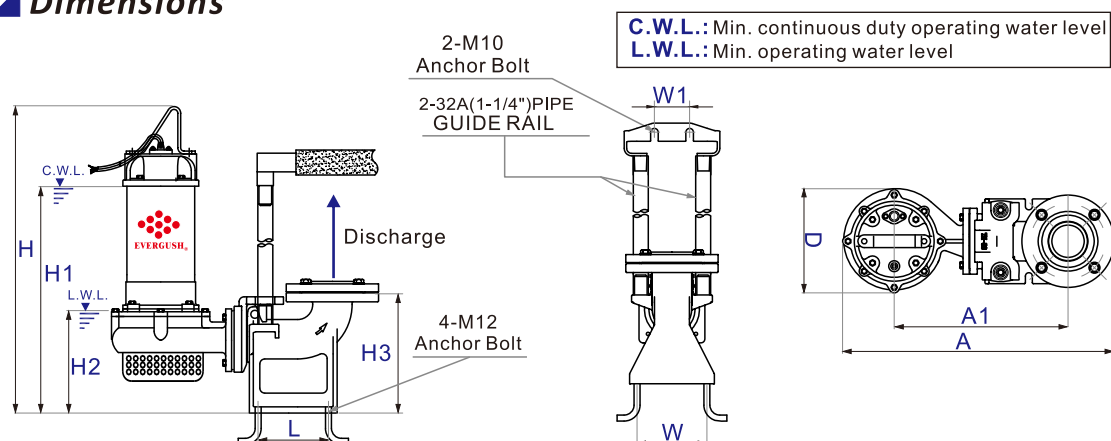
Applications

- Animal husbandry and dairying septic tank waste water drainage; sewers, apartments, buildings and basements sewage treatment equipment drainage. Dye house, fur and leather industry and steel industry waste water drainage; other waste water treatment drainage.

Installation Diagram



Dimensions



Model	Matched TOS Model	Power	Disch.	Dimensions(mm)										Weight(KG)	
		HP	Inch	A	A1	D	H	H1	H2	H3	L	W	W I	TOS Device	TOS & PUMP
TOS-EA-05(T)	TM-50	0.5	2"	490	311	173	469	356	172	243	110	140	70	16	29
TOS-EA-10(T)	TM-50	1	2"	490	311	173	524	400	172	243	110	140	70	16	34
TOS-EA-20(T)	TM-80	2	3"	564	368	210	601	453	175	243	110	140	70	16	50
TOS-EA-30T	TM-80	3	3"	564	368	210	621	473	175	243	110	140	70	16	52
TOS-EA-50T	TL-100	5	4"	730	520	230	718	553	245	310	160	150	70	24	80
TOS-EA-75T	TL-100	7.5	4"	730	520	230	758	593	245	310	160	150	70	24	86

Remarks: ● TOS means cast iron guide rail device. (Q.D.C:Quick Discharge Device) ● "T" means 3 phase motor.