

**EVERGUSH Stainless Steel  
Sub.bore pumps for deep wells**

**SUS 井用系列**



PARTS	MATERIAL
A Discharge flang	SUS304
B Discharge chamber	SUS304
C Impeller	SUS304
D Suction gasket	NBR
E Pump casing	SUS304
F Balance sleeve ring	NBR
G Suction frame	SUS304
H Trust bearing housing	SUS304
I Lower bearing housing	SUS304
J Upper bearing housing	SUS304

● Wet parts are SUS304 material, to ensure clean, non-rusty water provided.

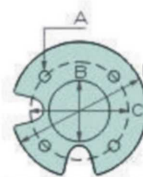
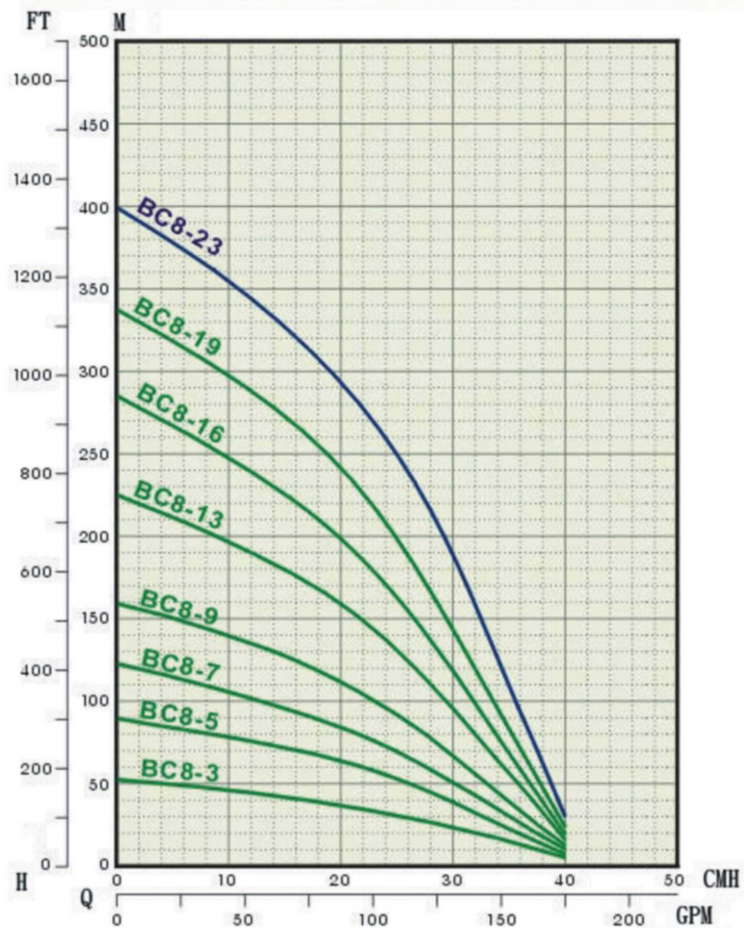
● Multi-stage impellers are SUS304 material, to alleviate abrasion from sand and abrasives in the underground water.



## 8" STAINLESS STEEL SUBMERSIBLE PUMPS FOR DEEP WELLS

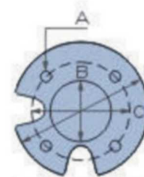


### PERFORMANCE CURVES



A:  $\phi 14.68\text{mm}$   
B:  $\phi 76.15\text{mm}$   
C:  $\phi 111.0\text{mm}$   
D:  $\phi 137.0\text{mm}$

6"-MOTOR



A:  $\phi 19.0\text{mm}$   
B:  $\phi 127.0\text{mm}$   
C:  $\phi 152.4\text{mm}$   
D:  $\phi 195.5\text{mm}$

8"-MOTOR

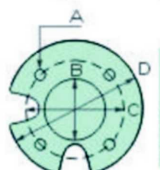
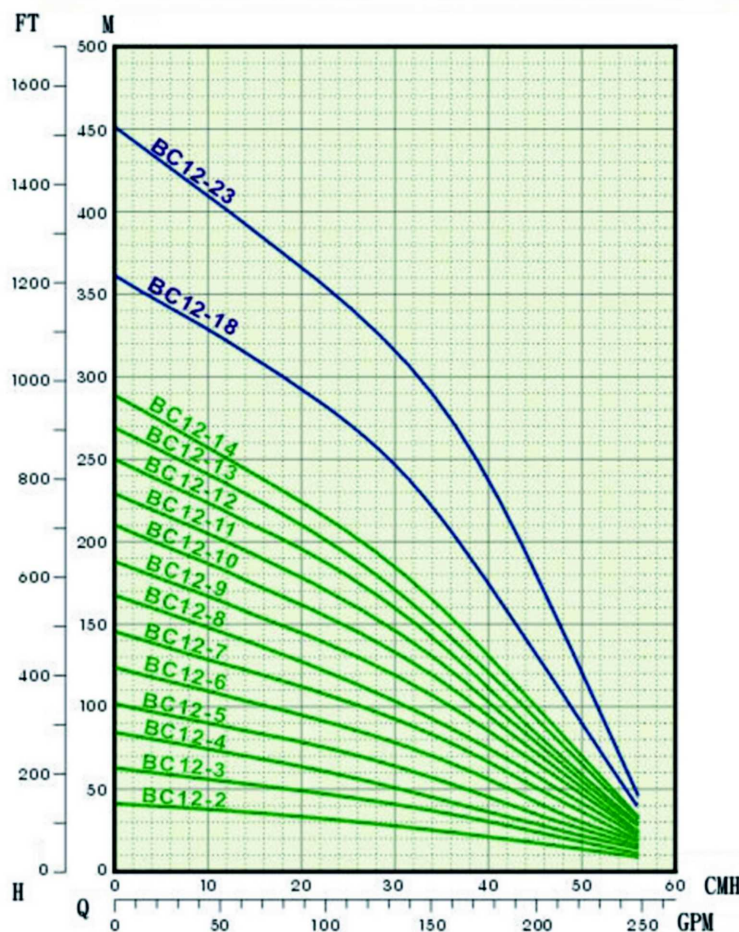
### SPECIFICATION

WELL dia.	型 式 TYPE	段 數 STAGES	馬 力 MOTOR		尺 寸 DIMENSION		Head(H): Meter(M) Capacity(C):Gallon/min(GPM)			
			KW	HP	L	L1	STANDARD		MAXIMUM	
							H	C	H	C
8"	BC8-3	3	3.7	5	359	165	34	100	54	175
	BC8-5	5	5.5	7.5	454	165	60	100	90	175
	BC8-7	7	7.5	10	549	165	77	100	123	175
	BC8-9	9	11	15	644	165	104	100	160	175
	BC8-13	13	15	20	834	165	145	100	225	175
	BC8-16	16	18.5	25	976.5	165	180	100	285	175
	BC8-19	19	22	30	1119	165	217	100	337	175
10"	BC8-23	23	30	40	1309	165	270	100	400	175

09/2012

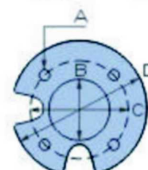
## 8" STAINLESS STEEL SUBMERSIBLE PUMPS FOR DEEP WELLS

### PERFORMANCE CURVES



A:  $\phi 14.68\text{mm}$   
B:  $\phi 76.15\text{mm}$   
C:  $\phi 111.0\text{mm}$   
D:  $\phi 137.0\text{mm}$

6" - MOTOR



A:  $\phi 19.0\text{mm}$   
B:  $\phi 127.0\text{mm}$   
C:  $\phi 152.4\text{mm}$   
D:  $\phi 195.5\text{mm}$

8" - MOTOR

### 尺寸/性能規格表

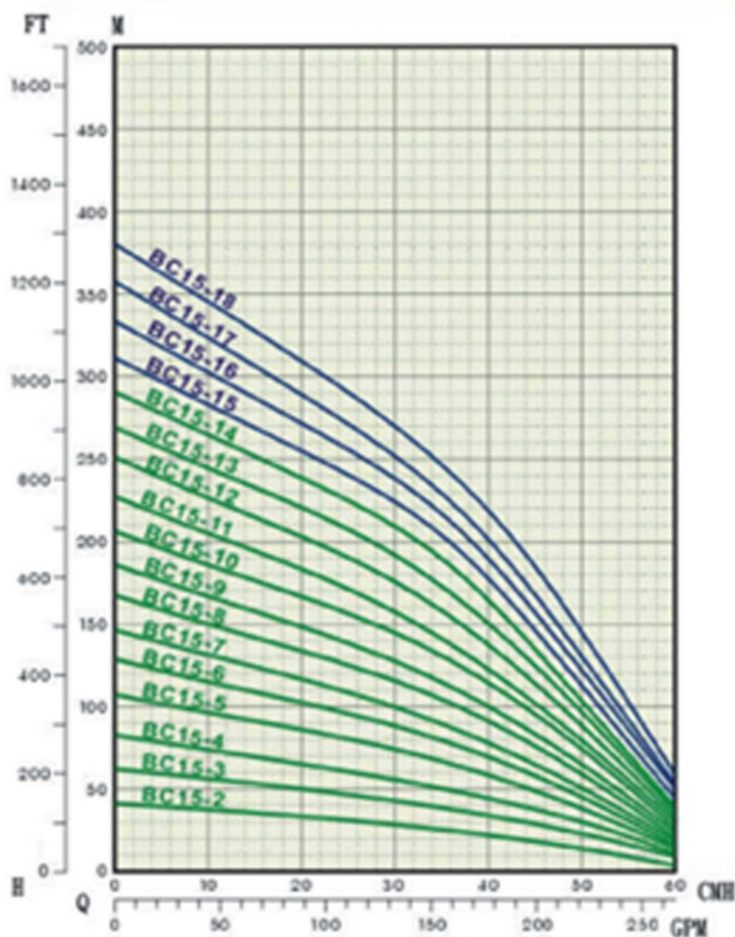
WELL dia.	型 式 TYPE	段 數 STAGES	馬 力 MOTOR		尺 寸 DIMENSION		Head(H): Meter(M) Capacity(C):Gallon/min(GPM)			
							STANDARD		MAXIMUM	
			KW	HP	L	L1	H	C	H	C
8"	BC12-2	2	3.7	5	330	165	29	120	41	250
	BC12-3	3	5.5	7.5	387	165	43	120	62	250
	BC12-4	4	7.5	10	444	165	55	120	82.5	250
	BC12-5	5	7.5	10	501	165	67	120	101	250
	BC12-6	6	11	15	558	165	83	120	122	250
	BC12-7	7	11	15	615	165	97	120	144	250
	BC12-8	8	13	17.5	672	165	112	120	165	250
	BC12-9	9	15	20	729	165	127	120	187	250
	BC12-10	10	16.5	22.5	786	165	138	120	208	250
	BC12-11	11	18.5	25	843	165	156	120	228	250
	BC12-12	12	20.5	27.5	900	165	173	120	250	250
	BC12-13	13	22	30	957	165	185	120	267	250
	BC12-14	14	22	30	1014	165	197	120	288	250
10"	BC12-18	18	30	40	1242	165	259	120	360	250
	BC12-23	23	37.5	50	1527	165	331	120	460	250

09/2012



## 8" STAINLESS STEEL SUBMERSIBLE PUMPS FOR DEEP WELLS

### PERFORMANCE CURVES



A:  $\phi 14.68\text{mm}$   
B:  $\phi 76.15\text{mm}$   
C:  $\phi 111.0\text{mm}$   
D:  $\phi 137.0\text{mm}$

8"-MOTOR



A:  $\phi 19.0\text{mm}$   
B:  $\phi 127.0\text{mm}$   
C:  $\phi 152.4\text{mm}$   
D:  $\phi 195.5\text{mm}$

10"-MOTOR

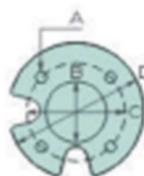
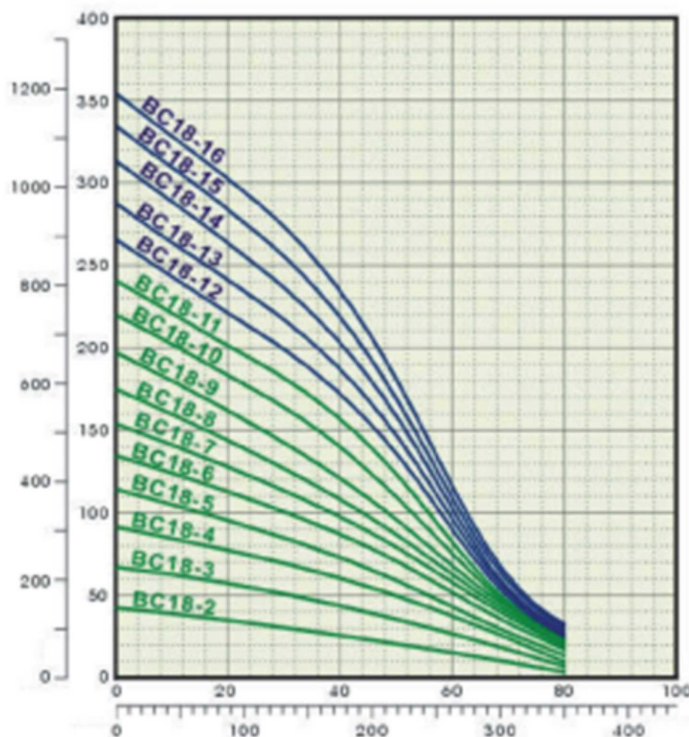
### SPECIFICATION

WELL dia.	型式 TYPE	段数 STAGES	馬力 MOTOR		尺寸 DIMENSION		Head(H): Meter(M) Capacity(C):Gallon/min(GPM)			
			KW	HP	L	L1	STANDARD		MAXIMUM	
							H	C	H	C
8"	BC15-2	2	3.7	5	330	165	27	150	41	280
	BC15-3	3	5.5	7.5	387	165	40	150	62	280
	BC15-4	4	7.5	10	444	165	53	150	82.5	280
	BC15-5	5	9	12.5	501	165	70	150	107	280
	BC15-6	6	11	15	558	165	83	150	127.5	280
	BC15-7	7	13	17.5	615	165	93	150	146	280
	BC15-8	8	15	20	672	165	107	150	167	280
	BC15-9	9	16.5	22.5	729	165	118	150	185	280
	BC15-10	10	18.5	25	786	165	134	150	206	280
	BC15-11	11	20.5	27.5	843	165	146	150	225	280
	BC15-12	12	22	30	900	165	164	150	250	280
	BC15-13	13	26	35	957	165	179	150	268	280
10"	BC15-14	14	26	35	1014	165	196	150	290	280
	BC15-15	15	30	40	1071	165	210	150	310	280
	BC15-16	16	30	40	1128	165	223	150	333	280
	BC15-17	17	33.5	45	1185	165	235	150	357	280
	BC15-18	18	37.5	50	1242	165	253	150	380	280

## 8" STAINLESS STEEL SUBMERSIBLE PUMPS FOR DEEP WELLS



### PERFORMANCE CURVES



A:  $\phi 14.68\text{mm}$   
B:  $\phi 76.15\text{mm}$   
C:  $\phi 111.0\text{mm}$   
D:  $\phi 137.0\text{mm}$

6"-MOTOR



A:  $\phi 19.0\text{mm}$   
B:  $\phi 127.0\text{mm}$   
C:  $\phi 152.4\text{mm}$   
D:  $\phi 195.5\text{mm}$

8"-MOTOR

### SPECIFICATION

WELL dia.	型式 TYPE	段數 STAGES	馬力 MOTOR		尺寸 DIMENSION		Head(H): Meter(M) Capacity(C):Gallon/min(GPM)			
							STANDARD		MAXIMUM	
			KW	HP	L	L1	H	C	H	C
8"	BC18-2	2	5.5	7.5	340	165	25	180	42	350
	BC18-3	3	7.5	10	400	165	43	180	67	350
	BC18-4	4	9	12.5	460	165	61	180	91	350
	BC18-5	5	11	15	520	165	73	180	114	350
	BC18-6	6	13	17.5	580	165	87	180	134	350
	BC18-7	7	15	20	640	165	97	180	154	350
	BC18-8	8	18.5	25	700	165	108	180	174	350
	BC18-9	9	22	30	760	165	123	180	196	350
	BC18-10	10	26	35	820	165	142	180	220	350
	BC18-11	11	26	35	880	165	154	180	241	350
10"	BC18-12	12	30	40	940	165	170	180	265	350
	BC18-13	13	30	40	1000	165	187	180	286	350
	BC18-14	14	37.5	50	1060	165	203	180	312	350
	BC18-15	15	37.5	50	1120	165	216	180	334	350
	BC18-16	16	37.5	50	1180	165	283	180	354	350

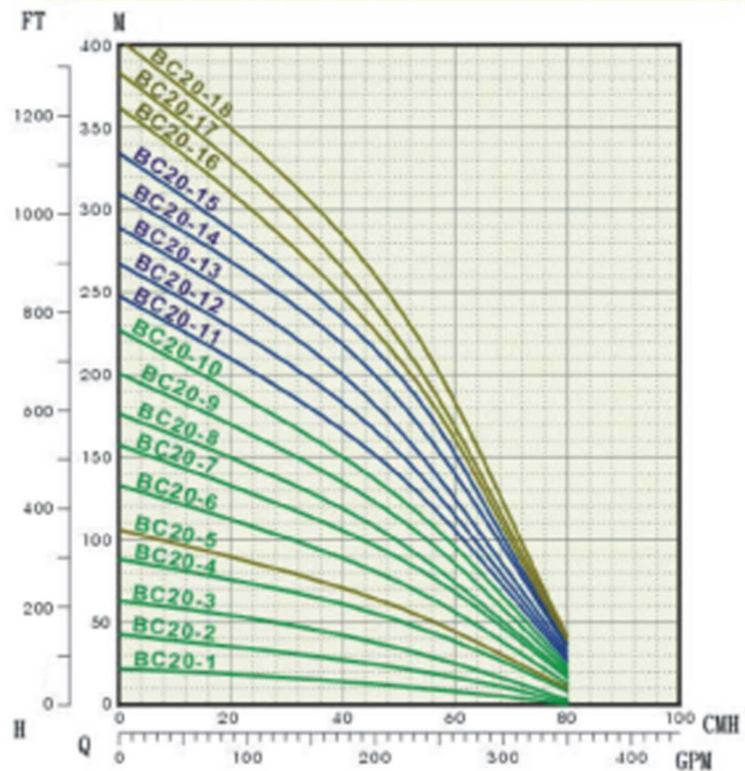
09/2012



## 8" STAINLESS STEEL SUBMERSIBLE PUMPS FOR DEEP WELLS



### PERFORMANCE CURVES



A:  $\phi 14.68\text{mm}$   
B:  $\phi 76.15\text{mm}$   
C:  $\phi 111.0\text{mm}$   
D:  $\phi 137.0\text{mm}$

6"-MOTOR



A:  $\phi 19.0\text{mm}$   
B:  $\phi 127.0\text{mm}$   
C:  $\phi 152.4\text{mm}$   
D:  $\phi 195.5\text{mm}$

8"-MOTOR

### SPECIFICATION

WELL dia.	型式 TYPE	段數 STAGES	馬力 MOTOR		尺寸 DIMENSION		Head(H): Meter(M) Capacity(C): Gallon/min(GPM)			
							STANDARD		MAXIMUM	
			KW	HP	L	L1	H	C	H	C
8"	BC20-1	1	3.7	5	280	165	13	190	21	370
	BC20-2	2	5.5	7.5	340	165	25	190	42	370
	BC20-3	3	7.5	10	400	165	40	190	52	370
	BC20-4	4	11	15	460	165	58	190	88	370
	BC20-5	5	13	17.5	520	165	68	190	106	370
	BC20-6	6	15	20	580	165	85	190	132	370
	BC20-7	7	18.5	25	640	165	101	190	167	370
	BC20-8	8	18.5	25	700	165	113	190	176	370
	BC20-9	9	22	30	760	165	128	190	200	370
	BC20-10	10	26	35	820	165	143	190	227	370
10"	BC20-11	11	30	40	880	165	158	190	248	370
	BC20-12	12	30	40	940	165	175	190	267	370
	BC20-13	13	37.5	50	1000	165	190	190	288	370
	BC20-14	14	37.5	50	1060	165	207	190	310	370
	BC20-15	15	37.5	50	1120	165	223	190	334	370
12"	BC20-16	16	45	60	1180	165	236	190	362	370
	BC20-17	17	45	60	1240	165	253	190	383	370
	BC20-18	18	45	60	1300	165	271	190	408	370