

**EVERGUSH Stainless Steel
Sub.bore pumps for deep wells**

SUS 井用系列



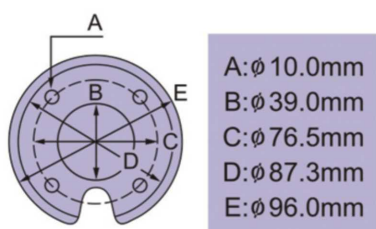
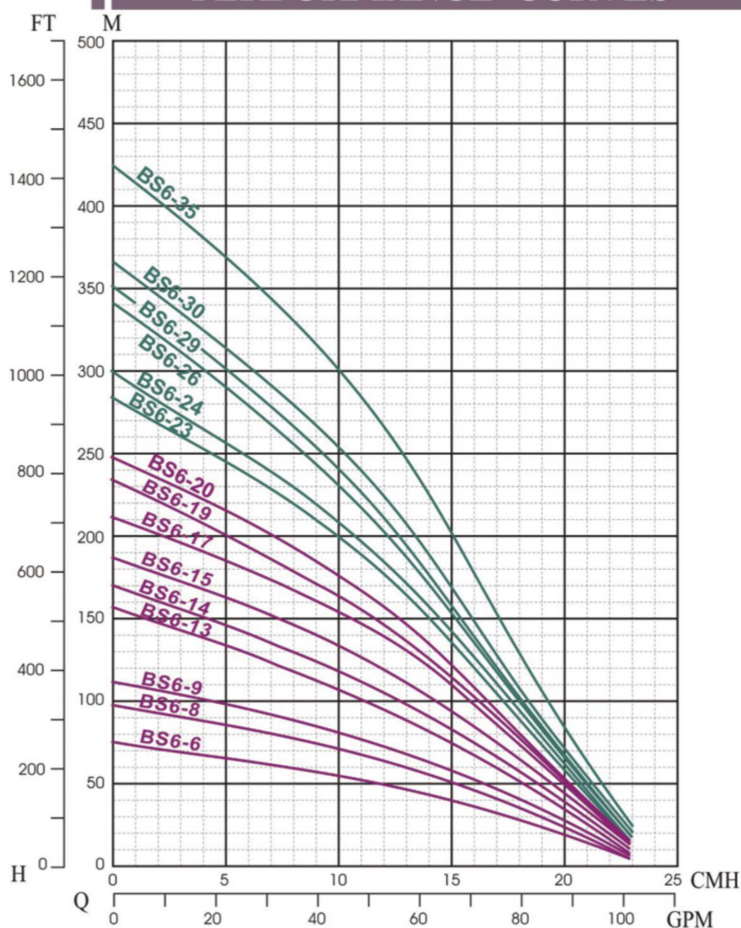
PARTS		MATERIAL
A	Discharge flang	SUS304
B	Discharge chamber	SUS304
C	Impeller	SUS304
D	Suction gasket	NBR
E	Pump casing	SUS304
F	Balance sleeve ring	NBR
G	Suction frame	SUS304
H	Trust bearing housing	SUS304
I	Lower bearing housing	SUS304
J	Upper bearing housing	SUS304

● Wet parts are SUS304 material, to ensure clean, non-rusty water provided.

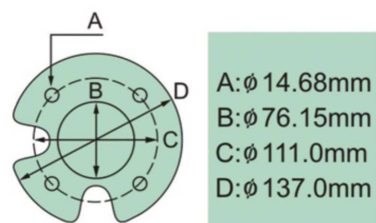
● Multi-stage impellers are SUS304 material, to alleviate abrasion from sand and abrasives in the underground water.

6" STAINLESS STEEL SUBMERSIBLE PUMPS FOR DEEP WELLS

PERFORMANCE CURVES



4" – MOTOR



6" – MOTOR



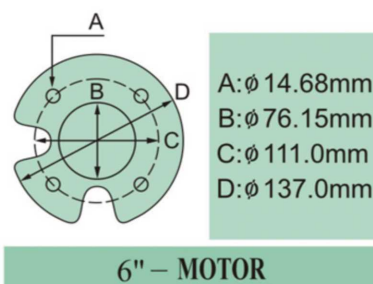
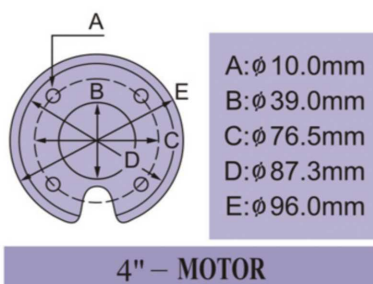
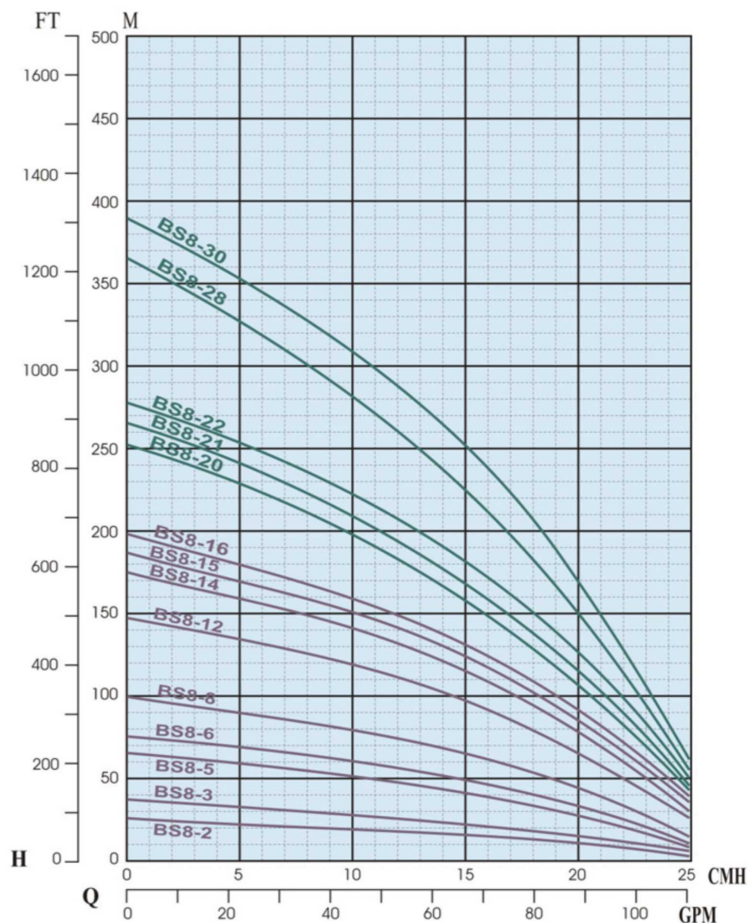
SPECIFICATION

WELL dia.	型 式 TYPE	段 數 STAGES	馬 力 MOTOR		尺 寸 DIMENSION		Head(H): Meter(M) Capacity(C):Gallon/min(GPM)			
							STANDARD		MAXIMUM	
							H	C	H	C
6"	BS6-6	6	3.7	5	510	127	50	50	75	100
	BS6-8	8	5.5	7.5	605	127	68	50	99	100
	BS6-9	9	5.5	7.5	652.5	127	77	50	112	100
	BS6-13	13	7.5	10	842.5	127	100	50	157	100
	BS6-14	14	7.5	10	890	127	110	50	170	100
	BS6-15	15	9	12.5	937.5	127	124	50	187	100
	BS6-17	17	9	12.5	1032.5	127	145	50	215	100
	BS6-19	19	11	15	1127.5	127	153	50	233	100
	BS6-20	20	11	15	1175	127	163	50	248	100
8"	BS6-23	23	11	15	1317.5	127	183	50	283	100
	BS6-24	24	13	17.5	1365	127	192	50	299	100
	BS6-28	28	15	20	1555	127	213	50	341	100
	BS6-29	29	15	20	1602.5	127	220	50	353	100
	BS6-30	30	15	20	1650	127	235	50	366	100
	BS6-35	35	18.5	25	1887.5	127	278	50	425	100

09/2012

6" STAINLESS STEEL SUBMERSIBLE PUMPS FOR DEEP WELLS

PERFORMANCE CURVES



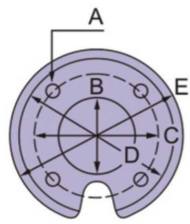
SPECIFICATION

WELL dia.	型 式 TYPE	段 數 STAGES	馬 力 MOTOR		尺 寸 DIMENSION		Head(H): Meter(M) Capacity(C):Gallon/min(GPM)			
							STANDARD		MAXIMUM	
			KW	HP	L	L1	H	C	H	C
6"	BS8-2	2	1.5	2	329	127	15	65	25	120
	BS8-3	3	2.2	3	376.5	127	23	65	37	120
	BS8-5	5	3.7	5	462.5	127	41	65	65	120
	BS8-6	6	3.7	5	510	127	50	65	75	120
	BS8-8	8	5.5	7.5	605	127	67	65	99	120
	BS8-12	12	7.5	10	795	127	99	65	147	120
	BS8-14	14	11	15	890	127	116	65	174	120
	BS8-15	15	11	15	937.5	127	125	65	186	120
8"	BS8-16	16	11	15	985	127	133	65	197	120
	BS8-20	20	13	17.5	1175	127	159	65	253	120
	BS8-21	21	13	17.5	1222.5	127	170	65	264	120
	BS8-22	22	15	20	1270	127	184	65	275	120
	BS8-28	28	18.5	25	1555	127	228	65	364	120
	BS8-30	30	18.5	25	1650	127	256	65	390	120

09/2012

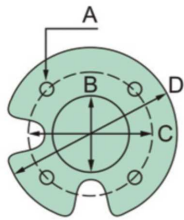
6" STAINLESS STEEL SUBMERSIBLE PUMPS FOR DEEP WELLS

PERFORMANCE CURVES



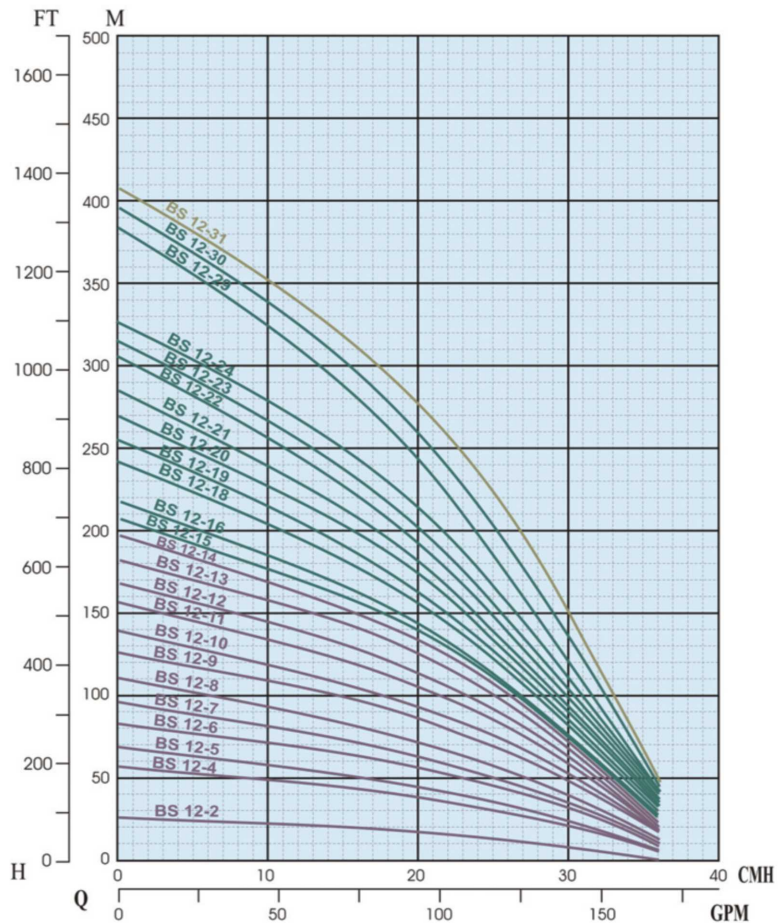
A: $\phi 10.0\text{mm}$
B: $\phi 39.0\text{mm}$
C: $\phi 76.5\text{mm}$
D: $\phi 87.3\text{mm}$
E: $\phi 96.0\text{mm}$

4" – MOTOR



A: $\phi 14.68\text{mm}$
B: $\phi 76.15\text{mm}$
C: $\phi 111.0\text{mm}$
D: $\phi 137.0\text{mm}$

6" – MOTOR



SPECIFICATION

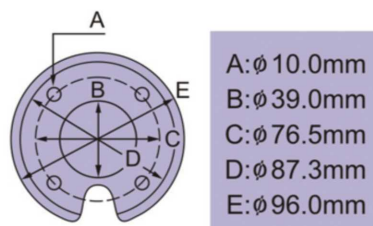
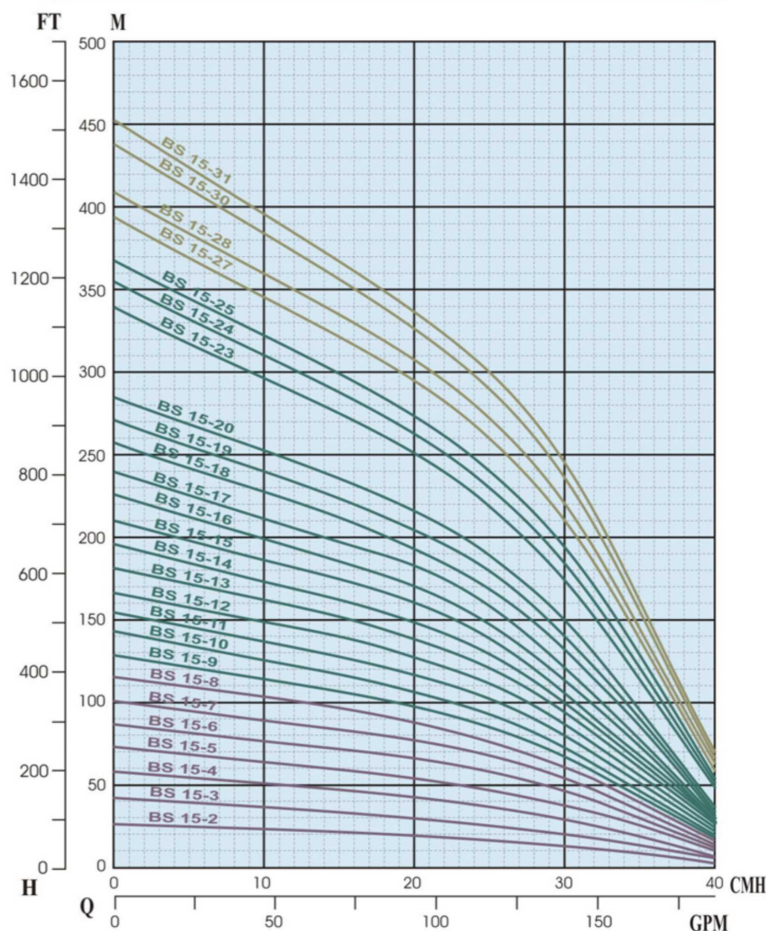
WELL dia.	型 式 TYPE	段 數 STAGES	馬 力 MOTOR		尺 寸 DIMENSION		Head(H): Meter(M) Capacity(C): Gallon/min(GPM)			
							STANDARD		MAXIMUM	
			KW	HP	L	L1	H	C	H	C
6"	BS12-2	2	2.2	3	339	127	17	88	25	120
	BS12-4	4	3.7	5	453	127	38	88	37	120
	BS12-5	5	5.5	7.5	510	127	45	88	65	120
	BS12-6	6	5.5	7.5	567	127	58	88	75	120
	BS12-7	7	7.5	10	624	127	63	88	99	120
	BS12-8	8	7.5	10	681	127	73	88	147	120
	BS12-9	9	9	12.5	738	127	85	88	174	120
	BS12-10	10	9	12.5	795	127	93	88	186	120
	BS12-11	11	11	15	852	127	105	88	197	120
	BS12-12	12	11	15	909	127	115	88	197	120
	BS12-13	13	13	17.5	966	127	125	88	197	120
	BS12-14	14	13	17.5	1023	127	134	88	197	120
8"	BS12-15	15	15	20	1080	127	140	88	207	120
	BS12-16	16	15	20	1137	127	145	88	217	120
	BS12-18	18	15	20	1251	127	155	88	242	155
	BS12-19	19	16.5	22.5	1308	127	162	88	255	155
	BS12-20	20	16.5	22.5	1365	127	174	88	270	155
	BS12-21	21	18.5	25	1422	127	181	88	285	155
	BS12-22	22	18.5	25	1479	127	192	88	305	155
	BS12-23	23	22	30	1536	127	202	88	315	155
	BS12-24	24	22	30	1593	127	212	88	325	155
	BS12-29	29	26	35	1878	127	242	88	382	155
10"	BS12-30	30	26	35	1935	127	254	88	398	155
	BS12-31	31	30	40	1992	127	274	88	409	155



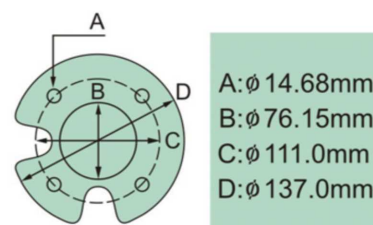
09/2012

6" STAINLESS STEEL SUBMERSIBLE PUMPS FOR DEEP WELLS

PERFORMANCE CURVES



4" – MOTOR



6" – MOTOR



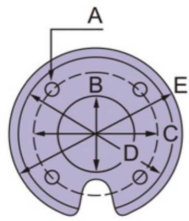
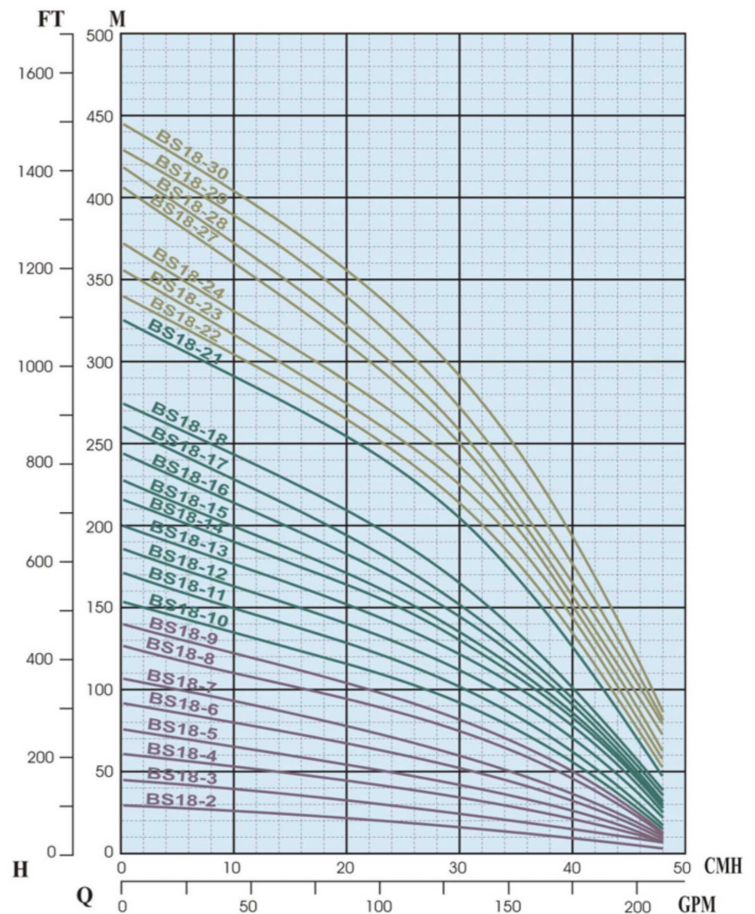
SPECIFICATION

WELL dia.	型 式 TYPE	段 數 STAGES	馬 力 MOTOR		尺 寸 DIMENSION		Head(H): Meter(M) Capacity(C): Gallon/min(GPM)			
							STANDARD		MAXIMUM	
							H	C	H	C
6"	BS15-2	2	2.2	3	339	127	18	100	27	175
	BS15-3	2	3.7	5	396	127	28	100	42	175
	BS15-4	4	5.5	7.5	453	127	40	100	59	175
	BS15-5	5	7.5	10	510	127	51	100	74	175
	BS15-6	6	7.5	10	567	127	63	100	88	175
	BS15-7	7	9	12.5	624	127	73	100	102	175
	BS15-8	8	11	15	681	127	83	100	116	175
8"	BS15-9	9	13	17.5	738	127	93	100	130	175
	BS15-10	10	13	17.5	795	127	101	100	143	175
	BS15-11	11	15	20	852	127	111	100	154	175
	BS15-12	12	15	20	909	127	121	100	168	175
	BS15-13	13	15	20	966	127	131	100	182	175
	BS15-14	14	16.5	22.5	1023	127	141	100	196	175
	BS15-15	15	16.5	22.5	1080	127	151	100	210	175
	BS15-16	16	18.5	25	1137	127	161	100	225	175
	BS15-17	17	18.5	25	1194	127	171	100	240	175
	BS15-18	18	20.5	27.5	1251	127	183	100	257	175
	BS15-19	19	22	30	1308	127	193	100	272	175
	BS15-20	20	22	30	1365	127	203	100	286	175
10"	BS15-23	23	26	35	1536	127	237	100	340	175
	BS15-24	24	26	35	1593	127	247	100	355	175
	BS15-25	25	26	35	1650	127	257	100	369	175
	BS15-27	27	30	40	1764	127	277	100	395	175
	BS15-28	28	30	40	1921	127	289	100	410	175
	BS15-30	30	37.5	50	1935	127	310	100	440	175
	BS15-31	31	37.5	50	1992	127	320	100	454	175

09/2012

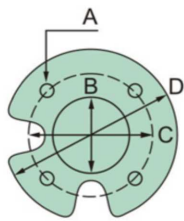
6" STAINLESS STEEL SUBMERSIBLE PUMPS FOR DEEP WELLS

PERFORMANCE CURVES



A: ϕ 10.0mm
B: ϕ 39.0mm
C: ϕ 76.5mm
D: ϕ 87.3mm
E: ϕ 96.0mm

4" - MOTOR



A: ϕ 14.68mm
B: ϕ 76.15mm
C: ϕ 111.0mm
D: ϕ 137.0mm

6" - MOTOR



SPECIFICATION

WELL dia	型 式 TYPE	段 數 STAGES	馬 力 MOTOR		尺 寸 DIMENSION		Head(H): Meter(M) Capacity(C): Gallon/min(GPM)			
			KW	HP	L	L1	STANDARD		MAXIMUM	
							H	C	H	C
6"	BS18-2	2	3	4	348	127	18	118	31	210
	BS18-3	3	3.7	5	396	127	28	118	47	210
	BS18-4	4	5.5	7.5	453	127	38	118	62	210
	BS18-5	5	7.5	10	510	127	48	118	77	210
	BS18-6	6	7.5	10	567	127	58	118	92	210
	BS18-7	7	9	12.5	624	127	68	118	107	210
	BS18-8	8	11	15	681	127	83	118	127	210
	BS18-9	9	11	15	738	127	90	118	143	210
	BS18-10	10	13	17.5	795	127	100	118	155	210
8"	BS18-11	11	15	20	852	127	111	118	172	210
	BS18-12	12	15	20	909	127	122	118	185	210
	BS18-13	13	15	20	966	127	132	118	200	210
	BS18-14	14	18.5	25	1023	127	142	118	216	210
	BS18-15	15	18.5	25	1080	127	149	118	228	210
	BS18-16	16	18.5	25	1137	127	158	118	244	210
	BS18-17	17	22	30	1194	127	164	118	261	210
	BS18-18	18	22	30	1251	127	182	118	276	210
	BS18-21	21	26	35	1422	127	220	118	326	210
	BS18-22	22	30	40	1479	127	231	118	341	210
	BS18-23	23	30	40	1536	127	244	118	355	210
	BS18-24	24	30	40	1593	127	255	118	373	210
10"	BS18-27	27	37	50	1764	127	270	118	407	210
	BS18-28	28	37	50	1821	127	280	118	418	210
	BS18-29	29	37	50	1878	127	296	118	430	210
	BS18-30	30	37	50	1935	127	314	118	445	210

09/2012