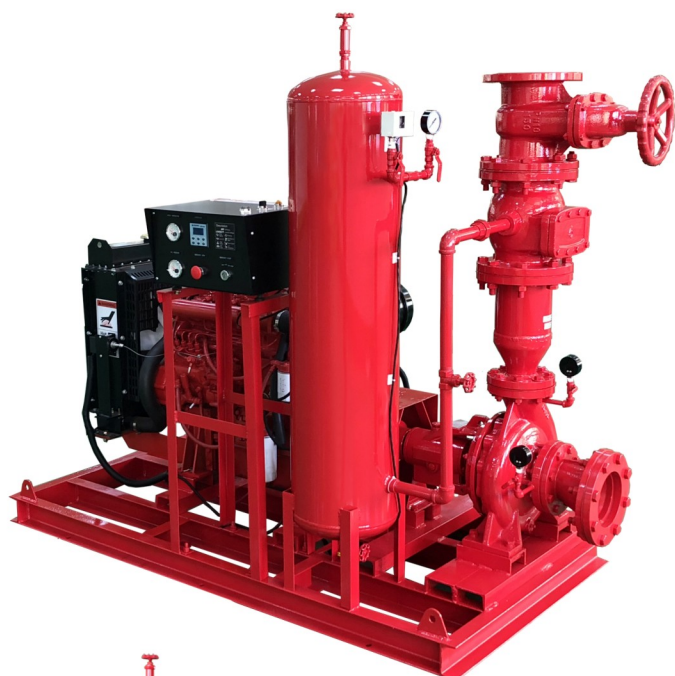


FFE-series Diesel Fire-fighting Pump Set

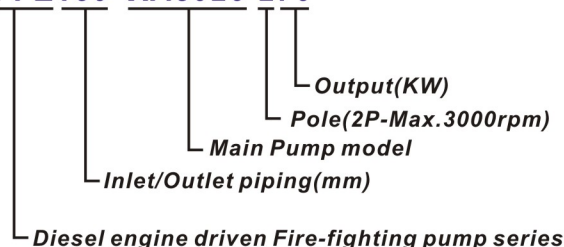


Applications

- Auto water supply and boost water pressure to the fire sprinkler system, fire hydrant, fire foam sprinkler system in the building, shopping mall, hotel, factory, stadium, parking area, station, airport, school, etc.

Model Code

FFE150- XA8026-276



Main Pump Selection

XA-series (DIN24255)

End suction centrifugal pump

- Pump inlet: 2"~5"
- Pump outlet: 1 1/4"~4"
- Head range: 37~97M
- Capacity: 300~4800L/min



Features

- All-in-one design, included pump, diesel engine, digital type control panel, pressure tank, water priming tank (optional), valves, flow meter (optional), battery, fuel tank, silencer, and other accessories. All are incorporated into one auto booster pump set.
- Auto run to boost water pressure for extinguishing the fire while hydrant or sprinkler is opened.
- Standard Diesel engine selection: **KORMAN** made in South Korea. (International brand diesel engines are available upon special request)
- Specifications of KORMAN engine:

Model of Diesel engine	Cyl.	Borex Stroke	Disp.	Max. power		Max. torque		Fuel
	EA	mm	liter	kw	rpm	Nm	rpm	g/kw.h
4KMYP-18	4	85X90	1.81	29	3000	100	2100	≤ 240
4KMYP-30	4	90X105	2.67	42	3000	150	2100	≤ 235
4KMYP-40	4	105X118	4.09	70	3000	260	2100	≤ 232
4KMYP-48	4	108X118	4.32	76	3000	290	2100	≤ 232

KORMAN Engine, Max.3000rpm

Basic Accessories

Diesel Fuel Tank

70~90Liter or other volume



Connected with fuel inlet & return hole of engine

Flexible Joint



Connected on discharge gate valve of pump

Battery



Connected with starting motor of engine

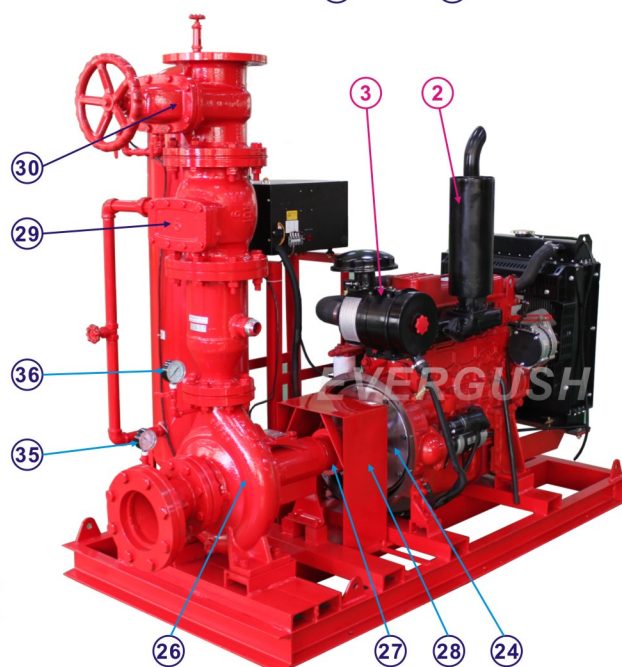
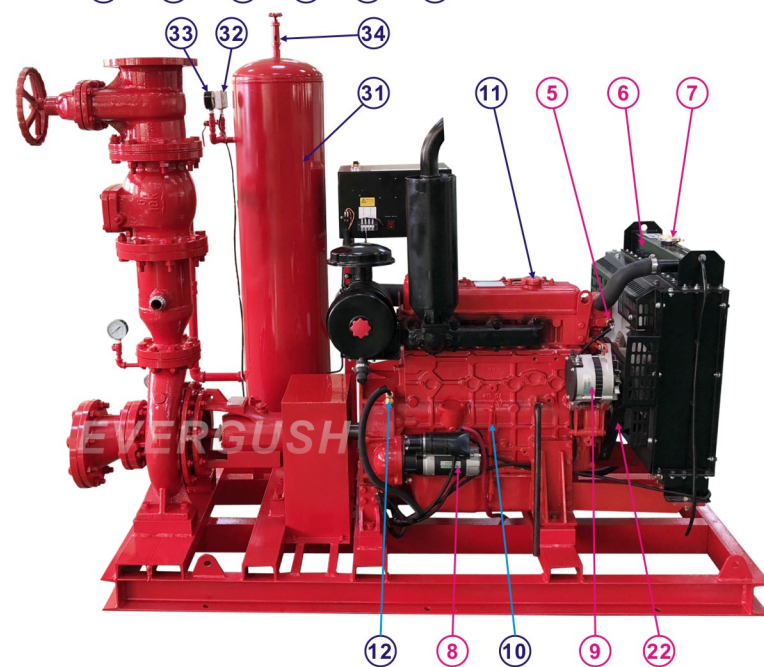
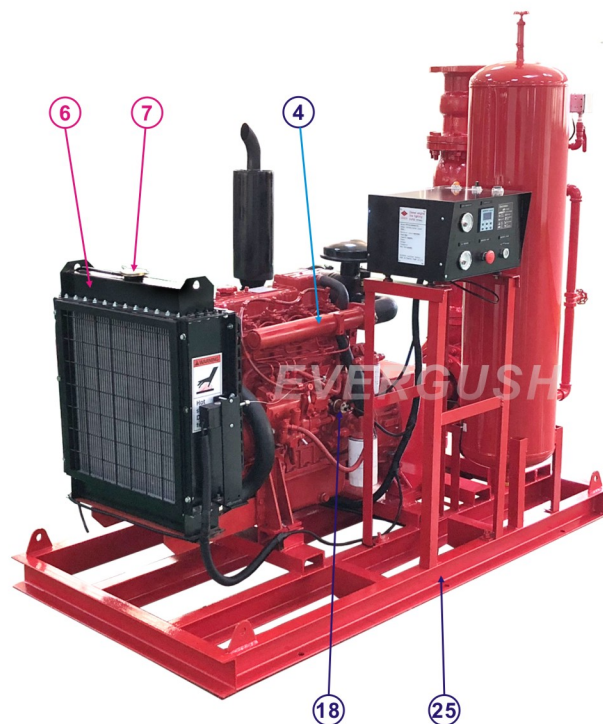
Refer to page.2

FFE-series Diesel Fire-fighting Pump Set



Structure & Main Parts

● **EVERGUSH** Diesel Fire-fighting pump set is all-in-one design, included pump, electric motor, control panel, pressure tank, valves, water priming tank(Optional) and other accessories. All are incorporated into one auto booster pump set package. All-in-one design can save installation space and reduce dispute when doing maintenance.



NO.	Name	NO.	Name	NO.	Name	NO.	Name	NO.	Name	NO.	Name
1	Digital type control panel	7	Radiator cap	13	Lubricant filter	19	Fuel filter	25	Baseplate	31	Pressure vessel
2	Exhaust silencer	8	Starting motor	14	Fuel injection pump	20	Mechanical governor	26	Pump	32	Pressure switch
3	Diesel exhaust purifier	9	Charging alternator	15	Fuel feed pump	21	Breaker	27	Coupling	33	Pressure gauge
4	Intake manifolds	10	Lubricating oil dipstick	16	Fuel inlet hole	22	Belt	28	Coupling cover	34	Safety valve
5	Water temp. sensor	11	Lubricant oil filler cap	17	Fuel return hole	23	Fan	29	Check valve	35	Vacuum gauge
6	Radiator	12	R.P.M transmitter	18	Fuel pressure sensor	24	Flywheel	30	Gate valve	36	Pressure gauge

● Engine Parts: No.1~24

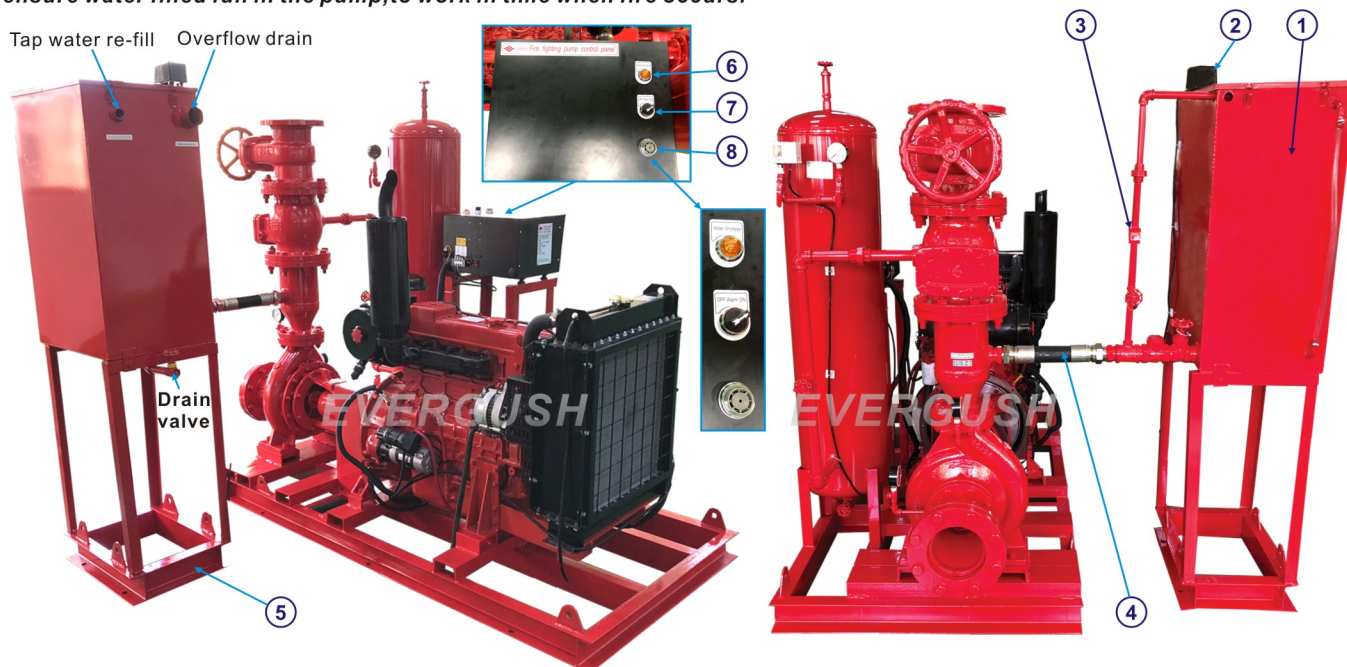
● Pump Parts: No.26~36

FFE-series Diesel Fire-fighting Pump Set



Optional-Additional Priming Water Tank

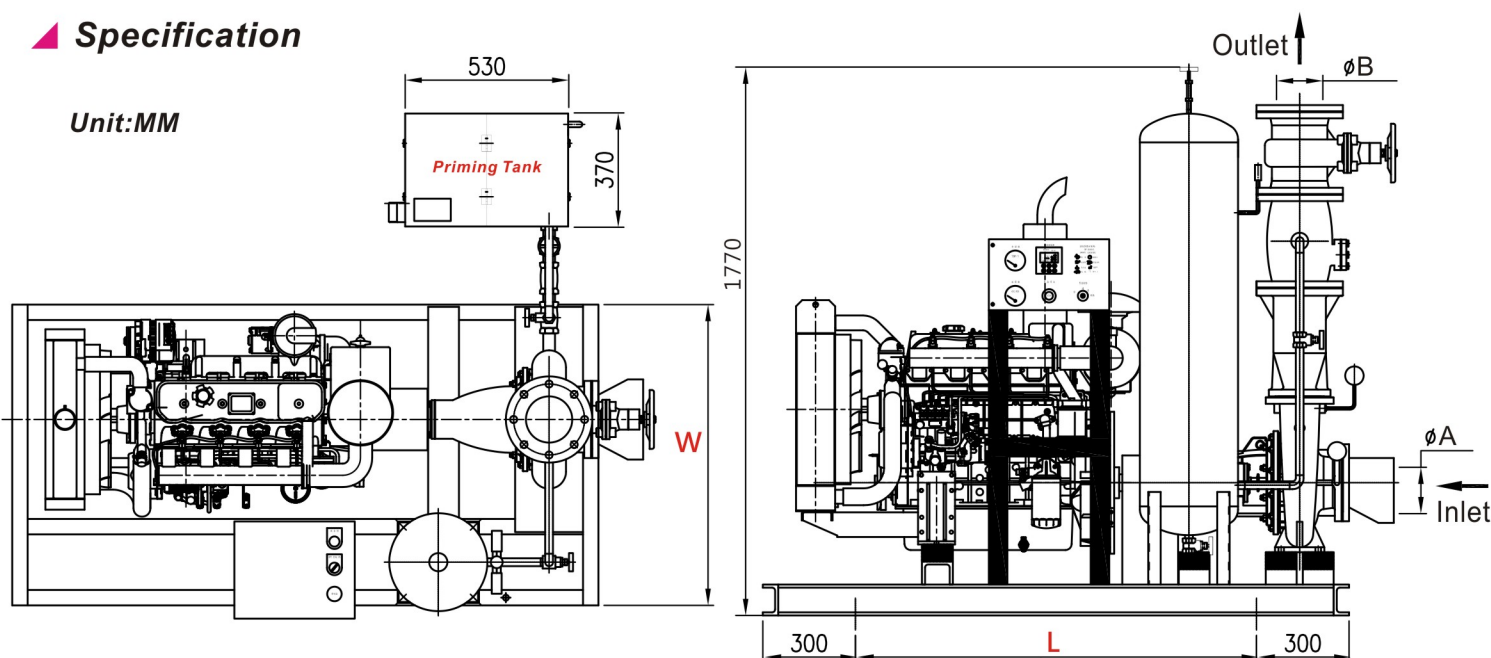
The main function of additional priming water storage tank and water shortage alarm signal is to avoid dry-running the pump and ensure water filled full in the pump, to work in time when fire occurs.



NO.	Name	NO.	Name	NO.	Name	NO.	Name
1	Priming water storage tank	3	Temp. control valve	5	Base for tank	7	Alarm
2	Radar type float switch	4	Flexible hose	6	Water shortage indicator	8	Buzzer

Specification

Unit:MM



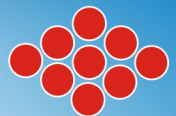
FFE Fire-fighting Pump set (Diesel engine driven)

Model of Fire Pump	Model of engine	Rated Power	Max. Speed	Pre-set Speed	Inlet ØA	Outlet ØB	Impeller dia.	Max. Head	Rated Head	Rated Capacity		Fuel Consumption	Fuel tank Volume	Starting Voltage	Battery	Dimension (unit:mm)	
		KW	RPM	RPM	Inch	Inch	MM	M	M	L/min	GPM	Liter/hr	Liter	DC	AH	L	W
FFE100-XA4026-229	4KMYP-18	29	3000	2850	4"	4"	264	93	83	500	132	7.9	70	12V	120AH	1200	975
FFE100-XA5026-242	4KMYP-30	42	3000	2850	4"	4"	264	96	83	950	251	11.1	70	12V	120AH	1200	975
FFE150-XA6526-270	4KMYP-40	70	3000	2850	6"	6"	264	95	83	1550	410	18.4	90	12V	120AH	1300	975
FFE150-XA8026-276	4KMYP-48	76	3000	2850	6"	6"	264	93	85	1920	507	20	90	12V	120AH	1300	975
Special Specification																	

- Special performance requirement & customized design is available upon request.
- Pump performance will be changed according to different RPM setting.
- Please contact with EVERGUSH distributor or email to us if you need detailed technical data or dimensions for certain model.

FFE-series Diesel Fire-fighting Pump Set

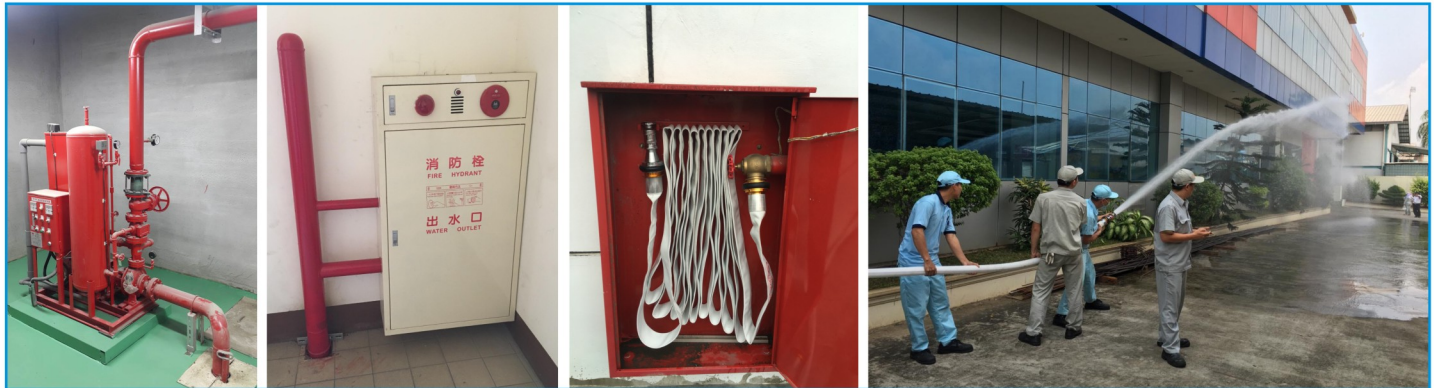
50Hz



EVERGUSH®

▲ Main applications of EVERGUSH Fire-fighting pump

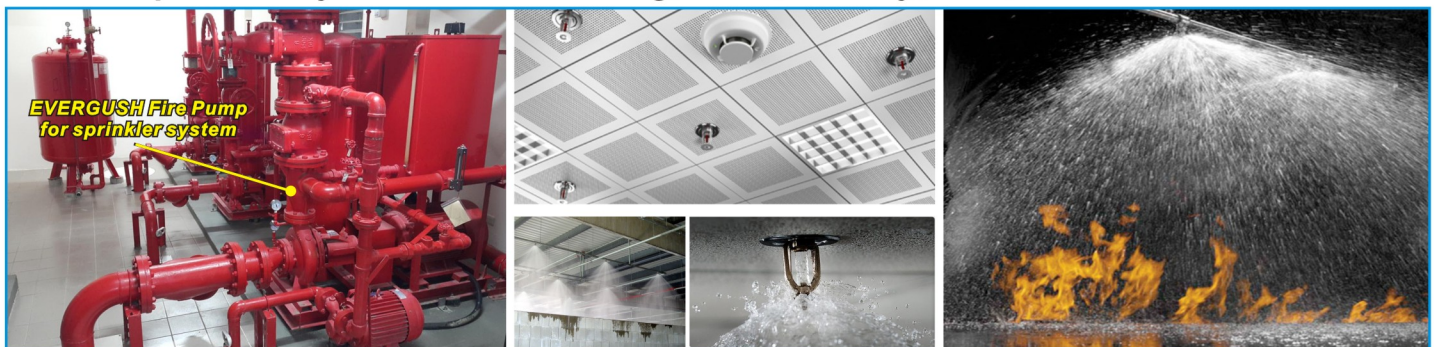
- When fire occurs, it could be too late to put out the fire because fire trucks could be stuck in traffic jam or narrow street. EVERGUSH All-in-one fire-fighting pump set is **the best choice** for you to protect human life, property and safety.
- For **Fire hydrant** in the building, factory, hotel, school, ...etc.



- For **foam sprinkler system** in parking lot of building
Water mixed with foam for extinguishing fire contained gasoline in parking lot



- For **sprinkler system** in the building, hotel, factory, mall, etc.



▲ Remarkable Sales Records

EVERGUSH is TOP 1 Fire-fighting pump maker & brand in Taiwan.

- Taipei MRT (Mass Rapid Transit) Stations.
- Kaohsiung (Mass Rapid Transit) Stations.
- Taiwan High Speed Rail Stations.
- Taiwan Railway Stations.
- Fo Guan Shan Buddha Memorial Center.
- Taipei Arena.
- Taoyuan International Airport.
- Taichung International Airport.
- Kaohsiung International Airport.
- Kaohsiung Software Technology Park.
- Hsinchu Science Park.
- Taichung Science Park.
- Tainan Science Park.
- Formosa Plastics Corporation Plant.
- Exported to Japan, Philippines, Indonesia, Vietnam, China, Myanmar, Saipan island, ...etc.



Taiwan High Speed Rail Station



KAOHSIUNG MRT Station, TAIWAN



Taipei Arena

