



ET200



ET400



ET800

#### Features

1. Built-in microchip control. Automatic power off when no water is detected within 60 seconds, to avoid the motor being burn up.
2. Low operation noise. The supply of water pressure is stable, and the water pressure will not change suddenly when taking a hot bath. The water temperature will not suddenly become cold or hot.
3. All-in-one design, compact size saves installation space.
4. The pump casing structure is made of reinforced plastic steel, and the wetted parts are not rust or create rust water. The motor shaft also will not get stuck easily due to leave unused for a long time.
5. Built-in thermal switch, mainly to avoid frequent ON/OFF or nonstop running which lead to outlet pipeline to burst out by water overheating.
6. If the pump is installed outdoors, it is recommended to install a cover for protection. It can protect electronic parts in the ET series being damaged by heavy rain or direct sunlight which can extend the product life span.

#### Operating Conditions

1. Ambient Temp.: Max. 40°C.
  2. Liquid Temp.: 0~40°C.
  3. Relative humidity: Max. 85%(RH).
  4. Working pressure: Max. 5 bar.
  5. Before starting the pump, make sure that the inlet water pressure cannot be greater than pre-set activation pressure from the factory.
  6. Applicable liquids: drinking water or other liquids that are not corrosive and have characteristics close to clean water. Not suitable for pumping groundwater or hot water which is over 40°C.
- Pre-set activation pressure is adjustable by professional.

Model	Power	Activation Pressure
ET200	1/4HP	1.2 bar
ET400	1/2HP	1.6 bar
ET800	1HP	2.0 bar

#### Applications

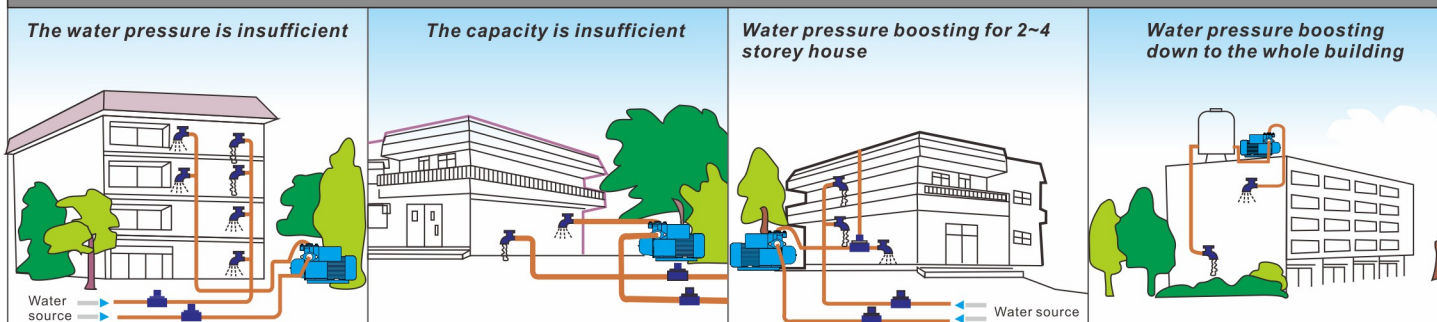
1. Auto boost water pressure to the house, apartment, villa, school, restaurant, school, beauty shop, ...etc.
2. Auto boost water pressure to garden sprinkler, heater, toilet, washing machine, sanitary equipment, ...etc.

#### Motor Spec.

1. Voltage: 1Ø220~240V\*50Hz.
2. Enclosed class: IP54.
3. Insulation: E class.
4. Enclosed Fan-cooled, 2P motor.
5. Built in overload motor protector.

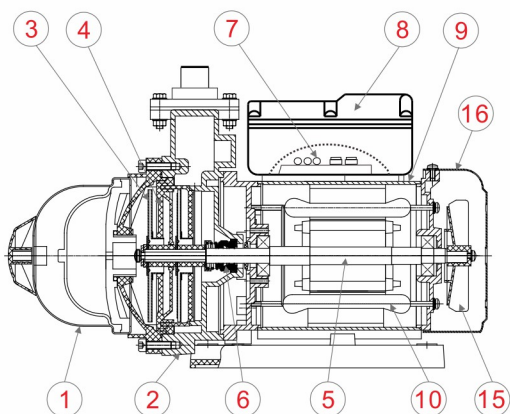


### Installation of ET Pump





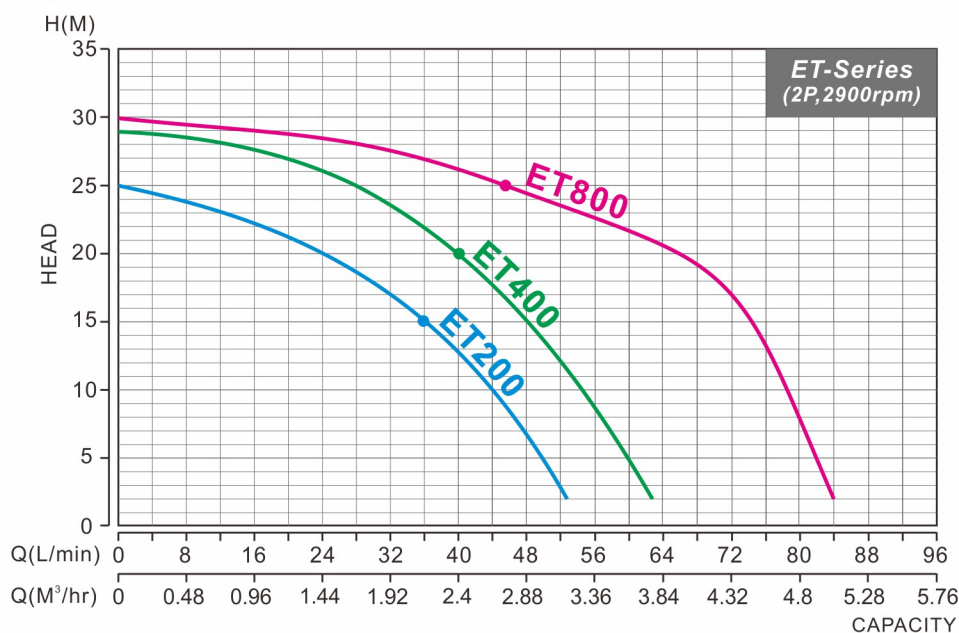
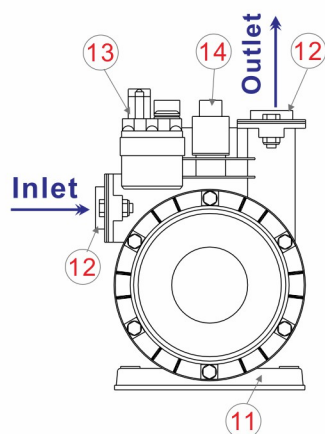
## Main Parts & Materials



- ET200/ET400/ET800 use 3 stages of impellers

NO.	Name	Material	NO.	Name	Material
1	Pressure Tank	SUS304	9	Motor Shell	Iron
2	Pump Casing	NY66+45%FB	10	Motor Coils	Copper
3	Impeller	PC	11	Base	ABS
4	Guide Vane	PC	12	Flanges	SUS304
5	Motor Shaft	SUS410	13	Flow Sensor	————
6	Mech. Seal	CA/CE/NBR	14	Pressure Switch	————
7	CPU Board	Coverd by Expoxy	15	Motor Fan	ABS
8	Terminal Box	ABS	16	Back Cover	ABS

## Performance Curves

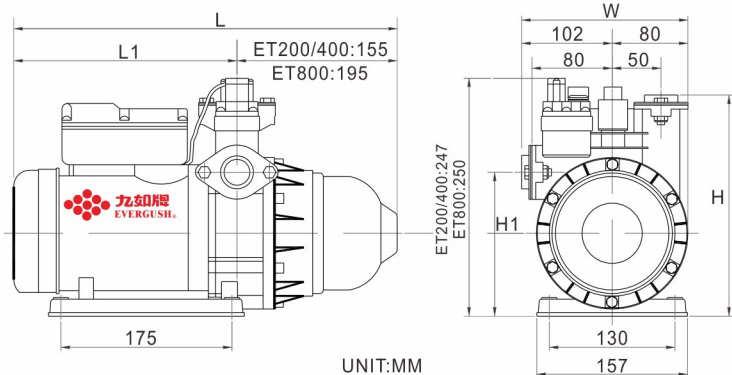


## Specifications

Model	Power		Inlet/Outlet		Pole	Phase	Voltage	Pressure		Rated Head	Rated Flow	Max. Head	Max. Flow
	W	HP	Inch	mm	P	∅	V	On (bar)	Off (bar)	M	L/min	M	L/min
ET200	180	1/4	3/4"	20	2	1	220~240	1.2	2.5	15	36	25	55
ET400	370	1/2	1"	25	2	1	220~240	1.6	2.9	20	40	29	65
ET800	750	1	1"	20	2	1	220~240	2.0	3.0	25	45	30	85

Suction Lift: Max. 4M

## Dimensions



Model	Dimensions (mm)					Net Weight (KG)
	L	L1	W	H	H1	
ET200	405	230	182	225	150	7.1
ET400	420	245	182	225	150	8.3
ET800	450	255	182	225	155	10.6