

Operating Conditions

1. Ambient temperature: Max. 40°C.
2. Liquid temperature: 1~40°C.
3. Working Pressure: Max. 6 Kg/cm².
4. Suction pipes must be in positive pressure, negative pressure unable to work the pump.
5. Discharge pipes must be installed lower than the water tower over 0.5 meters.
6. ETF pump is not suitable for upward pressurization.

Applications

Auto water supply and downward pressurization for the house, apartment, villa, restaurant..., etc.

Features

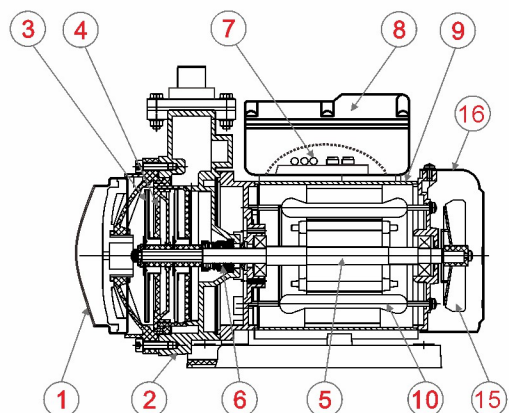
1. Must Install ETF pump below the water tower, to boost water pressure downward. When using water, the pump will run automatically to increase water pressure and supply. When no using water, the pump will auto stop running.
2. Quiet operation uplifts living standard; Compact design for saving space and is suited for many applications.
3. Wet parts are rustless materials to ensure safe and clean using water.
4. Auto dry running shutdown function- The pump will shut off automatically within 30 seconds once water outage occurs, to prevent motor from burnout due to dry running.

Motor Spec.

1. Voltage: Single phase only.
2. Frequency: 50Hz
3. Enclosed class: IP54
4. Insulation: E
5. Enclosed Fan cooled, 2 Pole motor.
6. Built in motor overload protector



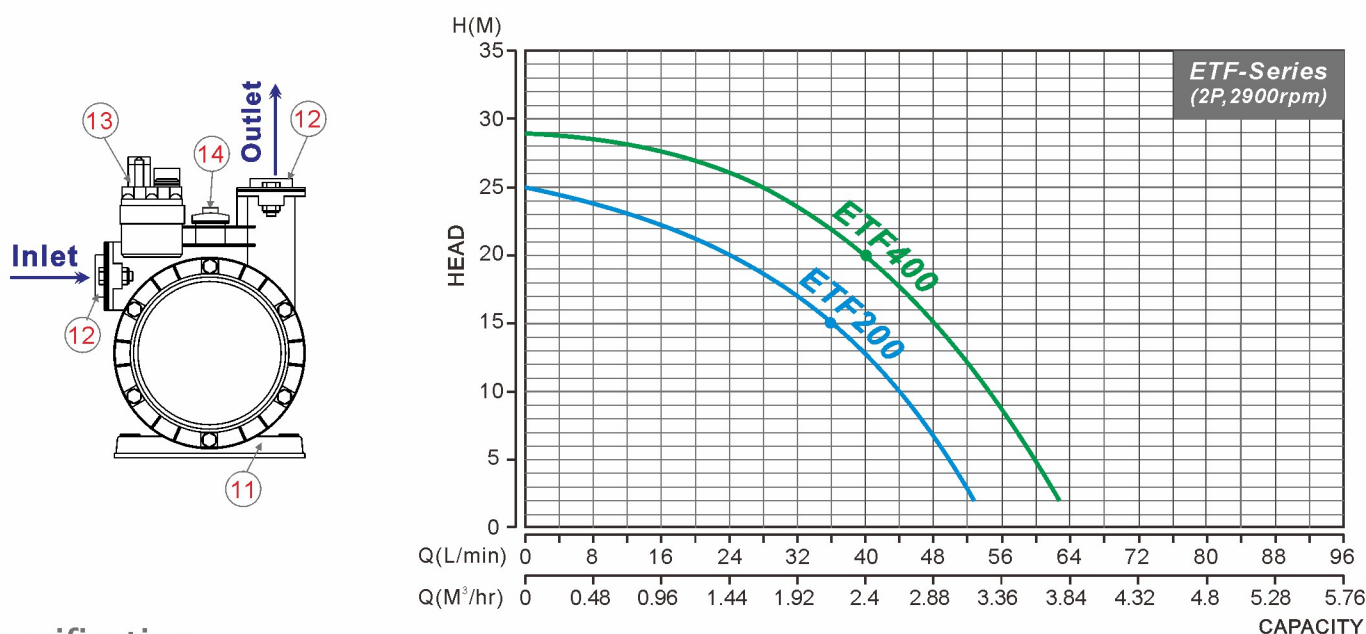
Main Parts & Materials



• ETF200 and ETF400 use 2 stages of impellers

NO.	Name	Material	NO.	Name	Material
1	Front Cover	NY66+45%FB	9	Motor Shell	Iron
2	Pump Casing	NY66+45%FB	10	Motor Coils	Copper
3	Impeller	PC	11	Base	ABS
4	Guide Vane	PC	12	Flanges	SUS304
5	Motor Shaft	SUS410	13	Flow Sensor	—
6	Mech. Seal	CA/CE/NBR	14	Plug	PP
7	CPU Board	Coverd by Exproy	15	Motor Fan	ABS
8	Terminal Box	ABS	16	Back Cover	ABS

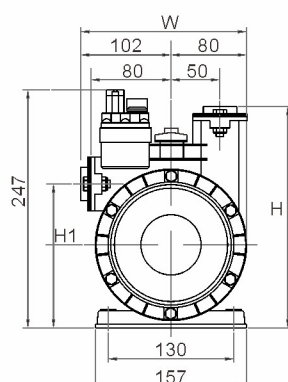
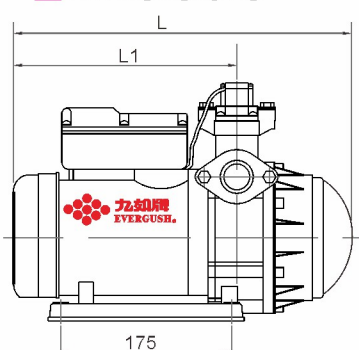
Performance Curves



Specification

Model	Power		Inlet/Outlet		Pole	Phase	Voltage	Inlet Pressure to start pump	Pressure		Rated Head	Rated Flow	Max. Head	Max. Flow
	W	HP	Inch	mm					On (bar)	Off (bar)	M	L/min	M	L/min
ETF200	180	1/4	3/4"	20	2	1	220~240	Min. 0.1	2.5		15	36	25	55
ETF400	370	1/2	1"	25	2	1	220~240	Min. 0.1	2.9		20	40	29	65

Dimensions



Model	Dimensions (mm)					Net Weight (KG)
	L	L1	W	H	H1	
ETF200	335	230	182	225	150	6.6
ETF400	350	245	182	225	150	7.8