



Applications

- ECDLT vertical multistage centrifugal pump impeller, shaft and most of the wetted parts are made of high-quality stainless steel. The Inlet and outlet seats are made of ductile cast iron, with high strength and wear resistance. The mechanical seal is made of hard alloy, which is more durable and wear-resistant. The advantages of ECDLT pump are high lifting head, saving installation space and convenient maintenance. The ECDLT pump can be connected to a control panel equipped with a soft starting controller or related protectors, to reduce water hammer impact or protect pump from overload, dry-running, and phase failure.
- **Water supply:** Transfer water from the underground cistern to the top water storage tank of the high-rise building.
- **Industrial pressure boosting:** Air conditioning and cooling systems, boiler feed and condensation systems, high pressure rinsing systems, automatic car washer.
- **Water treatment:** Filters and reverse osmosis systems, distillation systems, separators.
- **Agriculture irrigation:** Large area irrigation, spray irrigation.

Operating Conditions

- For clean non-flammable and non-explosive liquid, without solid, filamentary and abrasive matter.
- Ambient temperature: Max. 40°C.
- Liquid temperature: Temperature range: -15~70°C.
Hot water range: -15~105°C. (Customized)
- Max. Working pressure: 25~33 bar.
- Output range: 0.37~110KW (0.5~150HP)
- Remarks: If it is used for brewery or petro plants, we strongly recommend to replace standard motor for explosion proof motor.
- Altitude: Max. 1000M.

Motor Spec.

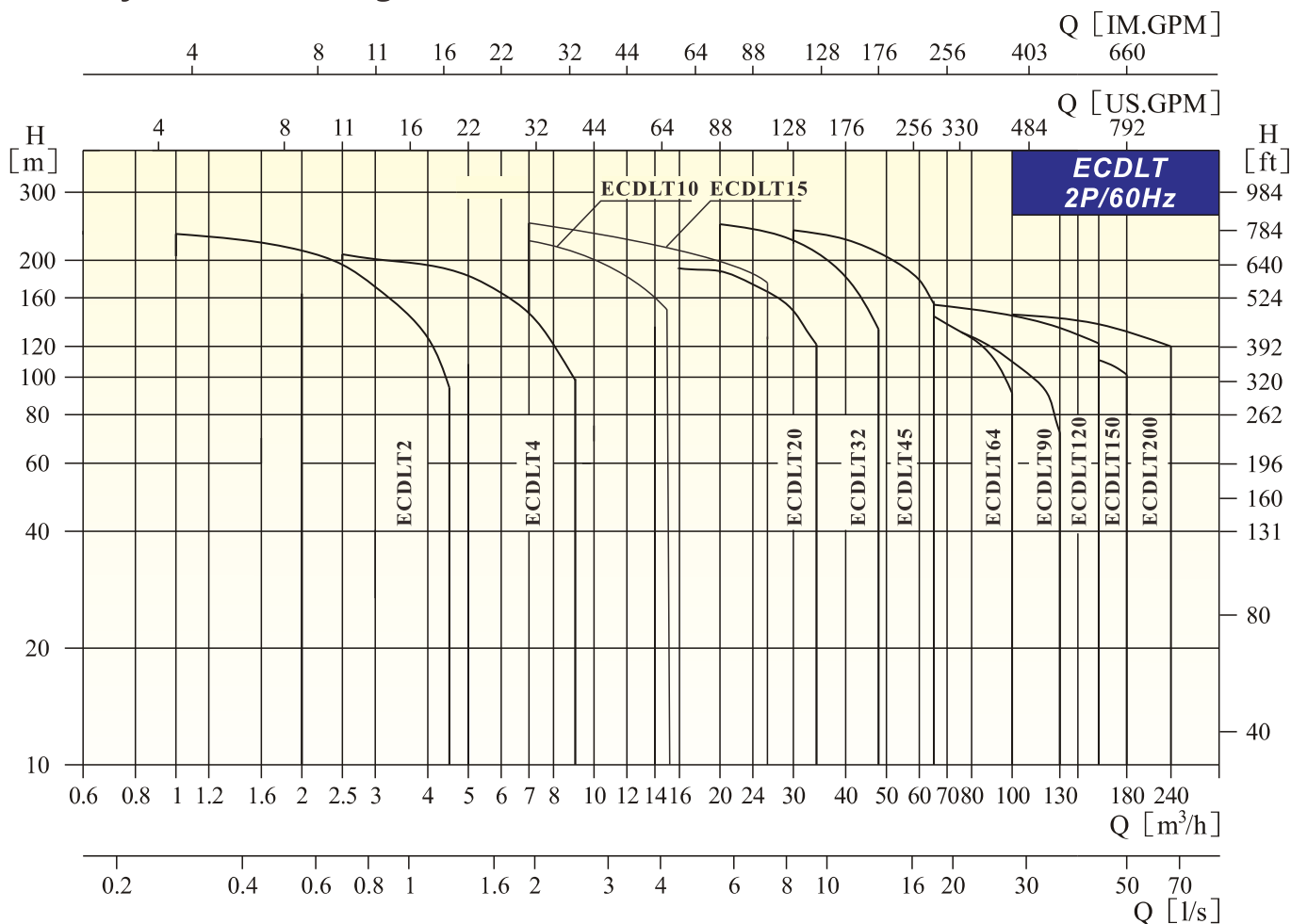
- Totally enclosed fan cooled 2 pole, IEC standard motor.
- Motor range: 2P ; 60Hz.
- Protection IP54, IP55.
- Insulation class F.
- Single phase 220V (0.5~3HP only)
- 3 Phase 220~660V High efficiency (IE2 or IE3) electric motor.

OPTIONAL



ECDLT pump with companion flange

Performance Ranges



Model Code

ECDLT 2,4,10,15,20

ECDLT 4-10

ECDLT pump series

Rated capacity (m³/hr)

Numbers of impeller

ECDLT 32/45/64/90/120/150

ECDLT 32-2-1

ECDLT pump series

Rated capacity (m³/hr)

Numbers of impeller

Numbers of reduced diameter impeller

ECDLT 200

ECDLT 32-2-A-B

ECDLT pump series

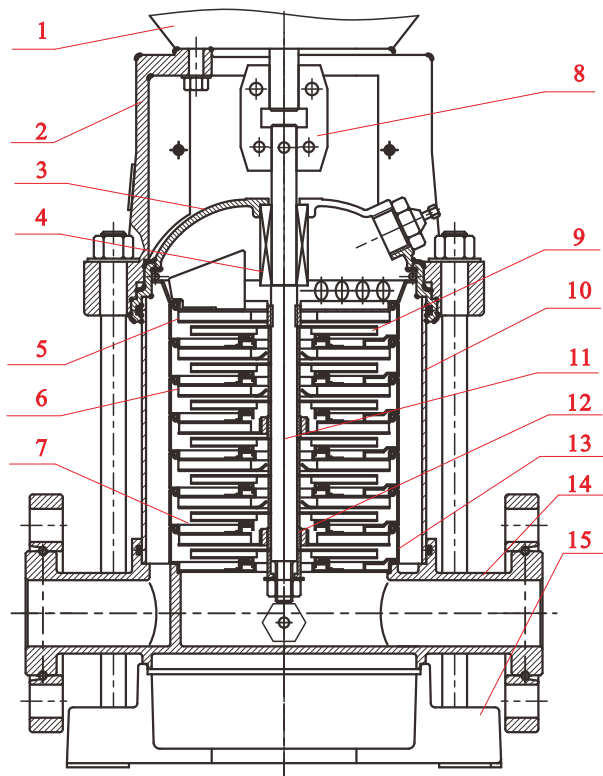
Rated capacity (m³/hr)

Numbers of impeller

Numbers of reduced diameter impeller-A type

Numbers of reduced diameter impeller-B type

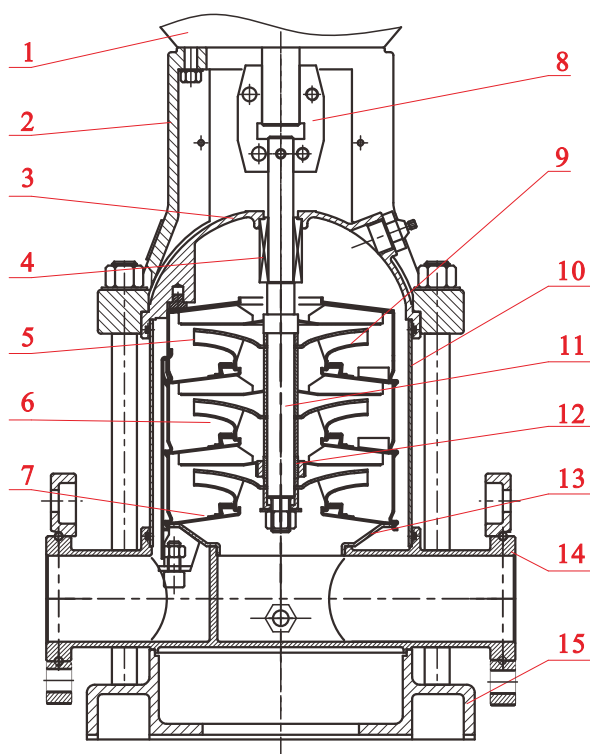
Sectional View



ECDLT2,4

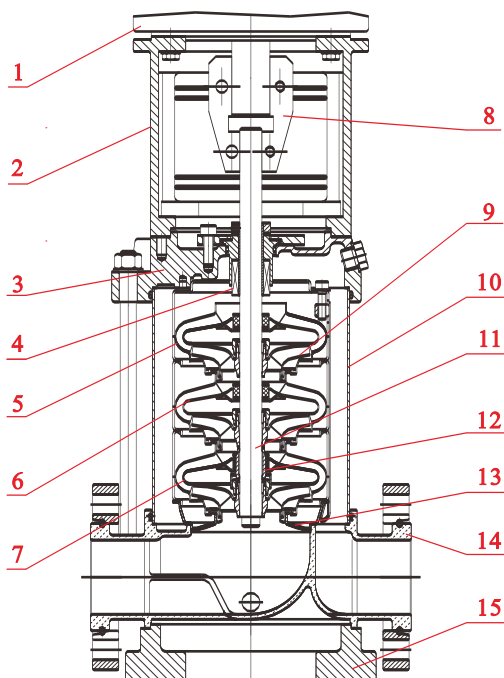
No.	DESCRIPTION	MATERIAL	AISI/ASTM
1	Motor	Assembling unit	
2	Support	Cast iron/ Ductile iron	ASTM25M ASTM70-50-05
3	Seal seat	Stainless steel	AISI 304
4	Mechanical seal	SIC/Graphite/Viton	
5	Outlet guide vane	Stainless steel	AISI 304
6	Guide vane	Stainless steel	AISI304
7	Support guide vane	Stainless steel	AISI304
8	Coupling	Ductile iron	ASTM70-50-05
9	Impeller	Stainless steel	AISI304
10	Shell	Stainless steel	AISI304
11	Pump shaft	Stainless steel	AISI304/ AISI316L
12	Bearing	Tungsten Carbide	
13	Inlet guide vane	Stainless steel	AISI304
14	Inlet & outlet seat	Ductile iron	ASTM25B
15	Seat	Ductile iron	ASTM25B

ECDLT10,15,20



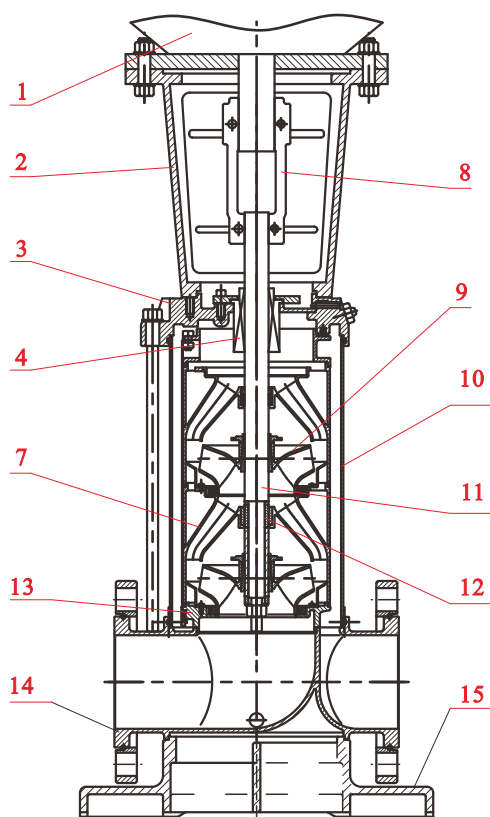
No.	DESCRIPTION	MATERIAL	AISI/ASTM
1	Motor	Assembling unit	
2	Support	Cast iron/ Ductile iron	ASTM25M ASTM70-50-05
3	Seal seat	Stainless steel	AISI 304
4	Mechanical seal	SIC/Graphite/Viton	
5	Outlet guide vane	Stainless steel	AISI 304
6	Guide vane	Stainless steel	AISI304
7	Support guide vane	Stainless steel	AISI304
8	Coupling	Ductile iron	ASTM70-50-05
9	Impeller	Stainless steel	AISI304
10	Shell	Stainless steel	AISI304
11	Pump shaft	Stainless steel	AISI304/ AISI316L
12	Bearing	Tungsten Carbide	
13	Inlet guide vane	Stainless steel	AISI304
14	Inlet & outlet seat	Ductile iron	ASTM25B
15	Seat	Ductile iron	ASTM25B

Sectional View



ECDLT32,45,64,90

No.	DESCRIPTION	MATERIAL	AISI/ASTM
1	Motor	Assembling unit	
2	Support	Cast iron/ Ductile iron	ASTM25M
3	Seal seat	Stainless steel	AISI 304
4	Mechanical seal	SIC/Graphite/Viton	
5	Outlet guide vane	Stainless steel	AISI 304
6	Guide vane	Stainless steel	AISI304
7	Support guide vane	Stainless steel	AISI304
8	Coupling	Ductile iron	ASTM70-50-05
9	Impeller	Stainless steel	AISI304
10	Shell	Stainless steel	AISI304
11	Pump shaft	Stainless steel	AISI304 AISI316L / AISI431
12	Bearing	Tungsten Carbide	
13	Inlet guide vane	Stainless steel	AISI304
14	Inlet & outlet seat	Ductile iron	ASTM25B
15	Seat	Ductile iron	ASTM25B



ECDLT120, 150, 200

No.	DESCRIPTION	MATERIAL	AISI/ASTM
1	Motor	Assembling unit	
2	Support	Cast iron/ Ductile iron	ASTM25M ASTM70-50-05
3	Seal seat	Stainless steel	AISI 304
4	Mechanical seal	SIC/Graphite/Viton	
7	Support guide vane	Stainless steel	AISI304
8	Coupling	Ductile iron	ASTM70-50-05
9	Impeller	Stainless steel	AISI304
10	Shell	Stainless steel	AISI304
11	Pump shaft	Stainless steel	AISI304 AISI316L / AISI431
12	Bearing	Tungsten Carbide	
13	Inlet guide vane	Stainless steel	AISI304
14	Inlet & outlet seat	Ductile iron	ASTM70-50-05
15	Seat	Ductile iron	ASTM70-50-05

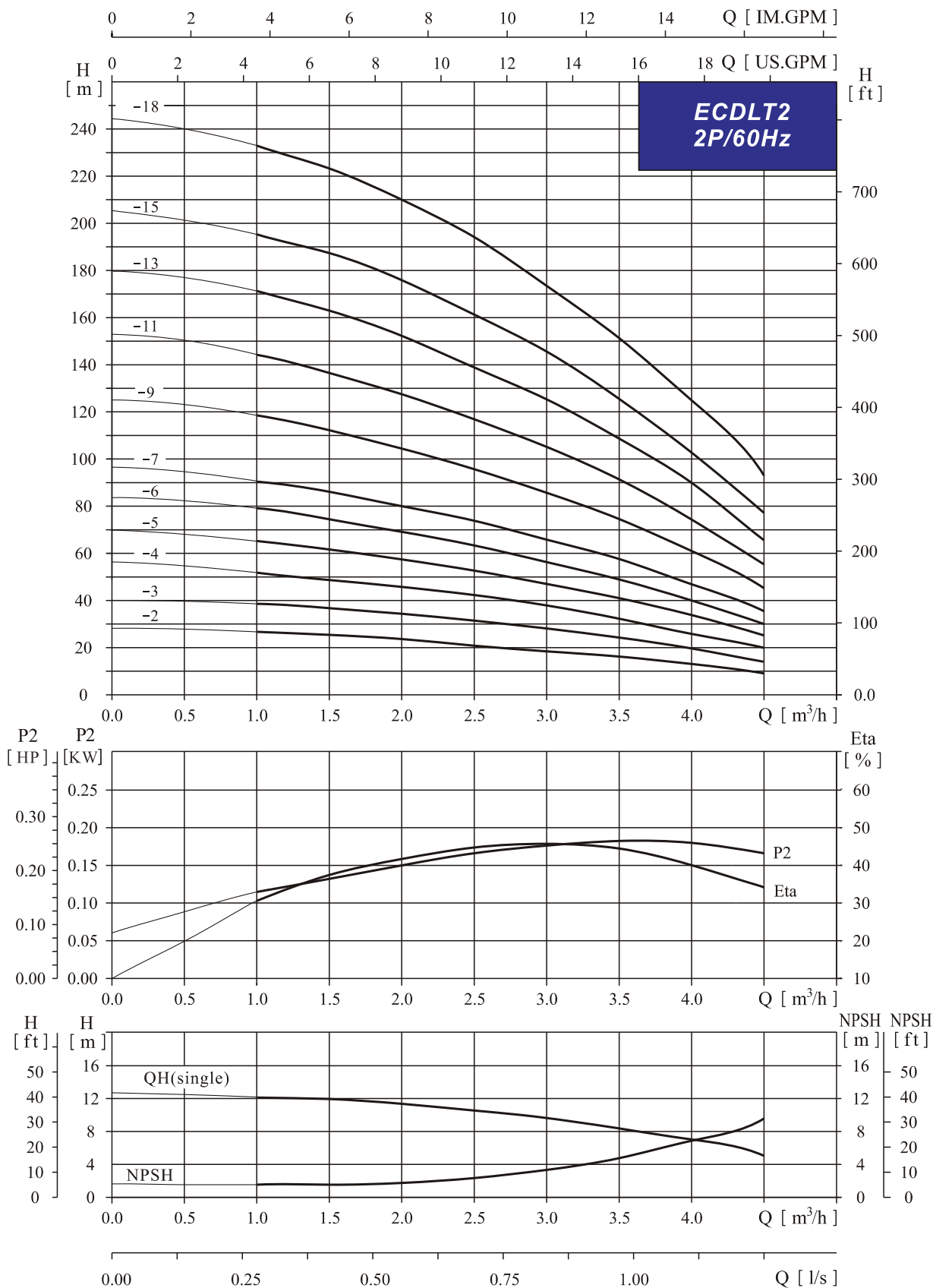
▲ Product Ranges

SCOPE	ECDLT2	ECDLT4	ECDLT10	ECDLT15	ECDLT20
Rated capacity [m³/h]	2	4	10	15	20
Rated capacity [l/s]	0.56	1.1	2.8	4.1	5.6
Capacity scope [m³/h]	1-4.5	2.5-8	7-15	9-26	12-34
Capacity scope [l/s]	0.28-1.25	0.7-2.2	1.9-4.1	2.5-7.2	3.3-9.4
Max. pressure [bar]	23.5	21	25	24	20
Motor power [kW]	0.55-4	0.75-5.5	1.5-11	1.5-18.5	2.2-18.5
Temp. scope [°C]	Standard: 2~90°C				
efficiency [%]	46	57	70	73	69
Flange DIN	DN25	DN32	DN40	DN50	DN50
Pipe thread	R ₁ 1 $\frac{1}{4}$ "	R ₁ 1 $\frac{1}{4}$ "	R ₁ 2"	R ₁ 2"	R ₁ 2"
Cutting ferrule joint	DN32	DN32	DN50	DN50	DN50

SCOPE	ECDLT32	ECDLT45	ECDLT64	ECDLT90	ECDLT120	ECDLT150	ECDLT200
Rated capacity [m³/h]	32	45	64	90	120	150	200
Rated capacity [l/s]	8.9	12.5	17.8	25	33	41.6	55.6
Capacity scope [m³/h]	20-48	30-65	40-100	60-130	60-160	80-180	100-240
Capacity scope [l/s]	5.5-13.3	8.3-18	11.1-27.7	16.7-36.1	16.7-44.4	22-50	27.8-66.7
Max. pressure [bar]	25	26	18	15	15	14	15
Motor power [kW]	3-30	5.5-45	7.5-45	11-45	18.5-75	15-75	30-110
Temp. scope [°C]	Standard: 2~90°C						
Efficiency [%]	73	75	76	77	74	73	78
Flange DIN	DN65	DN80	DN100	DN100	DN125	DN125	DN150

ECDLT2 Technical Data

Performance Curves

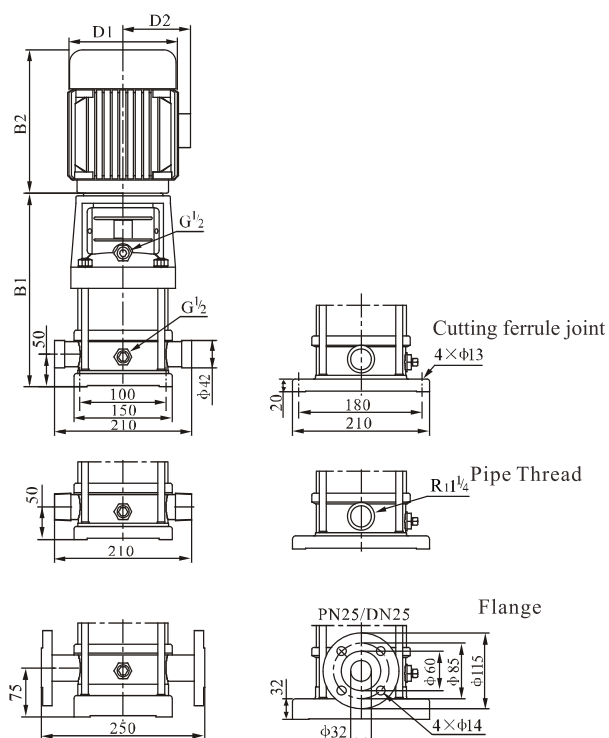


ECDLT2 Technical Data

Performance table

Model	Power		Q (m ³ /h)	1.0	1.5	2.0	2.5	3	3.5	4	4.5
	(KW)	(HP)									
ECDLT2-2	0.55	0.75	H (m)	26	24	22	21	18	16	12	9
ECDLT2-3	0.75	1.0		39	36	33	31	27	24	19	15
ECDLT2-4	1.1	1.5		52	48	45	42	36	32	26	20
ECDLT2-5	1.1	1.5		65	60	57	52	46	41	32	25
ECDLT2-6	1.1	1.5		78	74	69	63	56	49	40	30
ECDLT2-7	1.5	2.0		91	86	81	74	66	57	47	35
ECDLT2-9	2.2	3.0		117	111	104	95	86	75	61	45
ECDLT2-11	2.2	3.0		143	136	128	116	104	90	75	56
ECDLT2-13	3.0	4.0		171	163	152	139	126	108	90	66
ECDLT2-15	3.0	4.0		195	186	176	160	142	125	103	77
ECDLT2-18	4.0	5.5		234	228	212	195	171	151	126	94

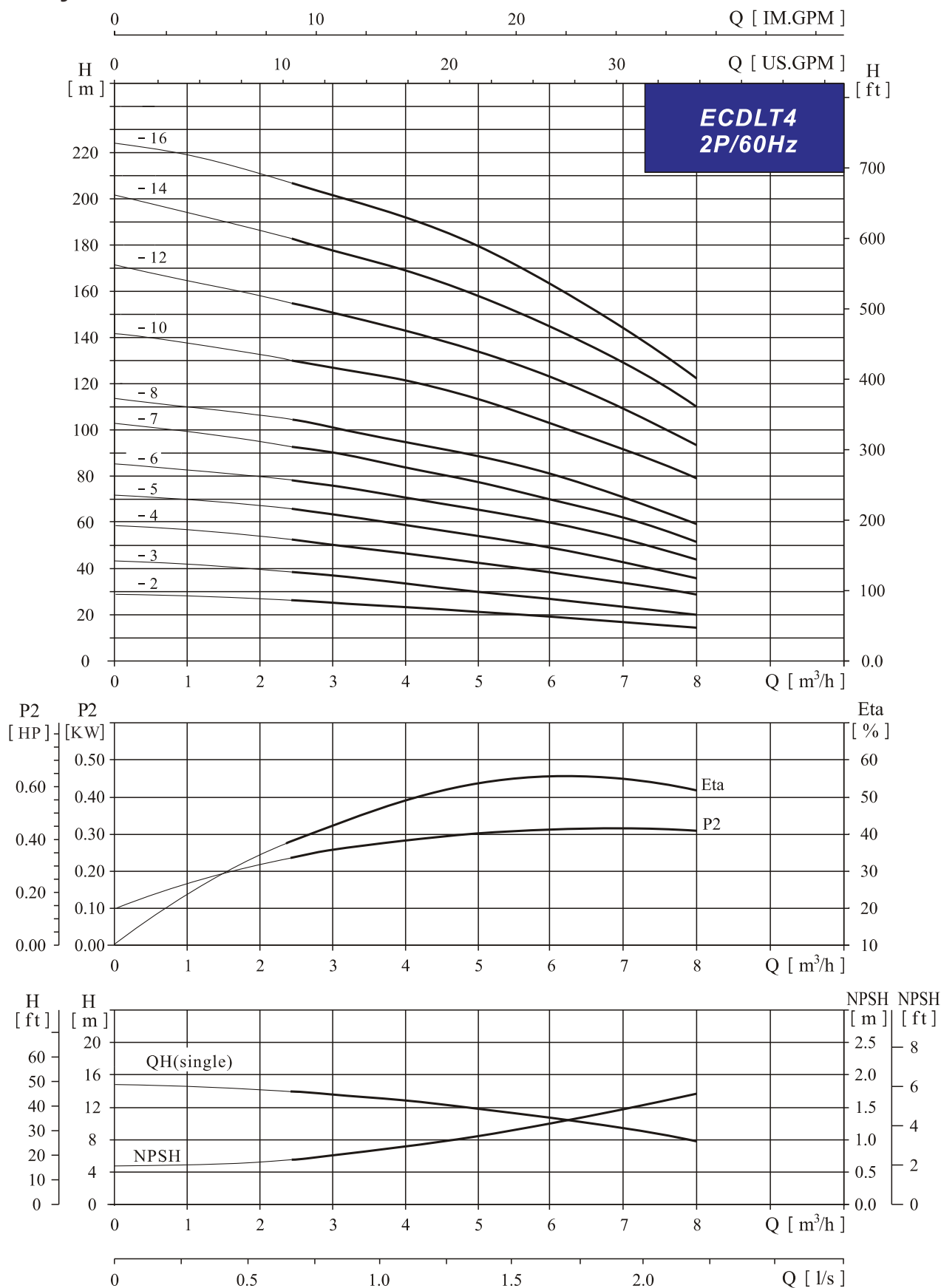
Dimensions & Weights



Model	dimension (mm)					weight (kg)
	B1	B2	B1+B2	D1	D2	
ECDLT2-2	258	210	468	148	117	21
ECDLT2-3	286	245	531	170	142	24
ECDLT2-4	304	245	549	170	142	25
ECDLT2-5	322	245	567	170	142	26
ECDLT2-6	340	245	585	170	142	26
ECDLT2-7	368	290	658	190	155	32
ECDLT2-9	404	290	694	190	155	36
ECDLT2-11	440	290	730	190	155	37
ECDLT2-13	486	315	801	197	165	44
ECDLT2-15	522	315	837	197	165	45
ECDLT2-18	576	335	911	230	188	54

ECDLT4 Technical Data

Performance Curves

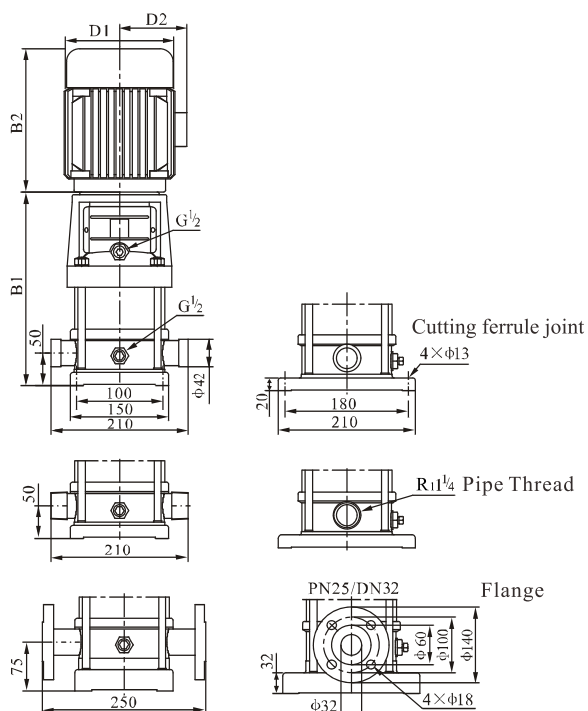


ECDLT4 Technical Data

Performance table

Model	Power		Q (m ³ /h)	2.5	3.0	4.0	5.0	6.0	7.0	8.0
	(KW)	(HP)								
ECDLT4-2	0.75	1	H (m)	26	25	23	21	19	16	14
ECDLT4-3	1.1	1.5		39	38	36	32	28	24	17
ECDLT4-4	1.5	2.0		52	50	48	44	38	35	31
ECDLT4-5	2.2	3.0		65	62	60	55	49	44	39
ECDLT4-6	2.2	3.0		78	75	72	67	59	54	17
ECDLT4-7	3.0	4.0		92	88	84	78	69	62	55
ECDLT4-8	3.0	4.0		104	100	95	90	79	72	63
ECDLT4-10	4.0	5.5		130	125	120	113	102	90	74
ECDLT4-12	4.0	5.5		156	150	145	136	122	109	96
ECDLT4-14	5.5	7.5		182	176	170	159	145	129	112
ECDLT4-16	5.5	7.5		207	201	196	183	165	146	128

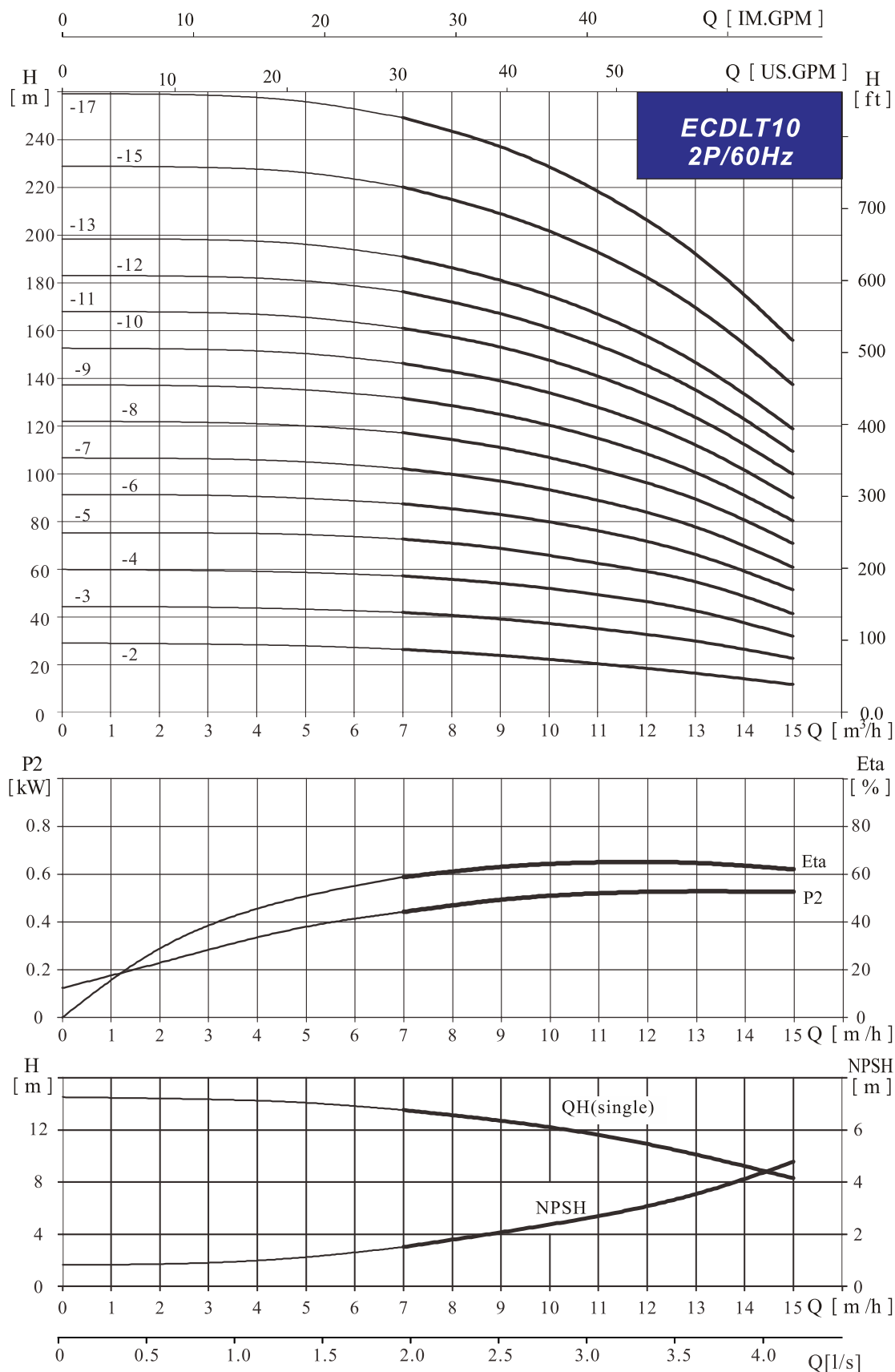
Dimensions & Weights



Model	dimension (mm)					weight (kg)
	B1	B2	B1+B2	D1	D2	
ECDLT4-2	286	245	531	170	142	24
ECDLT4-3	313	245	558	170	142	25
ECDLT4-4	350	290	640	190	155	31
ECDLT4-5	376	290	667	190	155	34
ECDLT4-6	404	290	694	190	155	35
ECDLT4-7	441	315	756	197	165	42
ECDLT4-8	468	315	783	197	165	42
ECDLT4-10	522	335	857	230	188	51
ECDLT4-12	576	335	911	230	188	52
ECDLT4-14	650	430	1080	260	208	64
ECDLT4-16	704	430	1134	260	208	66

ECDLT10 Technical Data

Performance Curves

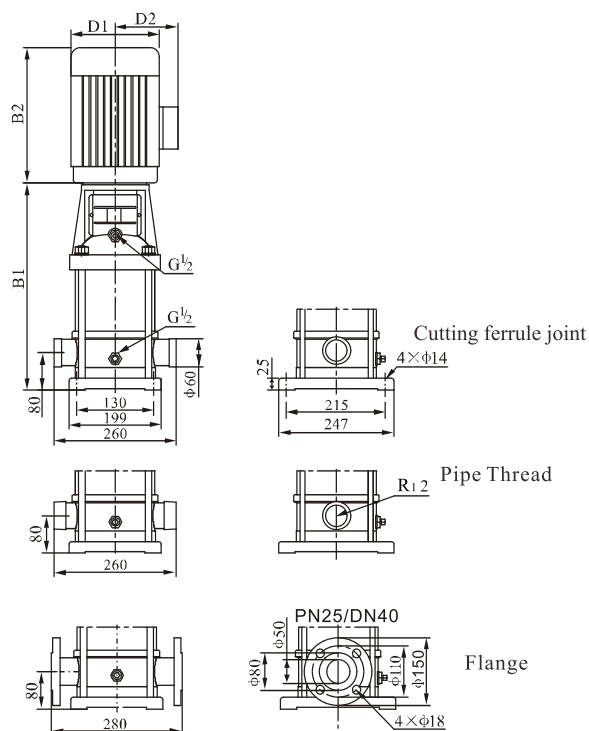


ECDLT10 Technical Data

Performance table

Model	Power		Q (m ³ /h)	7.0	9.0	10	11	12	13	15
	(KW)	(HP)								
ECDLT10-2	1.5	2.0	H (m)	26.5	24	22	20.5	19	16.5	12
ECDLT10-3	2.2	3.0		42	39.5	38	35	33	30	23
ECDLT10-4	3.0	4.0		57.5	54	52.5	49.5	46	43	32
ECDLT10-5	3.0	4.0		72.5	69	66.5	62.5	59	55	41.5
ECDLT10-6	4.0	5.5		87.5	83	80	76	71.5	66.5	51.5
ECDLT10-7	5.5	7.5		102.5	97	93.5	89	84	78	61
ECDLT10-8	5.5	7.5		117.5	111	107	102	96	89.5	71
ECDLT10-9	5.5	7.5		132	125	120.5	115	108	101	80.5
ECDLT10-10	7.5	10		146.5	139	134	128	120	112.5	90
ECDLT10-11	7.5	10		161.5	153	147.5	141	132	124	100
ECDLT10-12	7.5	10		176.5	167	161	154	144	135.5	109.5
ECDLT10-13	11	15		191.5	181	175	167	156	147	119
ECDLT10-15	11	15		220.5	209	202	193	180	170	137.5
ECDLT10-17	11	15		249.5	237	229	218.5	204	192.5	156

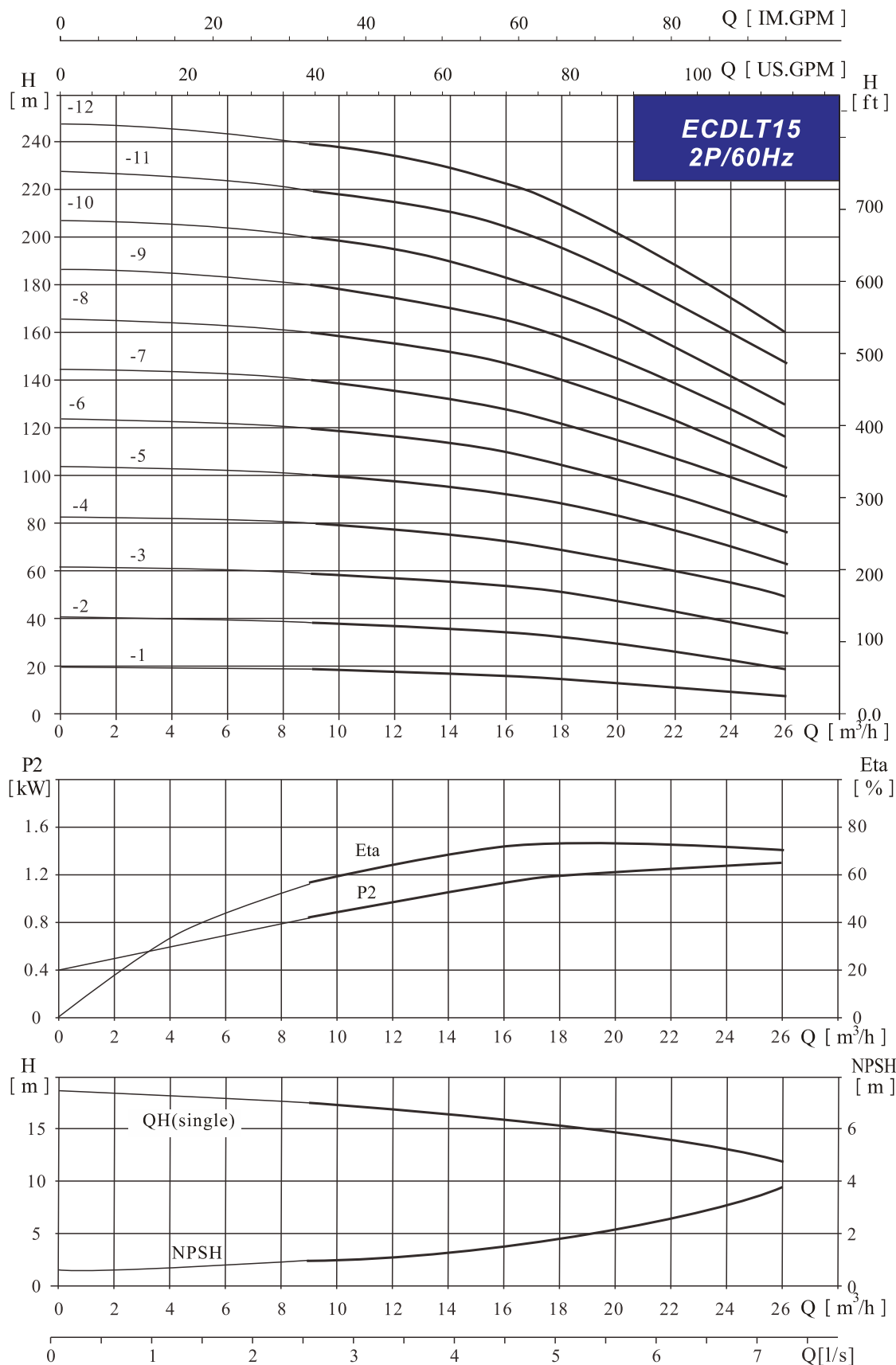
Dimensions & Weights



Model	dimension (mm)					weight (kg)
	B1	B2	B1+B2	D1	D2	
ECDLT10-2	357	310	667	190	155	39
ECDLT10-3	387	310	697	190	155	42
ECDLT10-4	427	350	777	197	165	49
ECDLT10-5	457	350	807	197	165	49
ECDLT10-6	487	360	847	230	185	59
ECDLT10-7	537	400	937	260	210	76
ECDLT10-8	567	400	967	260	210	76
ECDLT10-9	597	400	997	260	210	77
ECDLT10-10	627	400	1027	260	210	87
ECDLT10-11	657	400	1057	260	210	87
ECDLT10-12	687	400	1087	260	210	88
ECDLT10-13	805	510	1315	330	255	142
ECDLT10-15	865	510	1375	330	255	143
ECDLT10-17	925	510	1435	330	255	144

ECDLT15 Technical Data

Performance Curves

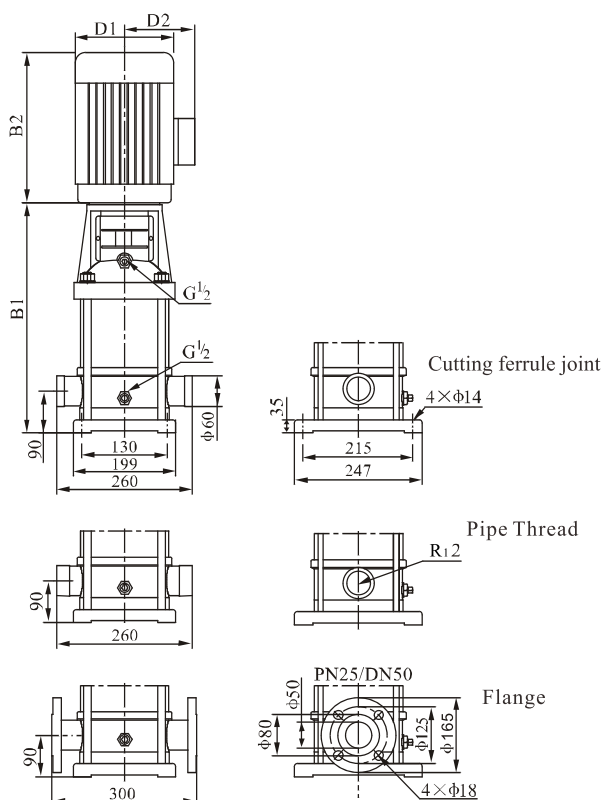


ECDLT15 Technical Data

Performance table

Model	Power		Q (m ³ /h)	9.0	11	13	15	17	19	21	24	26
	(KW)	(HP)										
ECDLT15-1	1.5	2	H (m)	19	18	17	16	15	13	12	10	7
ECDLT15-2	3.0	4.0		38	37	36	35	33	30	28	23	20
ECDLT15-3	4.0	5.5		58	57	55	54	52	49	45	39	34
ECDLT15-4	5.5	7.5		79	77	76	74	72	68	64	57	51
ECDLT15-5	7.5	10		99	96	95	93	90	85	80	71	64
ECDLT15-6	11	15		119	116	114	112	108	102	97	86	79
ECDLT15-7	11	15		139	135	134	130	126	120	114	100	93
ECDLT15-8	11	15		159	156	153	149	145	137	130	116	106
ECDLT15-9	15	20		179	175	172	168	162	154	146	130	120
ECDLT15-10	15	20		199	195	191	187	181	172	163	145	133
ECDLT15-11	18.5	25		218	214	210	205	199	190	179	160	147
ECDLT15-12	18.5	25		238	234	230	224	217	208	196	175	160

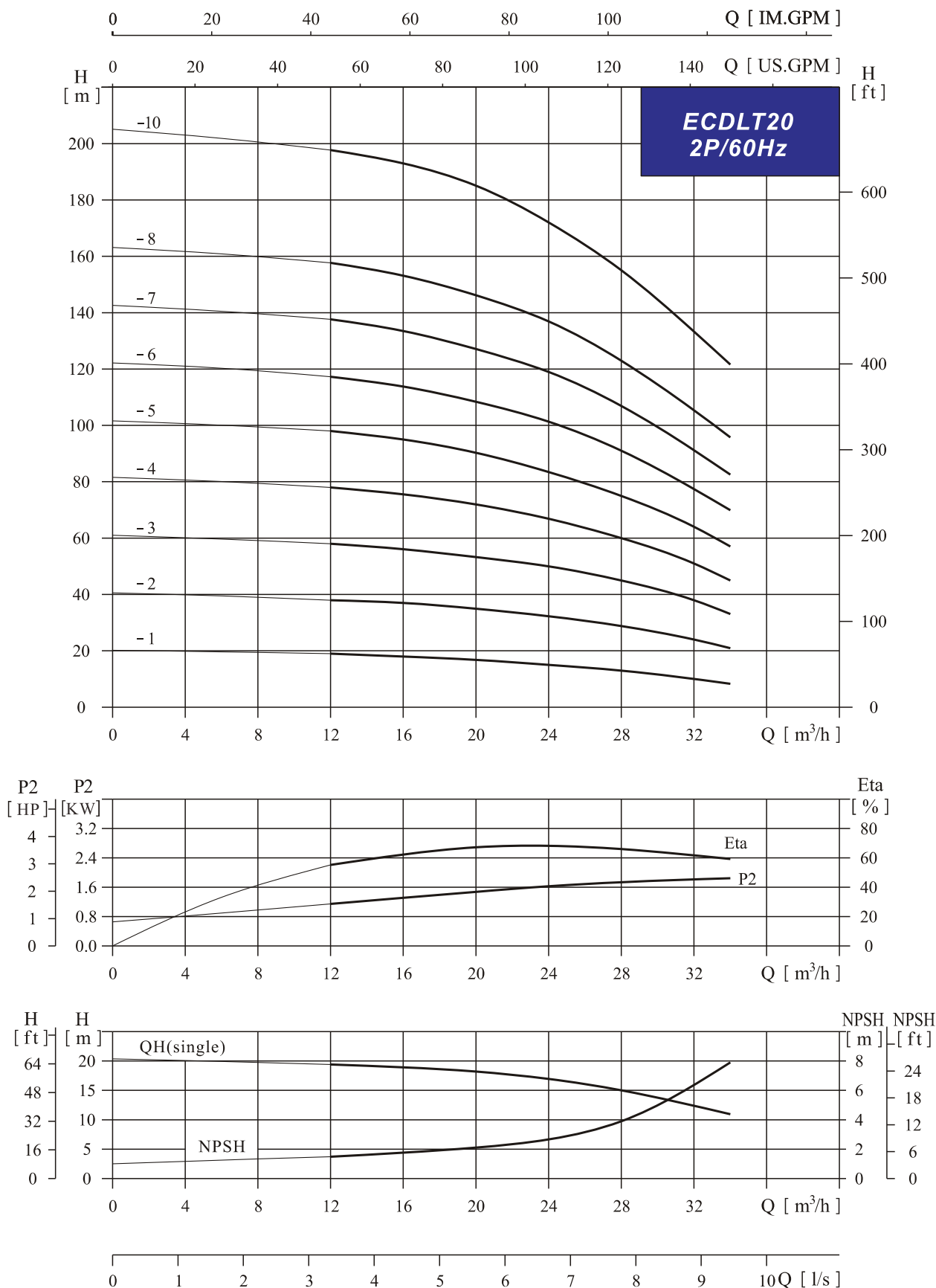
Dimensions & Weights



Model	dimension (mm)					weight (kg)
	B1	B2	B1+B2	D1	D2	
ECDLT15-1	397	310	707	190	155	36
ECDLT15-2	452	350	802	197	165	48
ECDLT15-3	497	360	857	230	185	57
ECDLT15-4	562	400	962	260	210	74
ECDLT15-5	607	400	1007	260	210	82
ECDLT15-6	740	510	1250	330	255	155
ECDLT15-7	785	510	1295	330	255	155
ECDLT15-8	830	510	1340	330	255	156
ECDLT15-9	875	510	1385	330	255	170
ECDLT15-10	920	510	1430	330	255	171
ECDLT15-11	965	560	1525	330	255	192
ECDLT15-12	1010	560	1570	330	255	192

ECDLT20 Technical Data

Performance Curves

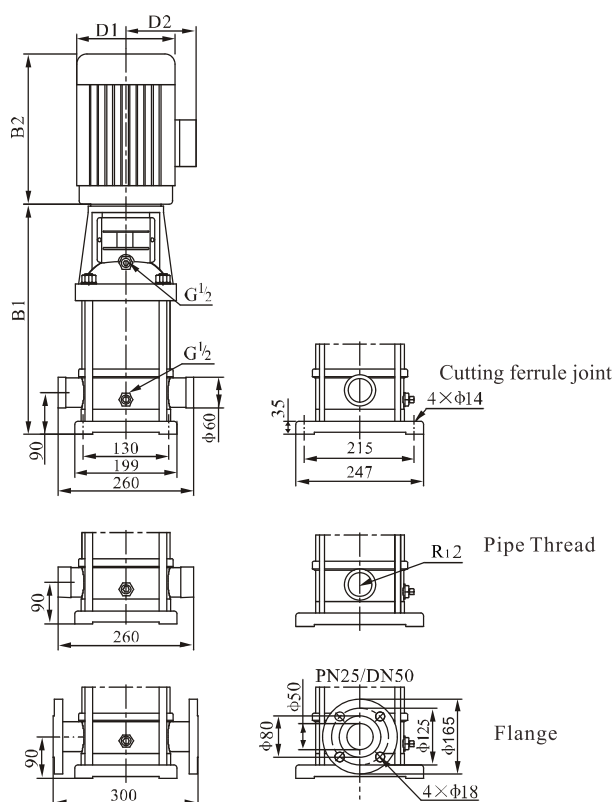


ECDLT20 Technical Data

Performance table

Model	Power		Q (m ³ /h)	12	16	20	24	28	32	34
	(KW)	(HP)								
ECDLT20-1	2.2	3.0	H (m)	19	18	17	15	13	10	8.5
ECDLT20-2	4.0	5.5		38	37	35	32	29	24	21
ECDLT20-3	5.5	7.5		58	56	53	50	45	38	33
ECDLT20-4	7.5	10		78	75	72	67	60	51	45
ECDLT20-5	11	15		98	94	90	85	75	64	57
ECDLT20-6	11	15		118	113	108	102	91	77	70
ECDLT20-7	15	20		138	133	127	119	107	91	83
ECDLT20-8	15	20		158	153	146	137	123	105	96
ECDLT20-10	18.5	25		198	193	185	172	155	133	122

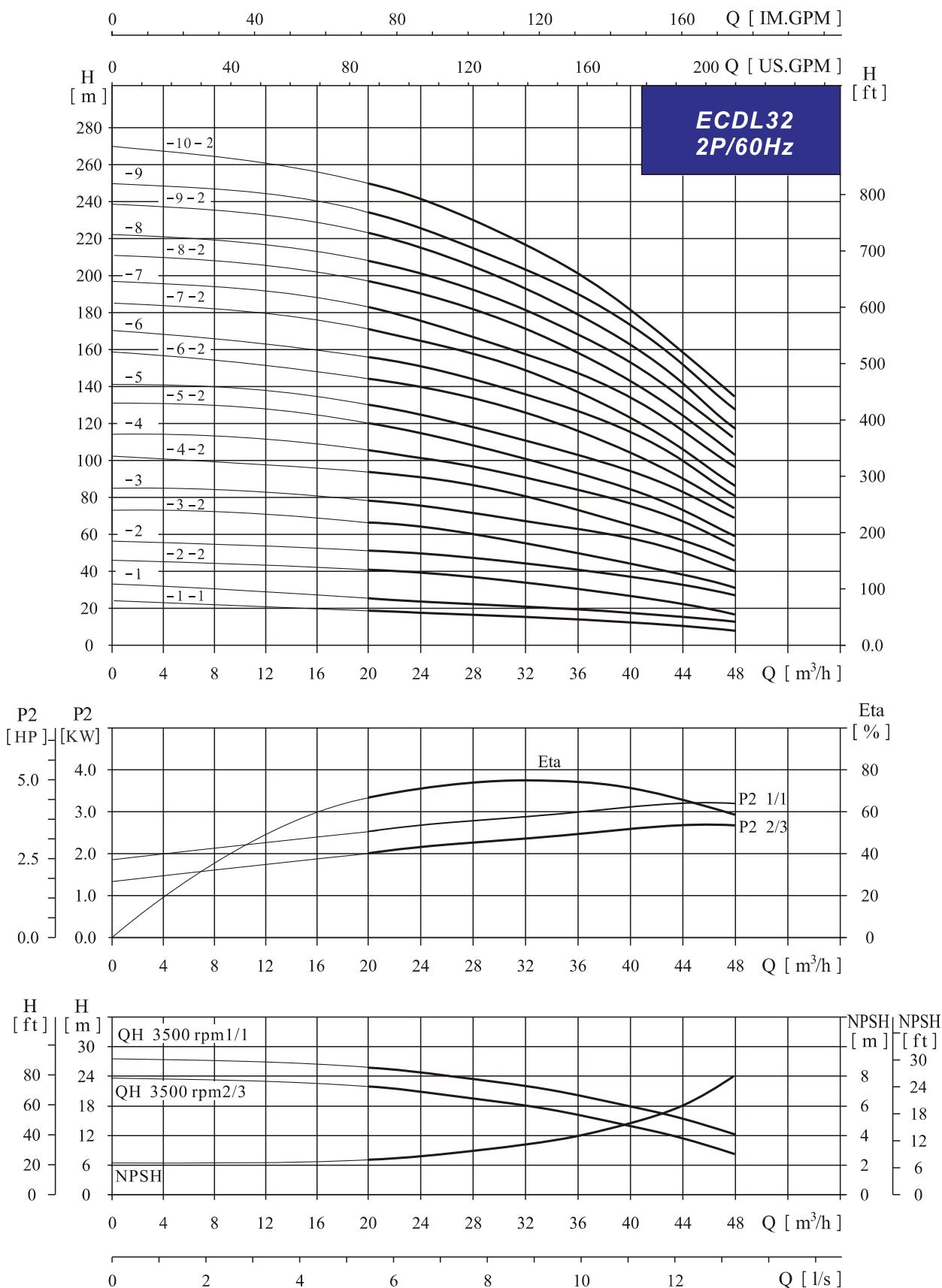
Dimensions & Weights



Model	dimension (mm)					weight (kg)
	B1	B2	B1+B2	D1	D2	
ECDLT20-1	352	290	642	190	155	41
ECDLT20-2	407	335	742	230	188	56
ECDLT20-3	472	430	902	260	208	69
ECDLT20-4	517	430	947	260	208	79
ECDLT20-5	650	490	1140	330	255	148
ECDLT20-6	695	490	1185	330	255	150
ECDLT20-7	740	490	1230	330	255	162
ECDLT20-8	785	490	1275	330	255	163
ECDLT20-10	875	550	1425	330	255	187

ECDLT32 Technical Data

Performance Curves

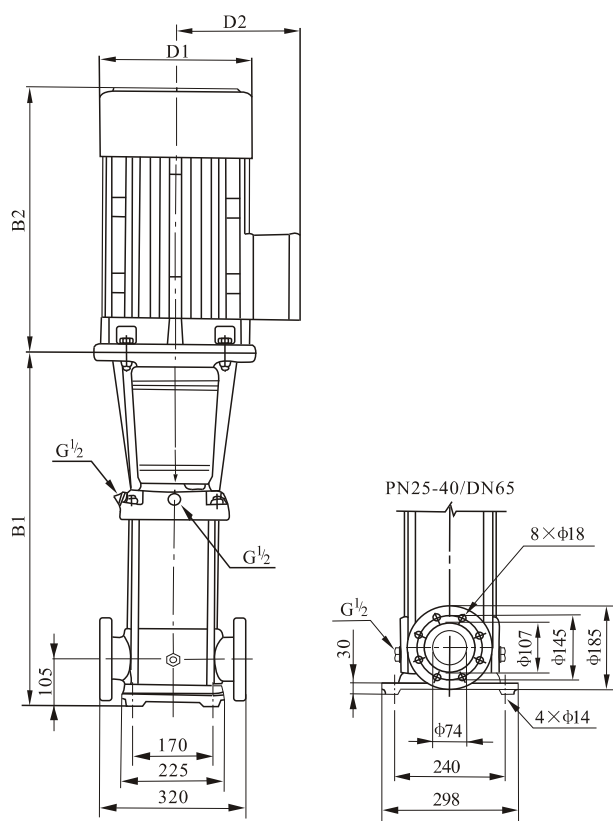


ECDLT32 Technical Data

Performance table

Model	Power		Q (m ³ /h)	20	24	28	32	36	40	44	48
	(KW)	(HP)									
ECDLT32-1-1	3.0	4.0	H (m)	20	19	18	17	15	13	10	7
ECDLT32-1	4.0	5.5		26	25	24	23	21	19	17	14
ECDLT32-2-2	5.5	7.5		41	40	38	35	31	27	22	17
ECDLT32-2	7.5	10		52	50	48	45	41	37	33	27
ECDLT32-3-2	7.5	10		67	64	61	57	52	46	39	31
ECDLT32-3	11	15		78	75	71	67	62	56	50	40
ECDLT32-4-2	11	15		94	91	87	81	73	65	56	45
ECDLT32-4	15	20		104	101	96	91	83	75	66	55
ECDLT32-5-2	15	20		119	115	109	102	94	84	73	59
ECDLT32-5	18.5	25		130	125	119	112	104	94	83	69
ECDLT32-6-2	18.5	25		145	140	134	126	116	104	90	74
ECDLT32-6	18.5	25		155	150	144	136	126	114	100	81
ECDLT32-7-2	22	30		172	166	158	149	137	123	106	86
ECDLT32-7	22	30		182	176	168	159	148	133	118	97
ECDLT32-8-2	22	30		196	190	182	172	159	143	124	102
ECDLT32-8	30	40		208	201	192	181	167	152	132	111
ECDLT32-9-2	30	40		223	216	206	194	179	162	142	117
ECDLT32-9	30	40		234	226	216	204	189	172	152	127
ECDLT32-10-2	30	40		248	241	231	217	201	181	159	133

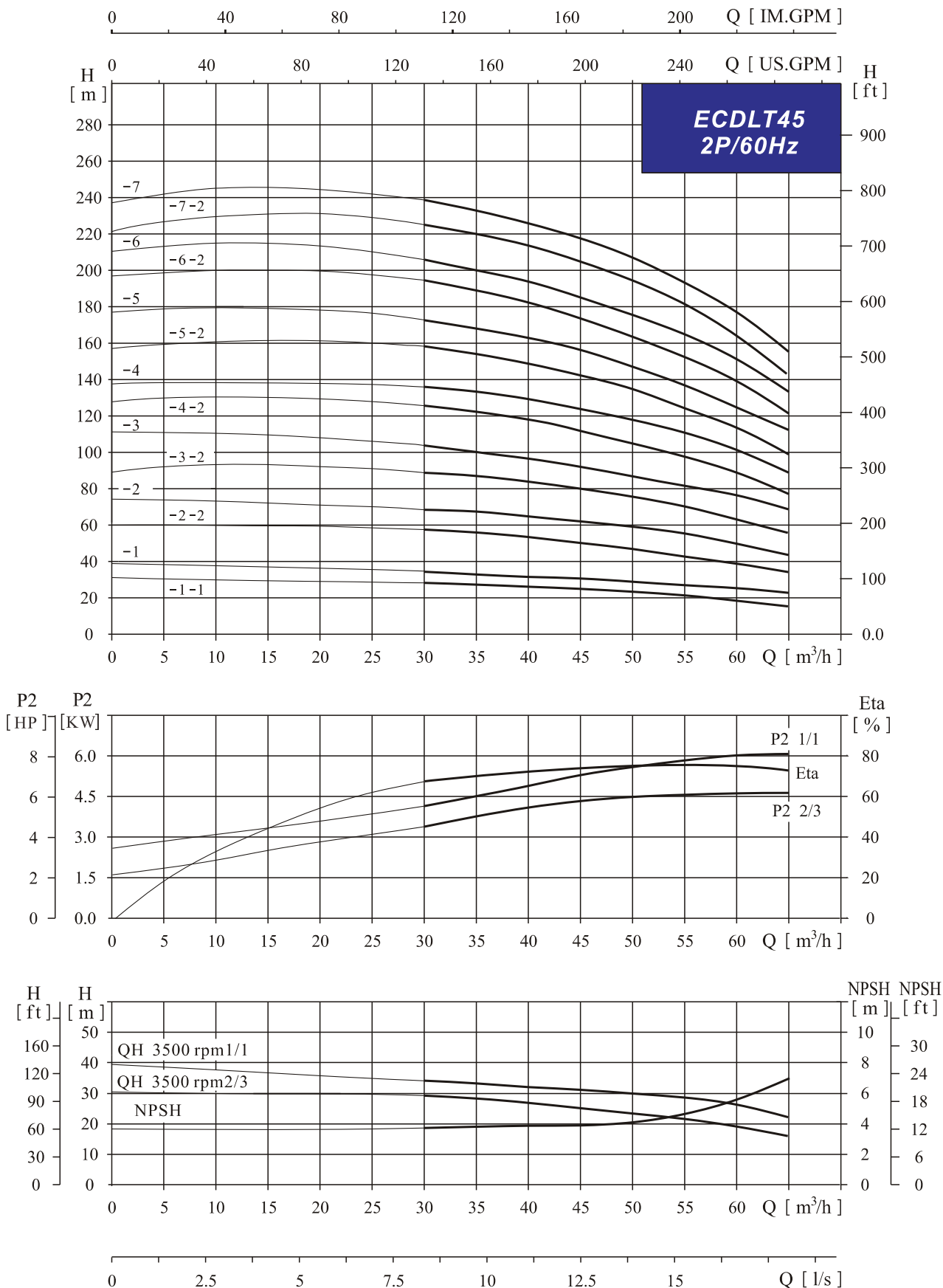
Dimensions & Weights



Model	dimension (mm)					weight (kg)
	B1	B2	B1+B2	D1	D2	
ECDLT32-1-1	505	315	820	197	165	73
ECDLT32-1	505	335	840	230	188	81
ECDLT32-2-2	575	430	1005	260	208	95
ECDLT32-2	575	430	1005	260	208	101
ECDLT32-3-2	645	490	1135	330	255	104
ECDLT32-3	750	490	1240	330	255	172
ECDLT32-4-2	820	490	1310	330	255	176
ECDLT32-4	820	490	1310	330	255	186
ECDLT32-5-2	890	490	1380	330	255	191
ECDLT32-5	890	550	1440	330	255	211
ECDLT32-6-2	960	550	1510	330	255	216
ECDLT32-6	960	550	1510	330	255	216
ECDLT32-7-2	1030	590	1620	360	285	255
ECDLT32-7	1030	590	1620	360	285	255
ECDLT32-8-2	1100	590	1690	400	310	259
ECDLT32-8	1100	660	1760	400	310	315
ECDLT32-9-2	1170	660	1830	400	310	319
ECDLT32-9	1170	660	1830	400	310	319
ECDLT32-10-2	1240	660	1900	400	310	324

ECDLT45 Technical Data

Performance Curves

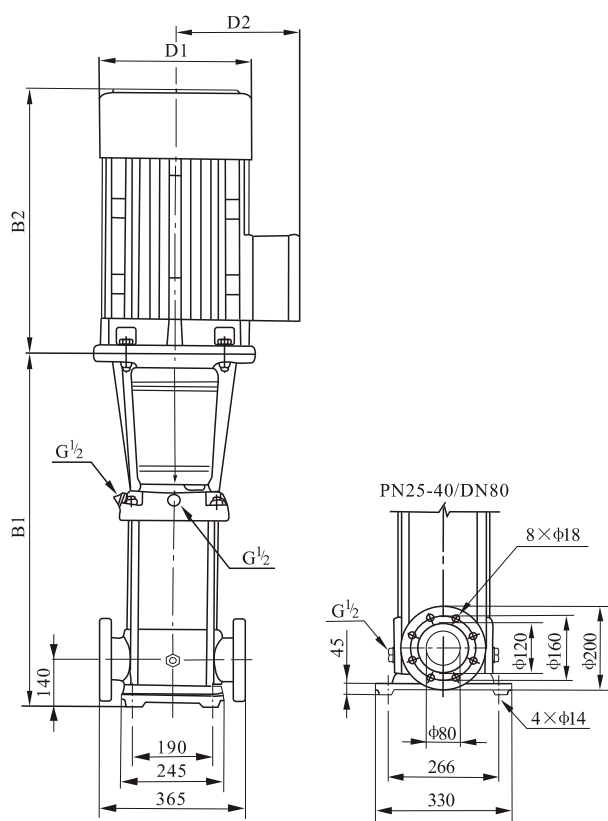


ECDLT45 Technical Data

Performance table

Model	Power		Q (m ³ /h)	30	35	40	45	50	55	60	65
	(KW)	(HP)									
ECDLT45-1-1	5.5	7.5	H (m)	29	28	27	25	23	21	19	16
ECDLT45-1	7.5	10		34	33	32	30	29	27	25	22
ECDLT45-2-2	11	15		57	55	53	49	46	43	38	33
ECDLT45-2	15	20		69	67	65	61	59	55	50	44
ECDLT45-3-2	18.5	25		90	88	85	80	75	72	63	55
ECDLT45-3	18.5	25		102	100	97	92	88	82	76	68
ECDLT45-4-2	22	30		125	121	118	112	105	98	89	78
ECDLT45-4	30	40		136	133	129	123	117	112	102	89
ECDLT45-5-2	30	40		159	154	149	142	134	121	115	99
ECDLT45-5	30	40		171	166	161	154	145	138	126	112
ECDLT45-6-2	37	50		194	188	182	173	163	155	139	122
ECDLT45-6	37	50		205	200	193	186	176	166	152	134
ECDLT45-7-2	45	60		227	220	213	205	193	182	165	144
ECDLT45-7	45	60		239	232	226	216	204	194	178	157

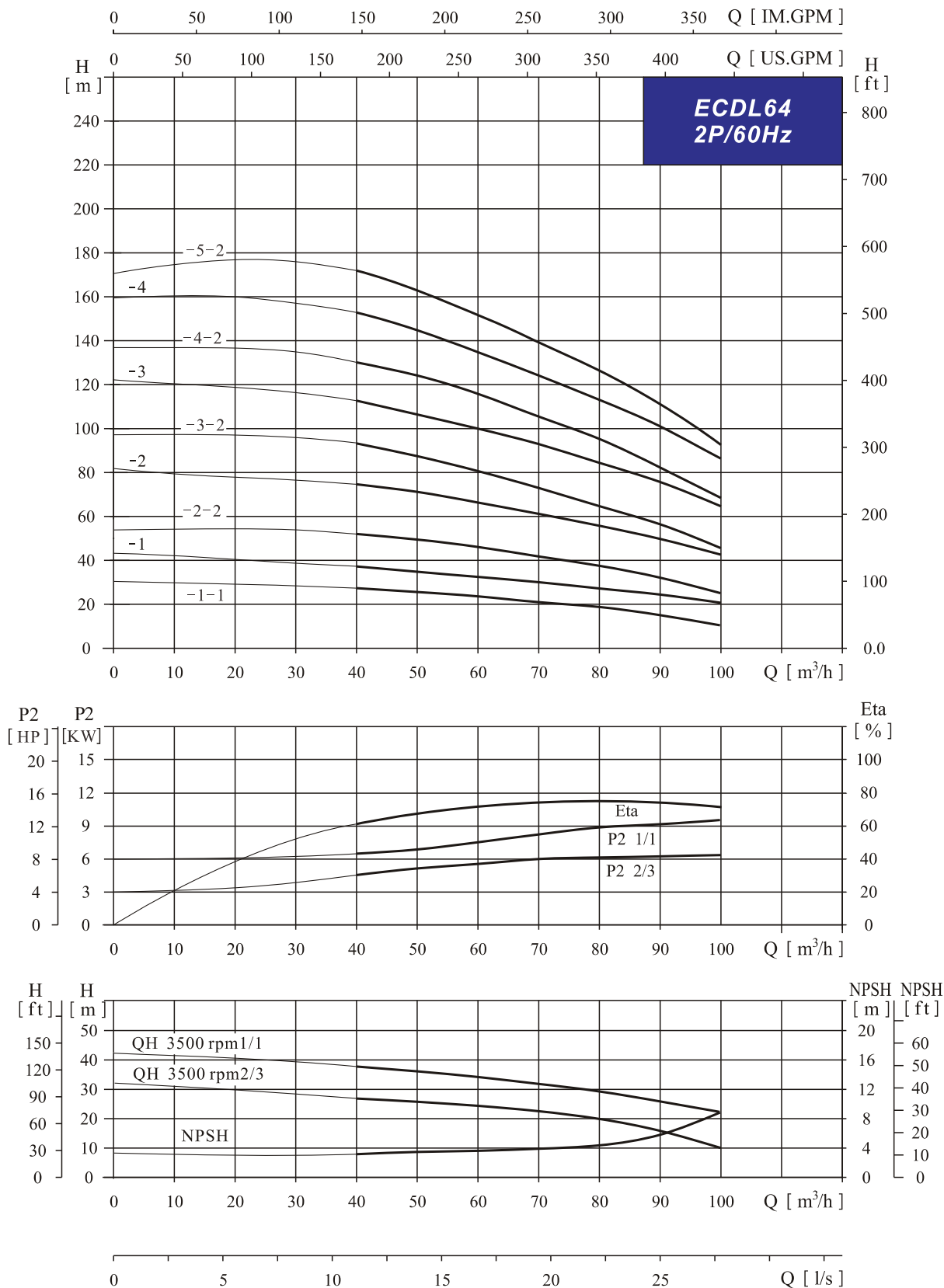
Dimensions & Weights



Model	dimension (mm)					weight (kg)
	B1	B2	B1+B2	D1	D2	
ECDLT45-1-1	561	430	992	260	208	101
ECDLT45-1	561	430	992	260	208	106
ECDLT45-2-2	748	490	1238	330	255	178
ECDLT45-2	748	490	1238	330	255	188
ECDLT45-3-2	828	550	1378	330	255	213
ECDLT45-3	828	550	1378	330	255	213
ECDLT45-4-2	908	590	1498	360	285	253
ECDLT45-4	908	660	1568	400	310	309
ECDLT45-5-2	988	660	1648	400	310	313
ECDLT45-5	988	660	1648	400	310	313
ECDLT45-6-2	1068	660	1728	400	310	340
ECDLT45-6	1068	660	1728	400	310	340
ECDLT45-7-2	1148	700	1848	460	340	404
ECDLT45-7	1148	700	1848	460	340	404

ECDLT64 Technical Data

Performance Curves

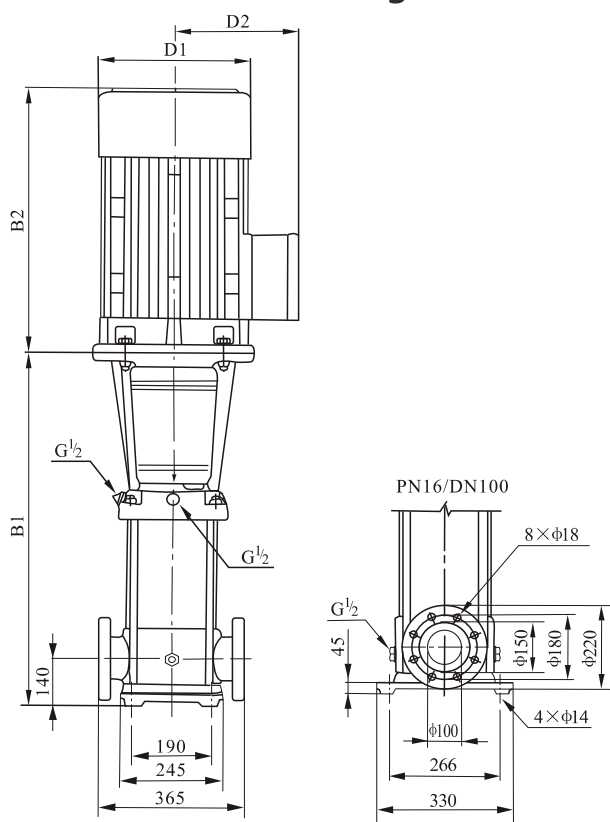


ECDLT64 Technical Data

Performance table

Model	Power		Q (m ³ /h)	40	50	60	64	70	80	90	100
	(KW)	(HP)									
ECDLT64-1-1	7.5	10	H (m)	26	25	23	22.5	21	18	14	10
ECDLT64-1	11	15		37	35	33	32.5	31	28	24	21
ECDLT64-2-2	15	20		53	50	47	44.5	42	37	31	23
ECDLT64-2	22	30		74	72	67	64.5	62	57	51	42
ECDLT64-3-2	22	30		93	88	80	76.5	72	65	56	45
ECDLT64-3	30	40		112	108	100	97	93	86	77	65
ECDLT64-4-2	37	50		130	124	115	111	103	94	83	66
ECDLT64-4	45	60		152	144	135	131	123	114	102	86
ECDLT64-5-2	45	60		172	162	151	145	137	126	112	91

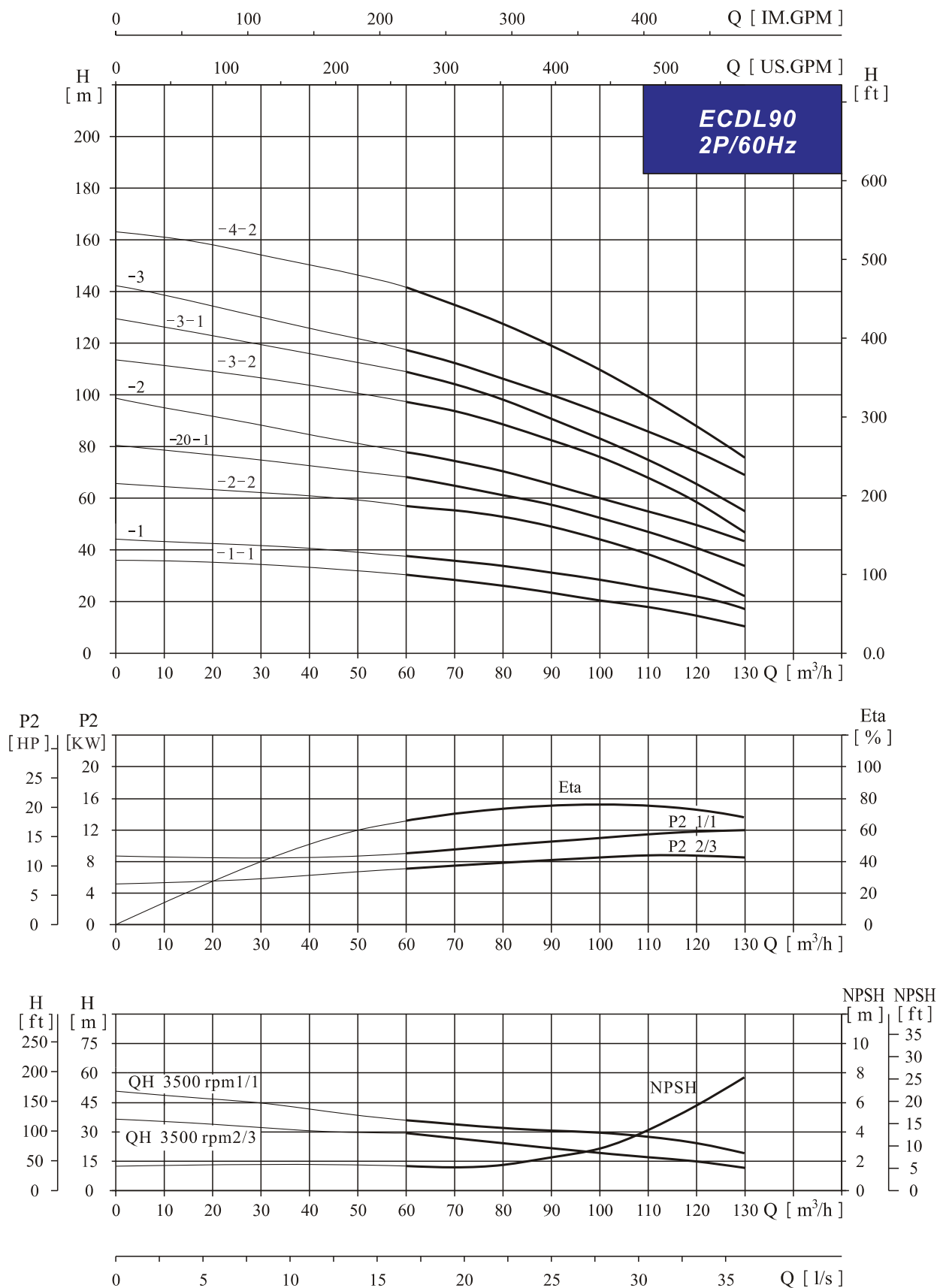
Dimensions & Weights



Model	dimension (mm)					weight (kg)
	B1	B2	B1+B2	D1	D2	
ECDLT64-1-1	561	430	991	260	208	109
ECDLT64-1	671	490	1161	330	255	177
ECDLT64-2-2	754	490	1244	330	255	187
ECDLT64-2	754	590	1344	360	285	248
ECDLT64-3-2	836	590	1426	360	285	252
ECDLT64-3	836	660	1496	400	310	313
ECDLT64-4-2	919	660	1579	400	310	336
ECDLT64-4	919	700	1619	460	340	398
ECDLT64-5-2	1001	700	1701	460	340	402

ECDLT90 Technical Data

Performance Curves

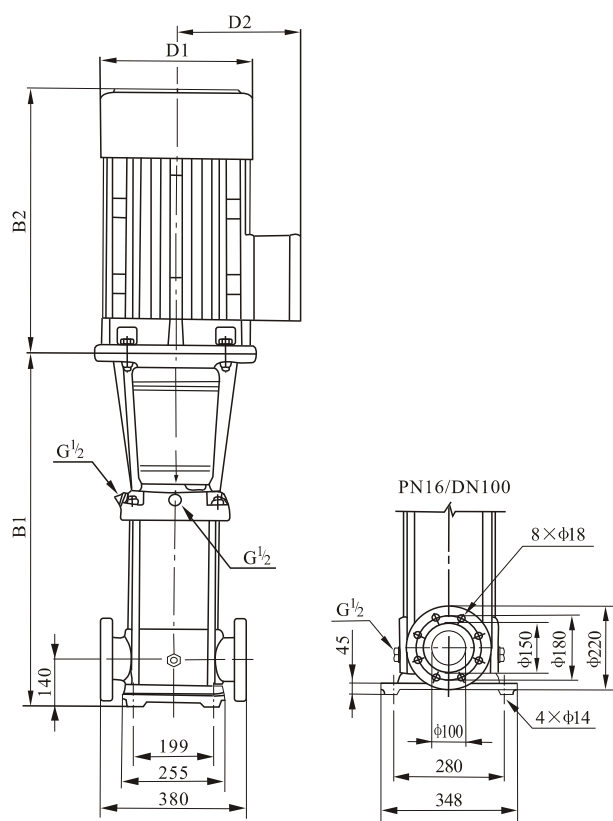


ECDLT90 Technical Data

Performance table

Model	Power		Q (m ³ /h)	60	70	80	90	100	110	120	130
	(KW)	(HP)									
ECDLT90-1-1	11	15	H (m)	31	27	25	23	21	18	14	9
ECDLT90-1	15	20		36	35	33	30	29	26	23	18
ECDLT90-2-2	18.5	25		59	57	54	48	44	39	32	22
ECDLT90-2-1	22	30		67	65	62	57	51	47	41	33
ECDLT90-2	30	40		76	73	69	64	60	56	52	44
ECDLT90-3-2	37	50		98	94	88	82	75	69	59	46
ECDLT90-3-1	37	50		108	104	98	90	83	78	69	56
ECDLT90-3	45	60		116	111	105	97	93	88	79	69
ECDLT90-4-2	45	60		141	135	128	118	109	102	89	72

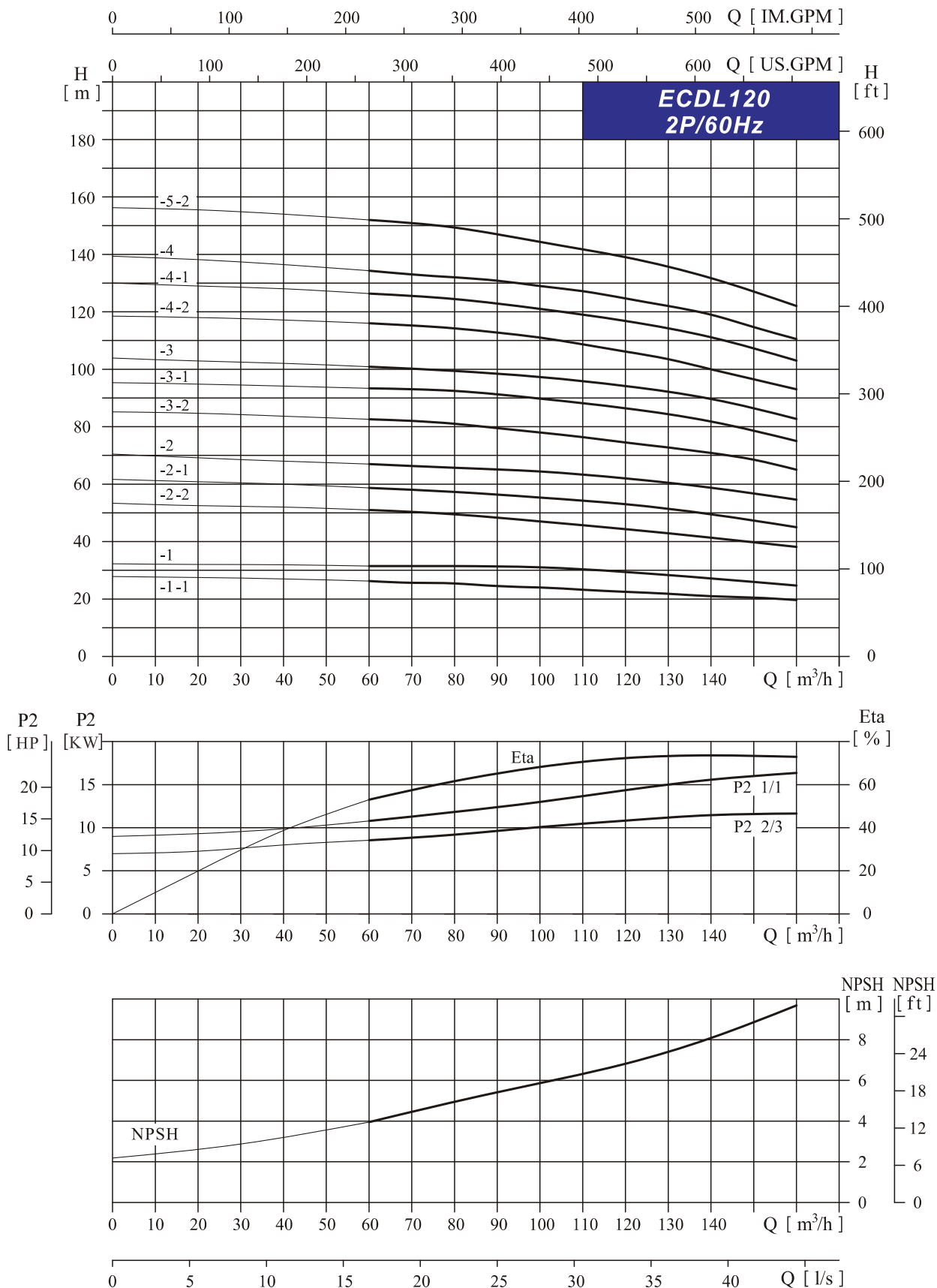
Dimensions & Weights



Model	dimension (mm)					weight (kg)
	B1	B2	B1+B2	D1	D2	
ECDLT90-1-1	571	490	1061	330	255	177
ECDLT90-1	571	490	1061	330	255	188
ECDLT90-2-2	773	550	1323	330	255	211
ECDLT90-2-1	773	590	1363	360	285	248
ECDLT90-2	773	660	1433	400	310	304
ECDLT90-3-2	865	660	1525	400	310	330
ECDLT90-3-1	865	660	1525	400	310	330
ECDLT90-3	865	700	1565	460	340	392
ECDLT90-4-2	957	700	1657	460	340	396

ECDLT120 Technical Data

Performance Curves

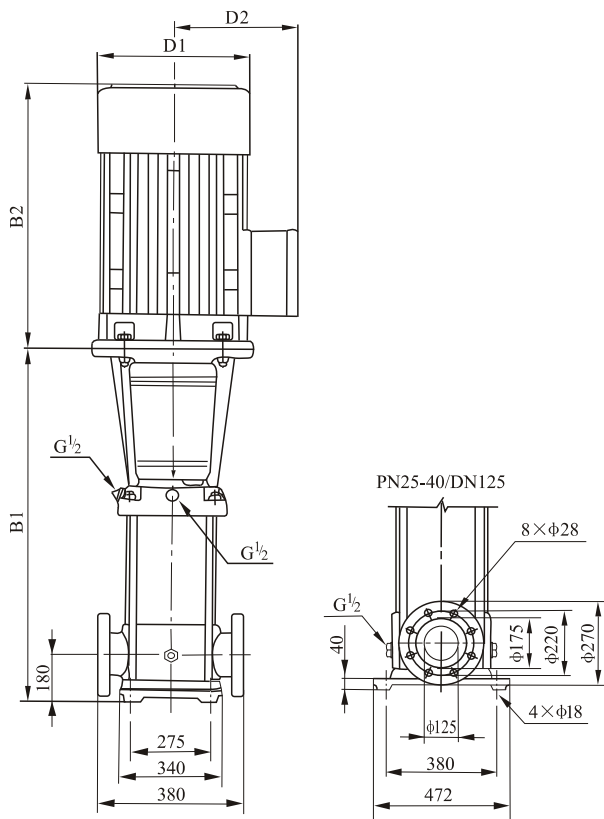


ECDLT120 Technical Data

▲ Performance table

Model	Power		Q (m ³ /h)	60	70	80	90	100	110	120	130	140	150	160
	(KW)	(HP)												
ECDLT120-1-1	15	20	H (m)	26.5	26	25	24.5	23.8	23	22.5	21.5	21.3	21	20
ECDLT120-1	18.5	25		30.8	30.7	30.7	30.5	30.3	29.5	28.8	27.6	26.4	25.4	24.4
ECDLT120-2-2	30	40		51.5	50.5	49.5	47.5	46	45.5	44.8	43	41	39.7	38.5
ECDLT120-2-1	30	40		58.3	58	57.3	56	54.7	54	53	51.5	50	47.4	45
ECDLT120-2	37	50		66.3	66	65.7	65	64.4	63	62	60.7	59.6	57	54.6
ECDLT120-3-2	45	60		83	82	81	79.5	78	76	74.5	73.5	71	68.5	65
ECDLT120-3-1	45	60		91.3	91	90.4	89	87.7	86	84.4	82	80	76.7	73.3
ECDLT120-3	55	75		100.3	100	99.4	98.3	97.3	95.5	94	92	90	86.3	82.7
ECDLT120-4-2	75	100		116	115.5	114	113	111	109	105.5	104	100	97	93
ECDLT120-4-1	75	100		126	125.4	124.6	122.6	120.6	118.5	116.5	114	111.3	107	103
ECDLT120-4	75	100		134	133	132	131	129.5	127.5	125	122	119	114.5	109.5
ECDLT120-5-2	75	100		152	151	149.7	147	144	141.5	139	135.5	132	127	122

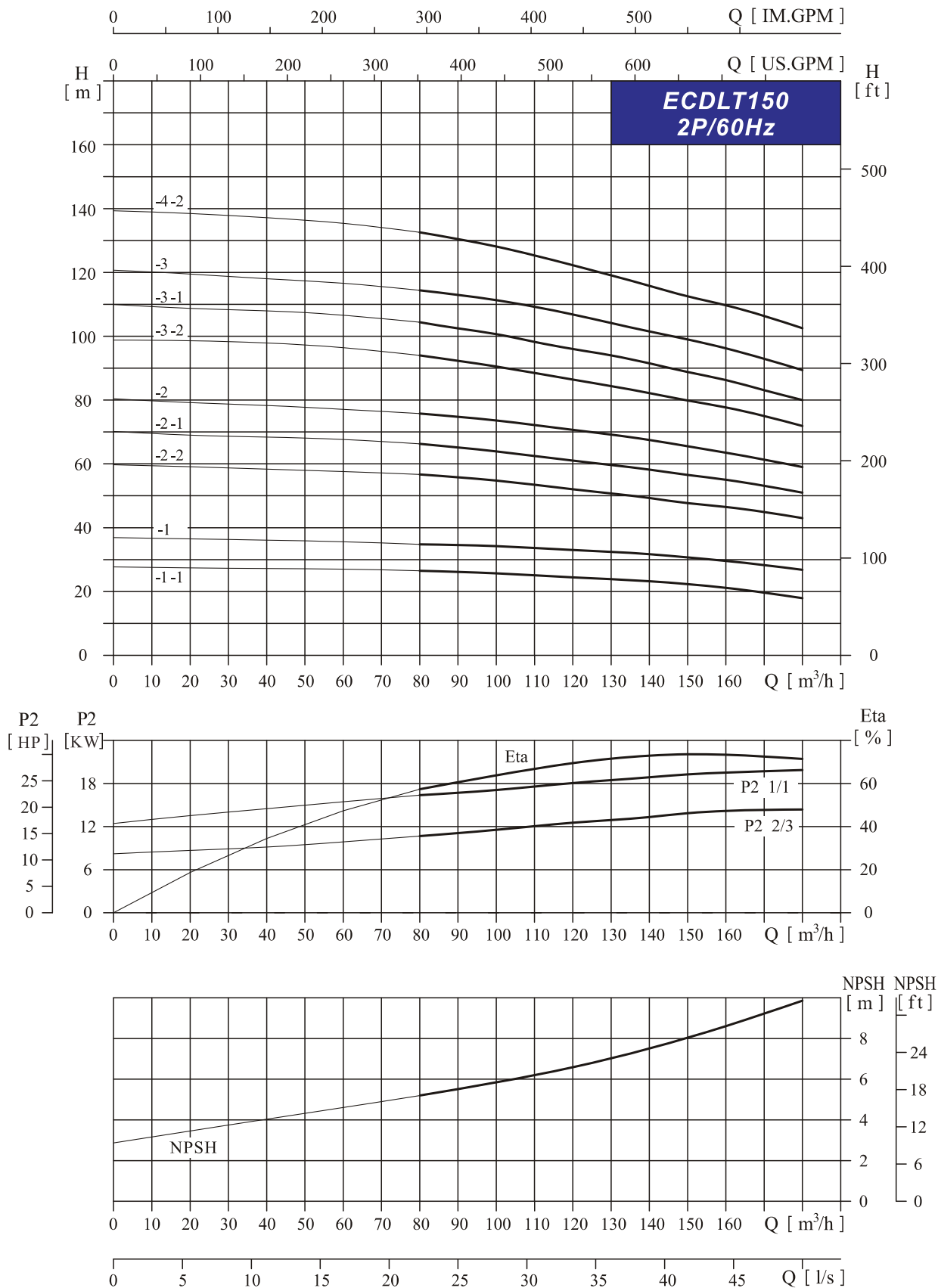
▲ Dimensions & Weights



Model	dimension (mm)					weight (kg)
	B1	B2	B1+B2	D1	D2	
ECDLT120-1-1	840	490	1330	330	255	235
ECDLT120-1	840	550	1390	330	255	250
ECDLT120-2-2	1000	660	1660	400	310	350
ECDLT120-2-1	1000	660	1660	400	310	350
ECDLT120-2	1000	660	1660	400	310	380
ECDLT120-3-2	1160	700	1860	460	340	445
ECDLT120-3-1	1160	700	1860	460	340	445
ECDLT120-3	1190	770	1960	510	370	545
ECDLT120-4-2	1350	845	2195	580	410	675
ECDLT120-4-1	1350	845	2195	580	410	675
ECDLT120-4	1350	845	2195	580	410	675
ECDLT120-5-2	1510	845	2355	580	410	690

ECDLT150 Technical Data

Performance Curves

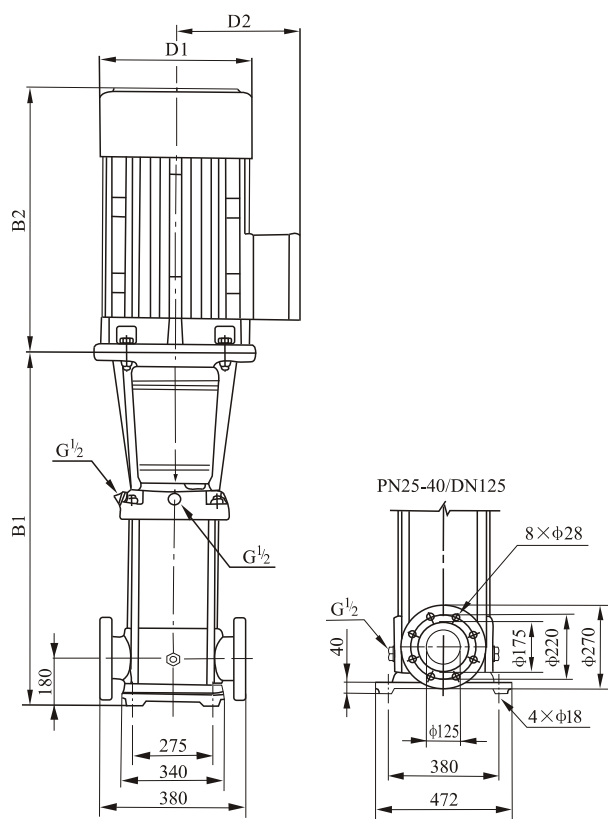


ECDLT150 Technical Data

Performance table

Model	Power		Q (m ³ /h)	80	90	100	110	120	130	140	150	160	170	180
	(KW)	(HP)												
ECDLT150-1-1	15	20	H (m)	26.5	26	25.7	25	24.3	23.8	23.2	22.3	21.2	19.5	18
ECDLT150-1	22	30		35	34.5	34	33.6	33	32.3	31.7	30.7	29.6	28	27
ECDLT150-2-2	30	40		57	55.5	53	52	51.3	50	49	48	47	45	43
ECDLT150-2-1	37	50		67	65	63.5	62	61	60	58.5	56	55	53	51
ECDLT150-2	45	60		75.5	74.5	73.6	72	70.4	69	67.5	65.5	63.5	61	59
ECDLT150-3-2	55	75		94	92	90.5	88.4	86.4	83.8	81	80	78	75.3	72.5
ECDLT150-3-1	75	100		104	102.5	100	98	96	94	92	89	87	84	80
ECDLT150-3	75	100		114.4	113	111.3	109	106.5	104	101.5	99	96	93	89.4
ECDLT150-4-2	75	100		133	130.3	127.6	124.6	121.7	118.3	115	112.5	110	106.3	102.5

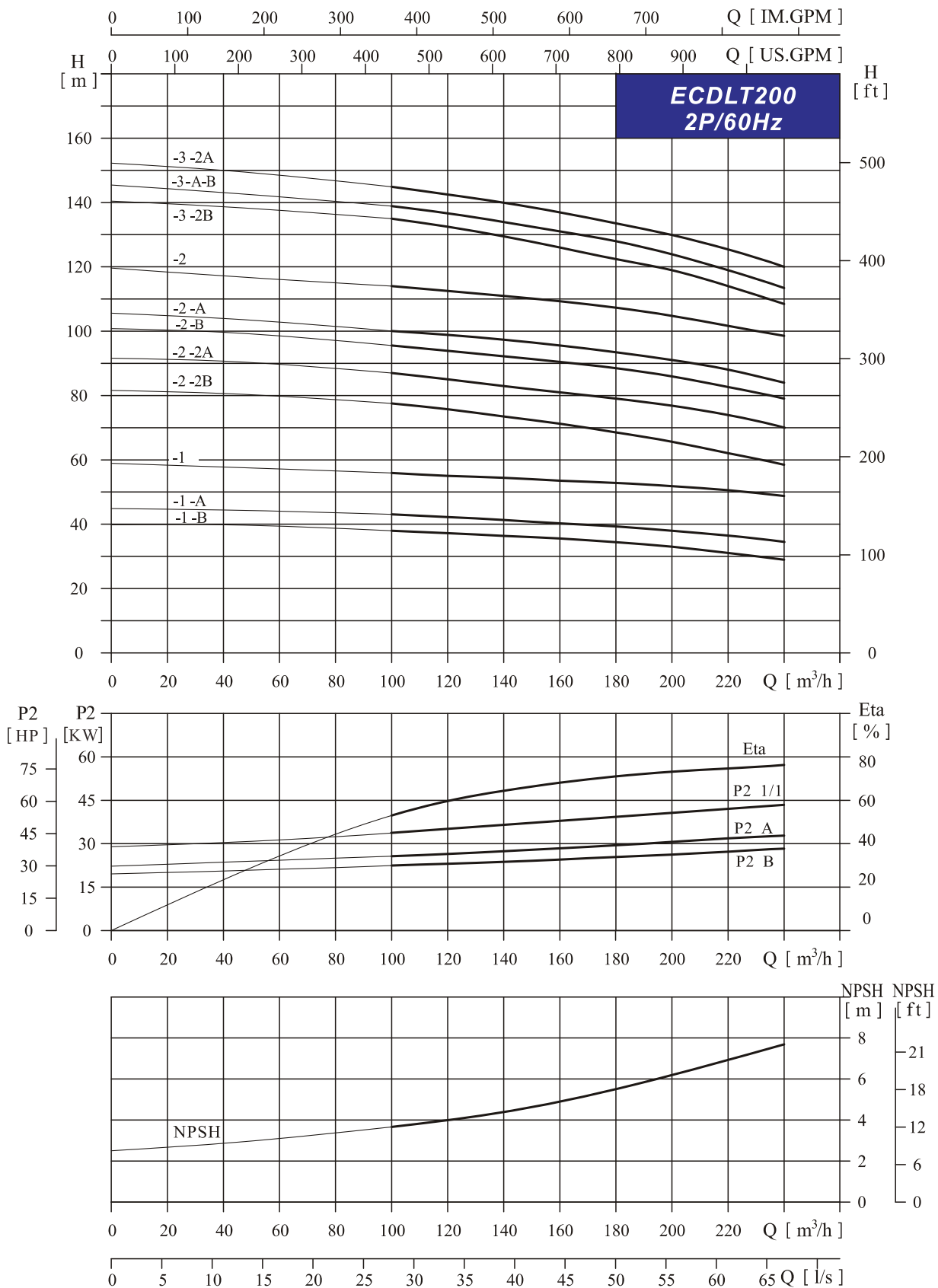
Dimensions & Weights



Model	dimension (mm)					weight (kg)
	B1	B2	B1+B2	D1	D2	
ECDLT150-1-1	840	490	1330	330	255	235
ECDLT150-1	840	590	1430	360	285	280
ECDLT150-2-2	1000	660	1660	400	310	360
ECDLT150-2-1	1000	660	1660	400	310	380
ECDLT150-2	1000	700	1700	460	340	435
ECDLT150-3-2	1190	770	1960	510	370	545
ECDLT150-3-1	1190	845	2035	580	410	665
ECDLT150-3	1190	845	2035	580	410	665
ECDLT150-4-2	1350	845	2195	580	410	680

ECDLT200 Technical Data

Performance Curves

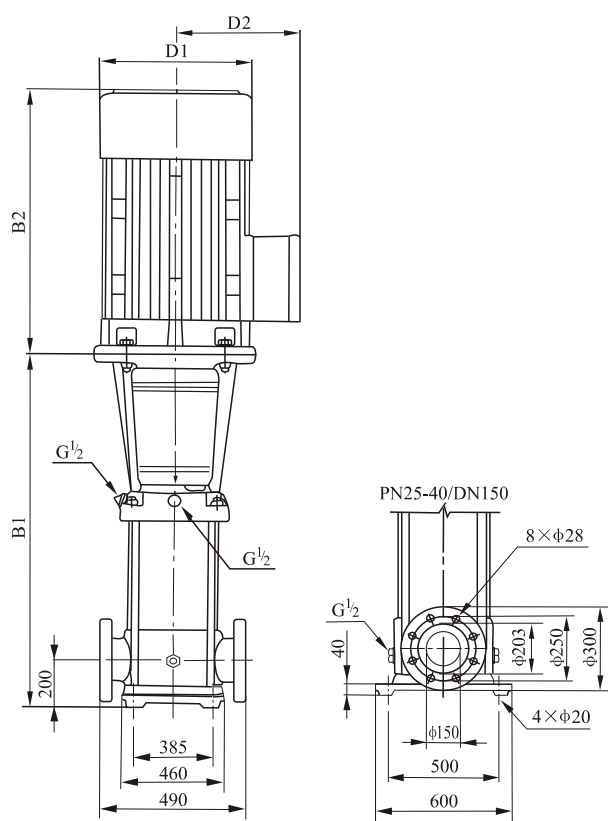


ECDLT200 Technical Data

Performance table

Model	Power		Q (m ³ /h)	100	120	140	160	180	200	220	240
	(KW)	(HP)									
ECDLT200-1-B	30	40	H (m)	38	37	36.5	35.5	34	33	31	29
ECDLT200-1-A	37	50		43	42	41.5	40	39	38	36.5	34.5
ECDLT200-1	45	60		56	55	54.5	53.5	53	52	50.5	48.5
ECDLT200-2-2B	55	75		77.5	75.5	73.5	71	68.5	66	62	58.5
ECDLT200-2-2A	75	100		87	85	83	81	79	77	74	70
ECDLT200-2-B	75	100		95.5	93.5	92.5	90.5	88.5	86	82.5	79
ECDLT200-2-A	90	120		100	98.5	97.5	95.5	93.5	91	88	84
ECDLT200-2	90	120		114	112.5	111	109.5	107.5	105	101.5	98.5
ECDLT200-3-2B	110	150		135	132.5	129.5	126	122.5	119	114	108.5
ECDLT200-3-A-B	110	150		139	136.5	134	131	128	124	119	113.5
ECDLT200-3-2A	110	150		145	142.5	140	137	133.5	130	125.5	120

Dimensions & Weights



Model	dimension (mm)					weight (kg)
	B1	B2	B1+B2	D1	D2	
ECDLT200-1-B	907	660	1567	400	310	403
ECDLT200-1-A	907	660	1567	400	310	426
ECDLT200-1	907	700	1607	450	345	484
ECDLT200-2-2B	1131	770	1901	540	370	595
ECDLT200-2-2A	1131	845	1976	580	410	718
ECDLT200-2-B	1131	845	1976	580	410	718
ECDLT200-2-A	1131	895	2026	580	410	787
ECDLT200-2	1131	895	2026	580	410	787
ECDLT200-3-2B	1325	1140	2465	645	550	1158
ECDLT200-3-A-B	1325	1140	2465	645	550	1158
ECDLT200-3-2A	1325	1140	2465	645	550	1158