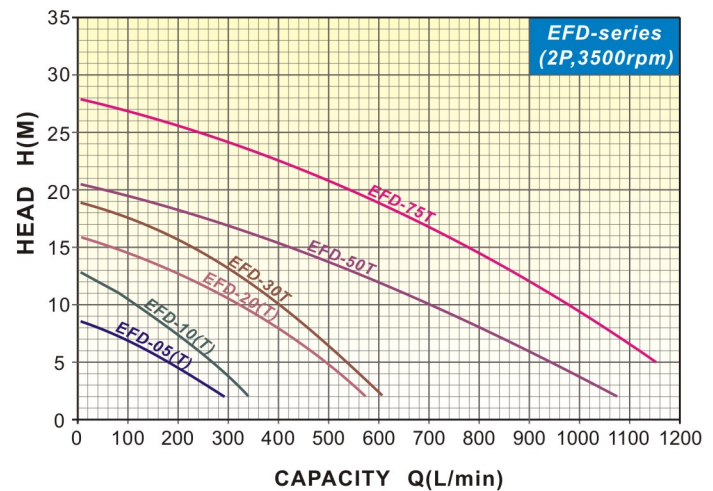




Powerful SUS316
agitator on vortex
impeller

Performance Curves



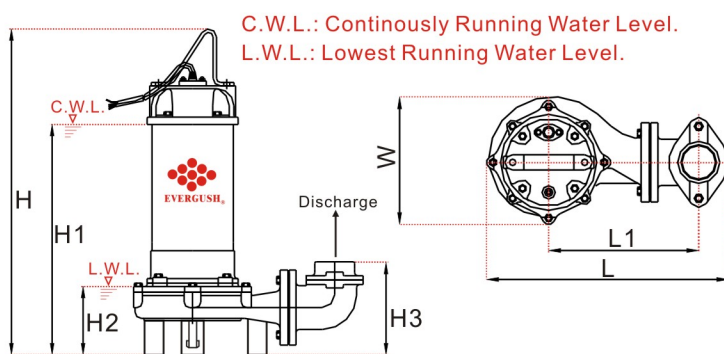
Features

- Superior abrasion resistant double mechanical seal made of silicon carbide(SIC) to ensure best seal effect and reduce abrasion from slurry.
- Equipped with stainless steel(SUS316)agitator to create powerful stirring and pumping action for slurry.

Applications

- Drainage slurry from construction site, factories..etc.
- Civil or tunnel engineering.Dewatering fluid containing solid sediment.

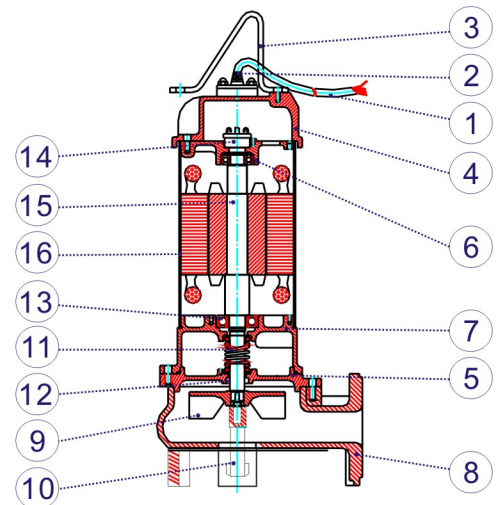
Specification & Dimension



C.W.L.: Continuously Running Water Level.
L.W.L.: Lowest Running Water Level.

NOTE: Forbid running submersible pumps continuously under L.W.L.

Parts and Material List



NO	Part	Std. Material
1	Cable	STOW
2	Cable Hood	PVC
3	Handle	Nylon6/SS400
4	Motor Cover	Nylon66/ FC200
5	Seal Housing	FC200
6	Bracket	FC200
7	Oil Chamber	FC200
8	Pump Casing	FC200

NO	Part	Std. Material
9	Impeller	FC200
10	Agitator	SUS316
11	Mech. Seal	SIC/SIC
12	Oil Seal	VITON
13	Bearing	(NTN brand)
14	Protector	(T.I.brand)
15	Shaft	SUS410
16	Motor Housing	SUS304

Model	Power		Disch.	Phase	Rated		Max.		Dimensions (mm)							Cable	Net Weight	Solid Passage
	KW	HP			Head	Capacity	Head	Cap.	L	L1	W	H	H1	H2	H3			
EFD-05(A)(T)	0.37	0.5	2"	1,3	4~5	220~180	8.5	350	222	115	145	410	297	113	133	5	13	35
EFD-10(A)(T)	0.75	1	2"	1,3	6~8	240~180	13	400	222	115	149	464	340	113	133	5	18	35
EFD-20(A)(T)	1.5	2	2"(3")	1,3	8~10	400~320	16.0	600	387	234	208	548	400	122	153	5	33	35
EFD-30T	2.2	3	2"(3")	3	10~12	400~340	19.0	680	387	234	208	568	420	122	153	5	35	35
EFD-50T	3.7	5	3"(4")	3	10~13	700~540	20.5	1150	459	256	227	638	471	160	220	5	55	50
EFD-75T	5.5	7.5	3"(4")	3	15~20	780~540	28	1300	459	256	227	678	511	160	220	5	61	50

Remarks: ● (A): Equipped with automatic float switch. ● (T): Three phase motor. ● 10M cable are available for 0.5~7.5HP models per special request.



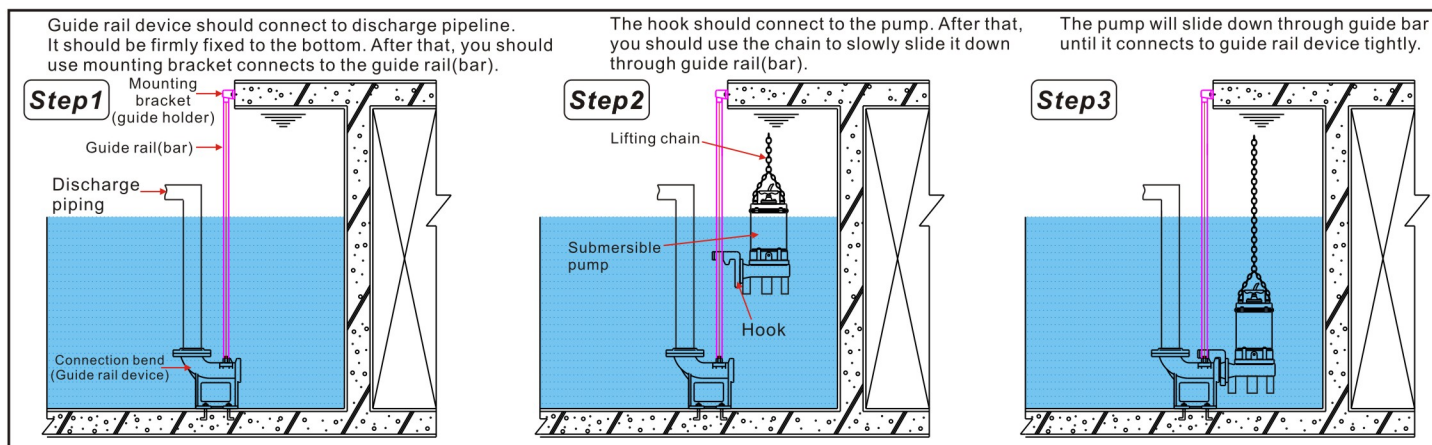
Product Features

- Through simple and convenient installation, we can connect the pump onto guide rail device. Whenever the pump needs maintenance, it can be easily pulled out through guide bar to dismantle, repair or examine the pump. For safety purpose, The workers no longer need to go down the septic tank to do maintenance. It will greatly reduce down time.

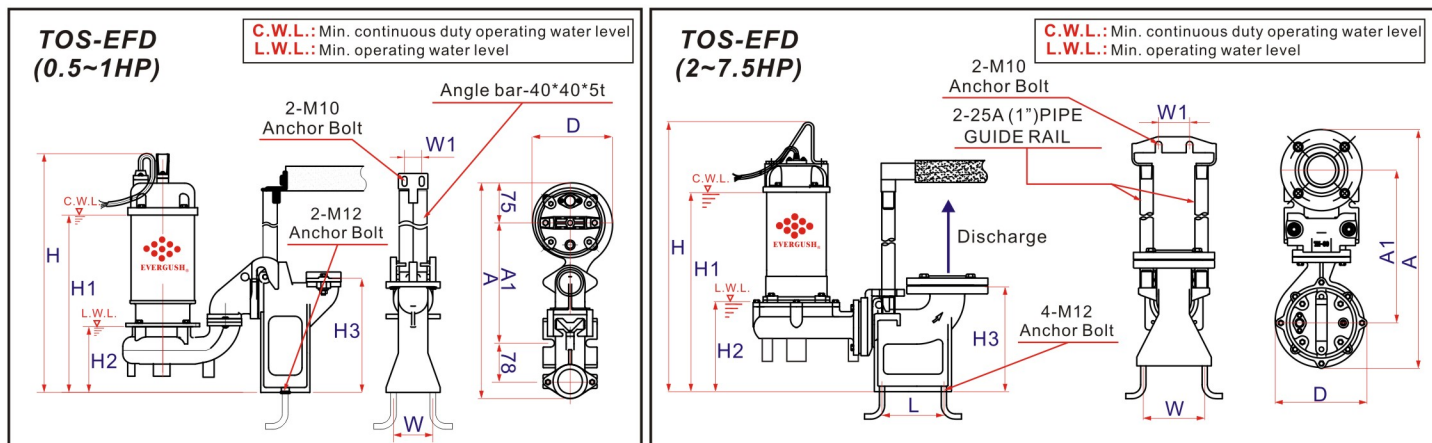
Applications

- Animal husbandry and dairying septic tank waste water drainage; sewers, apartments, buildings and basements sewage treatment equipment drainage; Dye house, fur and leather industry and steel industry waste water drainage; other waste water treatments drainage.

Installation Diagram



Dimension



Model	Power	Disch.	Dimensions(mm)										Weight(KG)	
	HP	Inch	A	A1	D	H	H1	H2	H3	L	W	W1	TOS Device	TOS & PUMP
TOS-EFD-05(T)	0.5	2"	425	240	150	422	307	150	225	---	80	35	6	19
TOS-EFD-10(T)	1	2"	425	240	150	502	377	150	225	---	80	35	6	24
TOS-EFD-20(T)	2	3"	545	350	210	650	480	210	243	110	140	70	16	49
TOS-EFD-30T	3	3"	545	350	210	670	500	210	243	110	140	70	16	51
TOS-EFD-50T	5	4"	725	515	230	745	580	270	310	160	150	70	24	79
TOS-EFD-75T	7.5	4"	725	515	230	785	620	270	310	160	150	70	24	85

Remarks: ● TOS means cast iron guide rail device. (Q.D.C:Quick Discharge Device) ● "T" means 3 phase motor.